

# WHITE STAR-DOMINION LINE

## MONTREAL TO LIVERPOOL

S.S. Canada,	Oct., 8th	S.S. Megantic,	Oct. 15th
S.S. Dominion,	Oct. 22nd	S.S. Laurentic,	Oct. 29th
		S.S. Canada,	Nov. 5th

(All above Steamers carry passengers)

Favorite steamers for all kinds of perishable cargo, having fan ventilation, cold storage and cool air chambers.

## MONTREAL TO BRISTOL

S.S. Cornishman,	Oct. 8th	S.S. Welshman,	Oct. 15th
S.S. Manxman,	Oct. 29th	S.S. Cornishman,	Nov. 12th

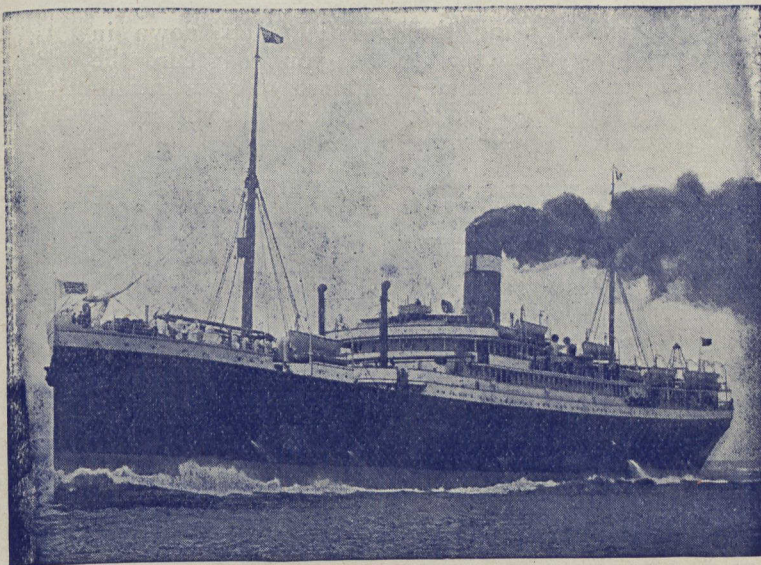
# WHITE STAR - DOMINION LINE

M. A. OVEREND }  
J. W. WILKINSON } Travelling Freight Agents

MONTREAL OFFICE, 118 Notre Dame St. W.  
PORTLAND OFFICE, - - - 1 India St.

GEORGE W. TORRANCE, Freight Agent,  
28 Wellington St. E., TORONTO

Mention the Canadian Horticulturist when writing



# ALLAN LINE

ROYAL MAIL

## WEEKLY SERVICES

VIA

The St. Lawrence Route

30-STEAMSHIPS-30  
(176,000 TONS)

The First Transatlantic Line to adopt Turbine Engines.

### SAILINGS AS UNDER:

FRIDAYS FOR . . . . .	LIVERPOOL
SATURDAYS FOR . . . . .	GLASGOW
SATURDAYS FOR . . . . .	LONDON and HAVRE

## THE ALLAN LINE

Has Spared No Expense in Equipping Cold Storage, Cool Air and Ventilated Chambers, for the carriage of Fruits, Meats, Butter, Cheese and other Perishables.

VIRGINIAN	Triple Screw	GRAMPIAN	} Twin Screw
VICTORIAN	Turbine Engines	HESPERIAN	
TUNISIAN	} Twin Screw	IONIAN	
CORSICAN			

And 23 Other Ships

Record Passage Liverpool, 6 days 15 hours, 3 minutes.  
Record Passage Glasgow, 6 days, 18 hours.

For Full Particulars apply to

The ALLAN Line, 77 Yonge St., Toronto