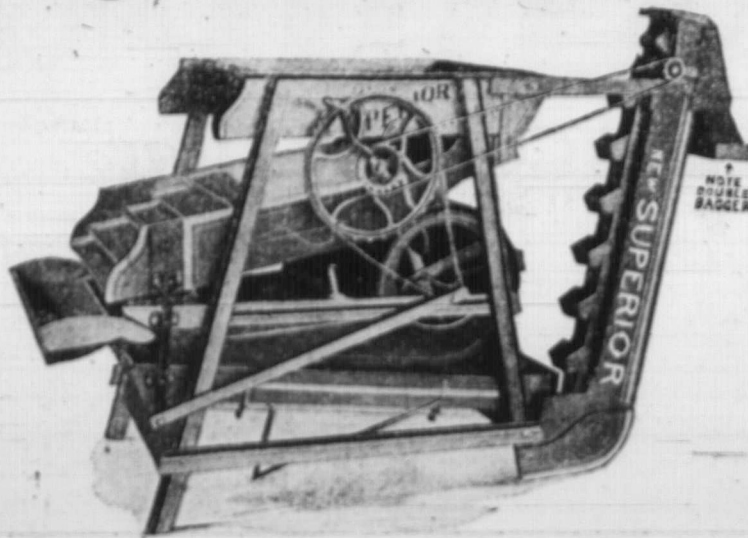


SAVE DOCKAGE, CLEAN YOUR GRAIN BEFORE MARKETING WITH
King of Wild Oat Separators



The Lincoln "NEW SUPERIOR" Wild Oat Separator

With our patented open and blank space sleeves, it positively separates every wild oat seed, causing them to lie flat, and not up on end

It is **STRONG, WELL BUILT AND BOLTED—NOT NAILED**

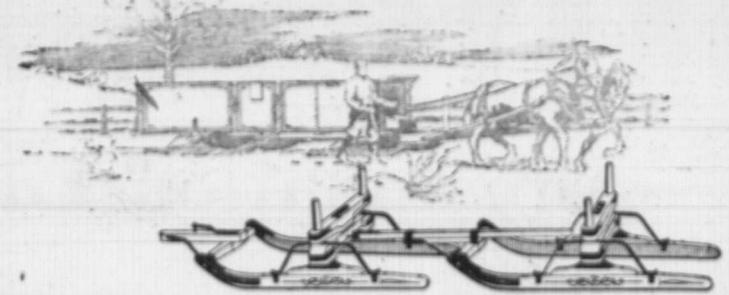
Our machine is built to clean any kind of grain and do perfect work. What the "NEW SUPERIOR" cannot do, no other can do. Exceptionally easy to operate, it will appeal to your customers.

Made in sizes, 24, 32 and 42 inches wide, with or without bagger, and with power attachment for gasoline engine if desired.

Cushman Motor Works of Canada, Limited

Builders of light weight, high grade Gasoline Engines for all farm power work
284 PRINCESS STREET WINNIPEG, MAN.

EXCLUSIVE SELLING AGENTS FOR
Fanning Mills—Soot and Pickling Machines—Vacuum Washing Machines—Lincoln Grinders—Lincoln
Saws—Lumber—Universal Holes—Langdon Ideal Self Feeders—Portable Grain Elevators—Wagon
Hardware Specialties—Mountaineer and Little Giant Neck Yoke Centre—Combination Threshing Outfits



Winter Hauling Made Easy

FOR the use of our customers whose hauling cannot be stopped by the snows of winter, or to whom the snows are welcome, as furnishing a smooth hard road over which to move their products, we offer a line of bob sleighs so complete that each man may find in it the kind of sleigh he needs and uses.

Unless a sleigh will stand hard knocks, it is of little value in Canada. Therefore, we make these sleighs, above all else, strong. Even the lightest one-horse sleighs are as strong as selected pieces of high-grade wood and steel and the most careful workmanship can make them. No imperfect or unsound material finds its way into the manufacture of these goods.

Each sleigh we sell is guaranteed, with fair usage, to carry its load over ordinary roads and to do the work intended for its size. We make a liberal guarantee arrangement to take care of the satisfaction of our customers.

See our line before you buy. It is handled by I H C local agent who will show you how big a line it is. Or, if you cannot conveniently see the agent, drop a line to the nearest branch house and we will send full information.

International Harvester Company of Canada, Ltd.

BRANCH HOUSES

At Brandon, Calgary, Edmonton, Estevan, Hamilton, Lethbridge, London, Montreal, N. Battleford, Ottawa, Quebec, Regina, Saskatoon, St. John, Winnipeg, Yorkton



If you do not see what you want advertised in this issue, write us and we will put you in touch with the makers

LOUDEN BARN EQUIPMENT

FOR QUALITY

FOR SERVICE

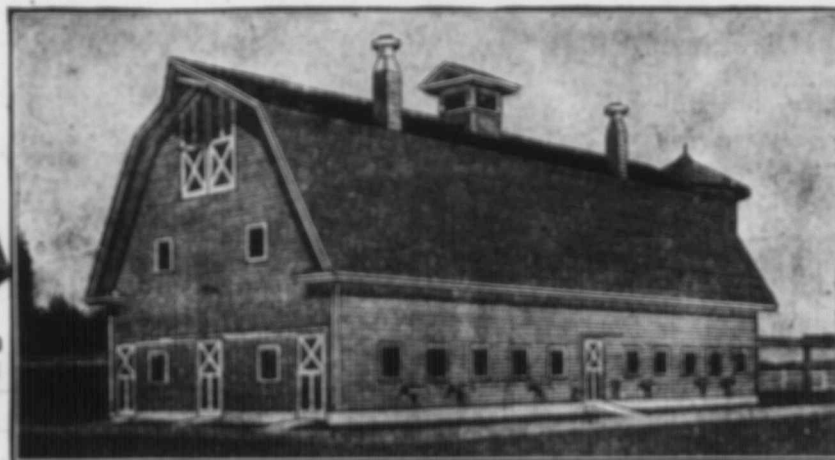
FOR SECURITY



Book of Barn Plans Free

Louden "Barn Plans" is not a catalogue of barn equipment. It is a complete and valuable book of reference and instruction on barn construction. The 112 pages of Louden Barn plans is full of dollar saving information—the best of ideas gathered by the Louden Company during many years of barn building, and barn equipment experience. 51 representative designs for cow barns, horse barns, general purpose barns and hog houses. In addition, there are 32 pages devoted to general construction problems, such as concrete work, laying floors, roof construction, ventilation, etc.

FILL OUT AND MAIL US THE COUPON FOR THIS FREE BOOK.



Louden equipment makes possible a clean, sanitary barn with a minimum of expense for upkeep. When cows are transferred from dark, dirty barns to Louden barns, the milk flow often increases from 15 to 25 per cent, and the labour of caring for the herd is reduced from one-third to one-half.

The cost of installing Louden equipment is surprisingly small, and is just as great an economy for the man with a half dozen animals as for a man with a hundred. The percentage of labour saved is the same.

The Louden Line includes:

- Hay Carriers,
- Feed Carriers,
- Horse Stalls,
- Cow Pens,
- Hay Carriers,
- Cow Stalls,
- Water Basins,
- Bull Pens,
- Hog Pens,
- Barn Door Hangers.

Catalogues Free

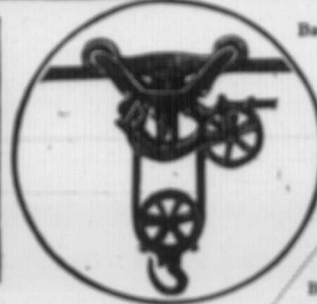
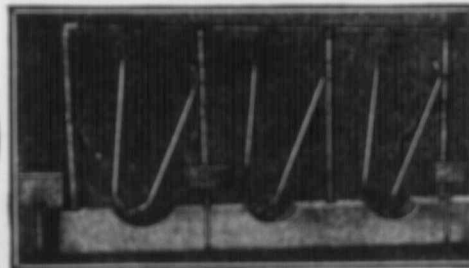
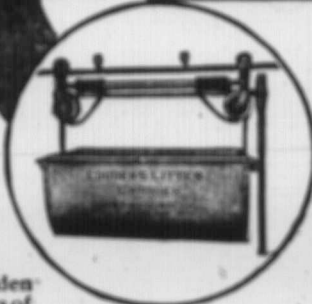
Please send me copy of Louden Barn Plans, I expect to build (or remodel) barn for

_____ cows and _____ horses. Barn will be about _____ x _____ ft.

Name _____

P.O. _____

Prov. _____



Louden Machinery Co. of Canada, Ltd.

11 CRIMEA ST., GUELPH, ONT.

VANCOUVER, B.C. WINNIPEG, MAN. ST. JOHN, N.B.