

CHATEAU FRONTENAC, QUEBEC.

Canadian Pacific Railway Hotel System

Canadian Pacific Hotels from the Atlantic Ocean to the Pacific set the standard for hotel accommodation in Canada. Each hotel is distinctive in appointment and style; each has the same superb Canadian Pacific service

THE CHATEAU FRONTENAC, Quebec, is a famous hotel in the most characteristic city of North America. Standing on Dufferin Terrace, it commands magnificent views of the River St. Lawrence.

THE ROYAL ALEXANDRA, Winnipeg, so well known and so popular with travellers that it has been enlarged to twice its original size.

THE PLACE VIGER, Montreal, is an ideal hotel for those who prefer quietness and yet wish to be within easy reach of the business centre.

THE PALLISER, Calgary, a handsome new hotel of metropolitan standard, from the roof of which the snow-capped Canadian Pacific Rockies are visible.

THE HOTEL VANCOUVER, a spacious hostelry that overlooks the Straits of Georgia and contains 650 rooms.

THE EMPRESS, Victoria, a luxurious hotel that appeals to the artistic sense, in a city of picturesque homes and Old Country atmosphere.

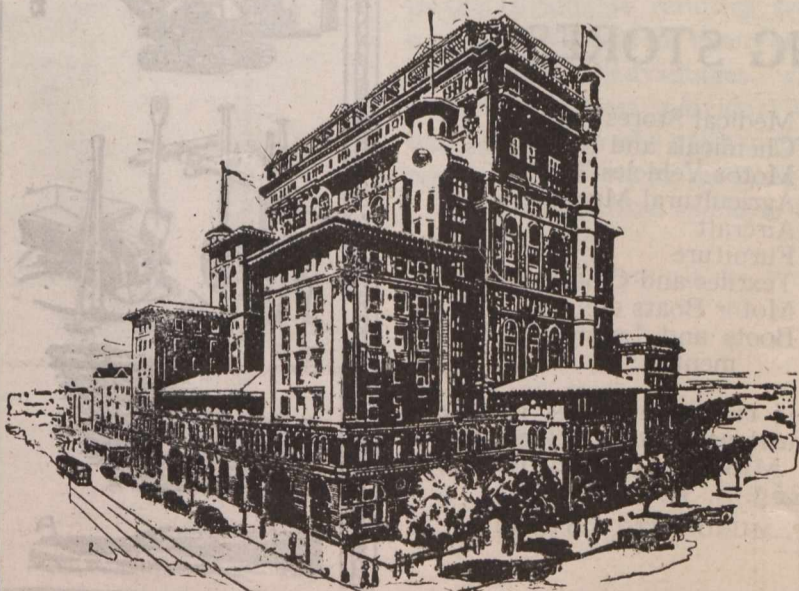
The above hotels, and others similarly situated at strategic points on the main transcontinental line of the Canadian Pacific Railway at McAdam, N.B., Sicamous, B.C., and Penticton, B.C., are open all the year round. Six other hotels, including four in the wonderful Canadian Pacific Rockies, are open in summer only.

Any C.P.R. Passenger Agent will furnish particulars, or write

C. E. E. USSHER,
Passenger Traffic Manager

F. L. HUTCHINSON,
Manager-In-Chief Hotel Dept.

CANADIAN PACIFIC RAILWAY, MONTREAL



HOTEL VANCOUVER, VANCOUVER.

The Province of Quebec

Canada's Largest Province

Area—over 700,000 square miles, or
18 per cent of all Canada

Rich in Natural Resources, Soil, Timber, Fisheries, Mines. Waterpower estimated at 6,000,000 h.p. of which 875,000 are developed at the present time.

Rich in Fish and Game and the best of sport for hunter, and sportsman.

A Land of Great Waterways, of mighty Rivers and Lakes, of extensive Forests.

A Land where Farming and Dairying is profitably pursued, with an annual production value exceeding \$200,000,000.

A Province that leads all the provinces in the Pulpwood and Asbestos Industries.

A Province that offers exceptionally favorable terms to the settler.

Send for Booklets and Information to

The Department of Lands and Forests

Quebec City, - Quebec