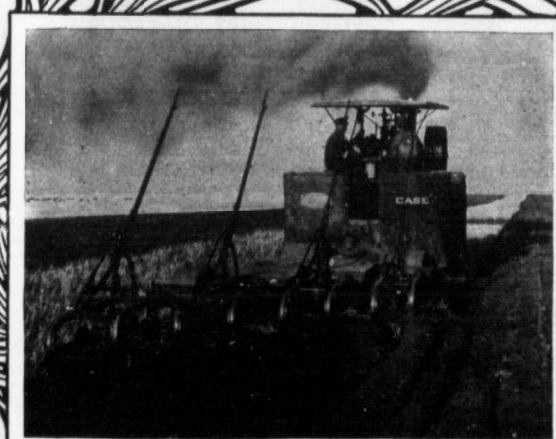
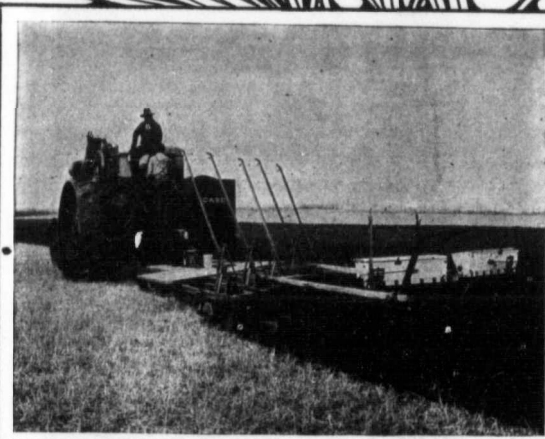


PROFESSOR OF CIVIL ENGINEERING PLOWING ENGINE - PRONOUNCES



**J.I. CASE THRESHING
· RACINE**

ENGINEERING EXAMINES THE "CASE" IT THE BEST AND BUYS ONE

HOMER M. DERR, A. M., PH. D.
Professor of Civil Engineering
South Dakota State College

Assoc. Member American Society of Civil Engineers.

BROOKINGS, S. D.
April, 4th, 1910.

J. I. Case Threshing Machine Co.,
Watertown, S. D.

Gentlemen:-

Being somewhat interested in modern farming and in breaking prairie sod. with power in particular, I have for some time been investigating the various makes of steam and gasoline engines designed for that purpose. In some respects a gasoline engine is like a balky horse. They will work very well under favorable conditions if properly handled, but if very much overloaded will refuse to work for anybody. Therein is the special advantage of steam; it will always work and will not shirk from a very heavy overload. I have observed that nearly all the manufacturers of steam engines for this work are putting upon the market a gasoline outfit to meet the crying demand for it by those who wish to buy an experiment; on the other hand, I have noticed that the manufacturer of the two always prefers to sell his customer the steam outfit, for he well knows that it will give the best satisfaction and render the most service for the money invested.

I have made a great many measurements and comparisons of plowing engines, and have no hesitancy in saying that I believe the Case 110 H. P. Plowing Engine for 1910 is the best proportioned, most admirably designed for converting a maximum amount of energy into pull at the draw-bar of anything I have yet seen. I have just given my order for one of the engines.

I am,

Very truly yours,

Homer M. Derr.



**MACHINE CO. INCORPORATED
WIS · U · S · A ·**

Chicago
ENG & CO.

TORONTO, WINNIPEG, REGINA, CALGARY