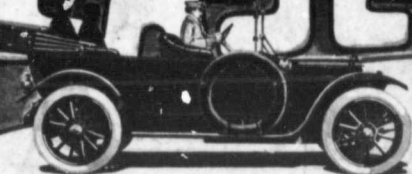


THE CAR WITH THE FAMOUS ENGINE

THE CASE CAR



Good News Travels Fast

An old saying but a mighty true one of the Case Cars. The Automobile Buying Public was quick to learn that the Old Reliable Case Policy of construction was in every Case Car. Owners of Case Cars received such genuine satisfaction and pleasure that they could not resist telling their friends about it.

Everybody Who Heard, Wanted a Case Car

This resulted to selling the out-put of our factory long before the Cars were completed. Every Case Car sold made new friends through its reliable performances under all conditions—it made the best traveling salesman for the Case Company.

The Sales Of Case Cars Are Phenomenal

Very very few automobiles have made such rapid strides or have given such universal satisfaction to their owners. The closer you examine the Case Car, the more thoroughly you will be convinced that its purchase means to you the greatest value. When looking it over, study every feature, be as critical as you can, the more you know about automobiles, the more you will be convinced of the safety of the Case Car as an investment.

Let Us Take You For a Ride

In this powerful, roomy and luxurious car—you can select your own roads. The rougher the way the better we can demonstrate to you the wonderful riding qualities of the Case Car.

Remember This, In The Case Car

you have the acme of modern automobile construction with abundance of power—style—convenience—durability coupled with Case Service—sixty-five branch houses and eleven thousand local dealers in the United States, Canada, Mexico, South America and Europe.

The Case 1913 Models range in price from \$1500 for the Thirty Horse Power, Two-passenger Roadster and Five-passenger Touring, to \$2200 for the "Case Forty," Five-passenger; \$2400 The "Case Forty," Seven-passenger Touring—Electric Lighted with Electric Self-Starter and all of the Luxurious Appointments of Cars a great deal more expensive. All prices F. O. B. factory.

Ask us to send you our latest catalog describing all Case Models.
You'll find it interesting, instructive and money-saving



J. I. CASE T. M. COMPANY.

INCORPORATED

741-791 State St. RACINE, Wis., U.S.A.

CANADIAN BRANCHES, TORONTO, WINNIPEG, SASKATOON, REGINA & CALGARY

