

Pickford is not Cleopatra

By Tracy Teeple

Dear Sir: Settle an argument for us, will you? Who played the famous

Egyptian beauty, Cleopatra, in the original film version? My friend says it was Mary Pickford. I say it

was Elizabeth Taylor. Who's right? **Stubborn**

Dear **Stubborn**: Neither of you. It was Pharoah Fawcett-Majors.

Dear **Mr. Steeple**: I am a newly-wed bride of twenty-one. Eight months ago I met the man who is now my husband. At the time he seemed to be warm, humorous, gentle, compassionate, and incredibly sexy. Five weeks ago we "walked the golden aisle", and I now find that the man I love is a phoney.

The true Fred has revealed himself to be a cold, taciturn, brutish, ill-mannered drunk who hates dogs, children, and my cooking. His hero is W.C. Fields, to boot! I don't know what to do about this situation, as both Fred and I are Catholic.

What would you recommend?
Wet Kleenex In Phoenix

Dear **Kleenex**: That's 'TEEPLE'! Obviously, you can't go on like this. It is very difficult to alter one's personality. Once certain character traits become ingrained in an in-

Advice to the Anonymous



dividual, it is next to impossible to alter them. But you'll have to try.

Therefore, I recommend very highly the current bestseller, *How To Become Cold, Taciturn, Brutish, And Ill-Mannered Without Really Trying*. That's the first step toward compatibility with your husband. To become a drunk, try drinking ten or twelve ounces of good Canadian whisky before and after supper.

With a little effort, you can learn to hate dogs and children, and W.C. Fields will grow on you after a while. Take a cooling course at night school.

Your marriage can be saved. You'll just have to work at it, that's all. Before long, you and your husband will be compatible again! Good luck.

Dear **Mr. Teeple**: I's in da employment of da Broken Nose Collection Agency. Dere's dis guy,

see, on your campus, what owes da bookstore some money, right? Okay, so here's da question - we wants ta go easy on dis guy da first time, ya know, but kinda make a example outa da jerk, too, ya unnerstand . . . so what method do ya tink is best in dis here circumstance, so as ta speak?

Do ya tink maybe da broken kneecaps wit da baseball bat? Or maybe da cigar ashes on da funny bone? (Don't say da horse's head in da bed . . . dem horses' heads ain't cheap, ya know . . . ya gotta buy da entire horse wid it, ya know . . .)

Eh? What do ya tink is da best way ta get da point across? Eh?

Da Crunch.

Dear **Mr. Crunch, Sir**: This is a fine, well written letter, sir, and I just want to say keep up the fine work for the Agency, and your money is in the mail, and I'm sorry for the delay, sir, very sorry. Sir. Sorry.

(Mr. Teeple will be happy to solve all your woes if you write him at this address:

"Advice To The Anonymous"
c/o Excalibur,
Room 111,
Central Square.)

CYSF

A student service

A column submitted by members of CYSF (Council of the York Student Federation). Views expressed are those of CYSF and/or individual members.

To begin with, the Council of The York Student Federation has put motions in the meeting of October 31, 1977 of the introduction of two clubs. The two clubs are the York Hellenic Student Association and the York Red and White Society.

The Hellenic Association is a group of people who constitute a common basis for the development of democratic principles and ideas, in unison with other organizations, along with the common Greek heritage of club members.

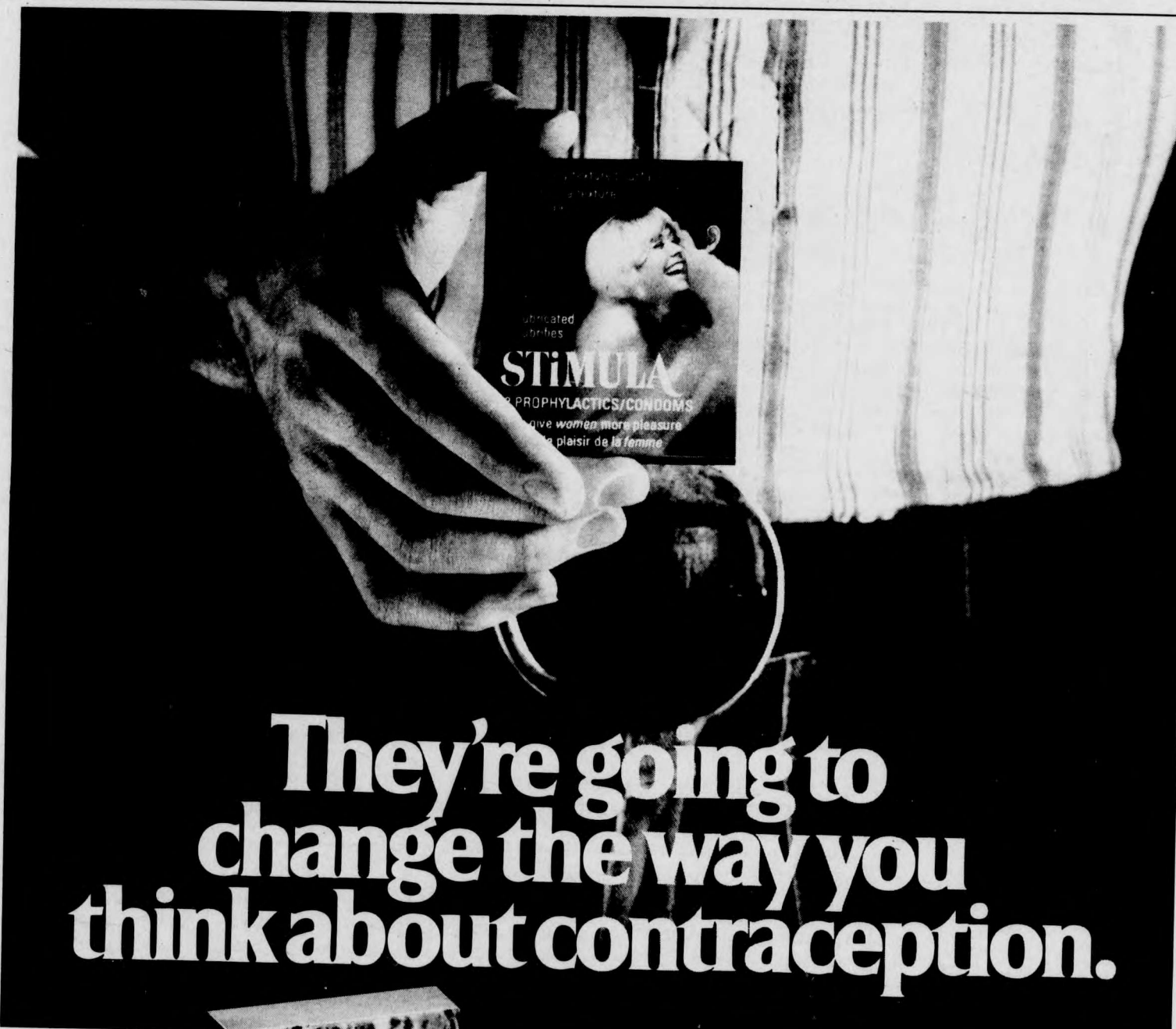
In regards with the Red and White Society, the interests of the York Students as a whole are the prime objective of the Society. Such objectives are the formation of the Red and White Band that serves as a musical brand of support towards the various varsity events.

Along with the Band, the true backbone of the Society is the student body and their vocal support of varsity athletics, for example the York Yeomen Hockey Team. This organization is for the support of the university as a whole, and any individuals interested can be part of this fine group of students.

In regards of upcoming clubs being introduced to York students, the formation of the York Ski Club. This club is for the purpose of allowing all members of the York Federation to participate in downhill and crosscountry activities.

An organization meeting will be set for the date of November 25, the meeting will take place at the CYSF office, Room 105, Central Square at 1pm. The agenda will be an organization meeting, membership signing and a report.

Brian Hayden
Vice-President of
Social and Cultural Affairs



They're going to change the way you think about contraception.

Because our condoms are designed to do more than just prevent you from contributing to the population explosion. They're designed to add to your enjoyment. While all Searle Condoms are dry-lubricated for greater sensitivity and have a reservoir tip, each has its own special difference.

STIMULA® have multiple ribbing on the shaft...a feature designed for a man...with a woman in mind. Adds to the pleasure for both partners.

PRIME® combine traditional shape with economy.

CONTURE® are shaped. To fit you. Which means they feel better and stay put.

Whichever you choose, we believe they're going to change the way you think about contraception.

Today's Condom.

Available on display in drugstores or ask for them by name. In packs of 3's, 12's and the new 36's.

Who knows more about contraception than Searle
SEARLE Searle Pharmaceuticals
400 Iroquois Shore Road
Oakville, Ontario L6H 1M5

