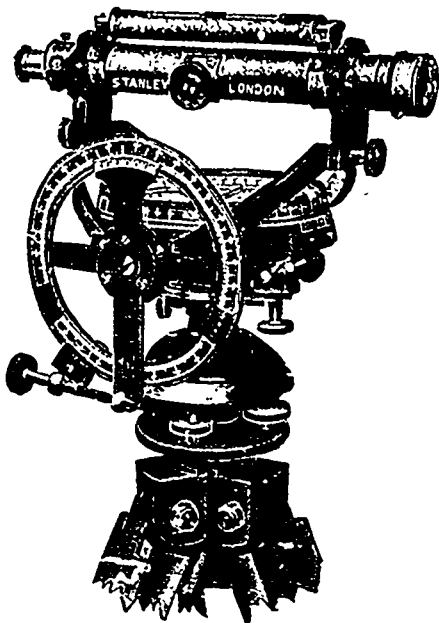


STANLEY

Largest manufacturers of Surveying and Drawing Instruments in the world. Makers to the Canadian Government.

Combined Mining Dial, Level and Theodolite.

The above instrument is fitted with a stand, with solid head, and an improved form of Hoffman head, Clamp and Tangent movement to the Limb, which is outside reading by two Verniers to single minutes. The Gimbal is cranked so that THE TELESCOPE WILL READ 00° BOTH WAYS.



PRICE LIST POST FREE.

Cablegrams : "Turnstile London."

Great Turnstile, Holborn, London, England.

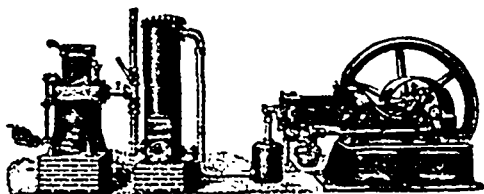


THREE AND FOUR YEAR

Courses in

Mining, Chemical, Civil,
Mechanical and Electrical
Engineering,
Mineralogy and Geology,
Biology and Public Health

Write Secretary, Kingston, Ont., for Calendar.



Cheapest Power

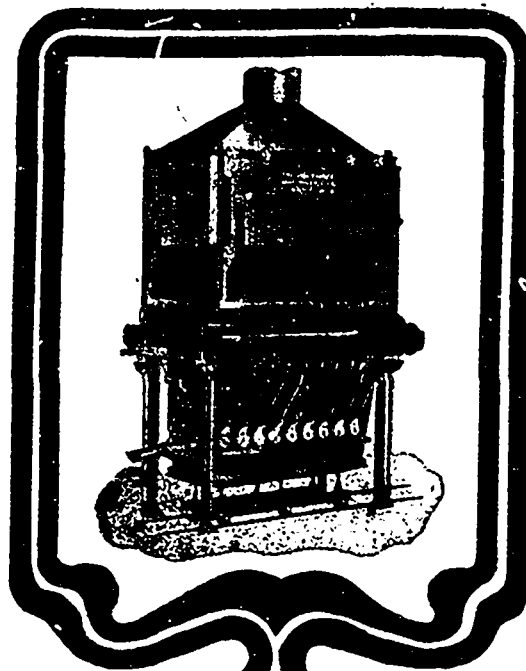
60 PER CENT. SAVING IN FUEL

Suction Gas Producers for Gas Engines. 1 lb. of coal per h.p. hour. Costs $\frac{1}{2}$ cent. per h.p. hour. Built for any capacity required.

Automatic work.

Contracts undertaken for complete power-plants and results guaranteed.

Dr. OSKAR NAEGEL, Metallurgical Engineer.
90 Wall Street, New York.



MINING Machinery

Our experience in designing and installing complete plants has extended over a period of many years, and this experience together with the fact that we are in close touch with many eminent metallurgists places us in a position to supply our customers with machinery of the latest and most improved type, and with plans for its installation in accordance with up-to-date and practical methods of handling ore so as to obtain the best commercial as well as metallurgical results.

COMPLETE POWER LIGHTING HEATING AND PUMPING PLANTS

CHAS. C. MOORE & CO.
ENGINEERS

PACIFIC COAST AGENTS FOR
The Holthoff Machinery Co.,
EUDARY, WIS.

MAIN OFFICE

63 First St. San Francisco, California.
Branches—New York, 1303 Havemeyer Bldg; Seattle, 218 Second Ave. S.; Los Angeles, 321 Trust Bldg.; Baker City, Oregon; Salt Lake City, Utah.
Adver. 282.