

CHESS.

TO CORRESPONDENTS.

AGUSTA, Toronto; Brampton Chess Club; R. B., Hamilton; T. P. B., Seaforth; J. H., Toronto, and R. N., Hamilton—we regret that a White Pawn was inadvertently omitted at King's 5th in Problem No. 5, thus allowing a double solution. Amend the position and try again; it will well repay the time bestowed upon it, particularly if you succeed in discovering the solution.

J. B. C., Toronto.—Your Problem appears below, for which accept our thanks.

SOLUTION TO PROBLEM No. 4, by "Theodore," and "C. C." are correct: all others are wrong.

SOLUTION TO PROBLEM No. 4.

WHITE.

- 1 P. to K. R. 4
- 2 Q. to Q. B. 6
- 3 Q. takes P. mate.

BLACK.

- K. to K. 4 (A)
- K. to K. B. 4

(A)

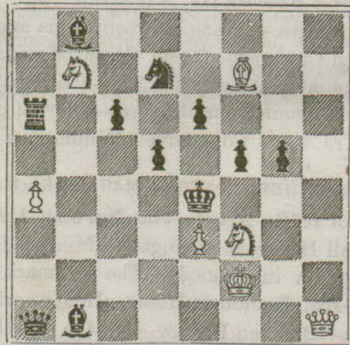
- 2 K. takes P.
- 3 Q. to Q. 4 mate.

- K. to Q. B. 5
- K. to Q. B. 6

PROBLEM 5—Amend this Problem by inserting White Pawn at King's 5th.

PROBLEM No. 6.—By J. B. C. OF TORONTO.

BLACK.



WHITE.

White to play, and mate in six moves.

We have received the score of a couple of games played between the Egmondville and St. Catharine's Chess Clubs by telegraph, resulting in the defeat of the St. Catharine's club. These games exhibit fair average play, and should have insertion; but this being the closing number of the volume, our publishers cannot spare the room.