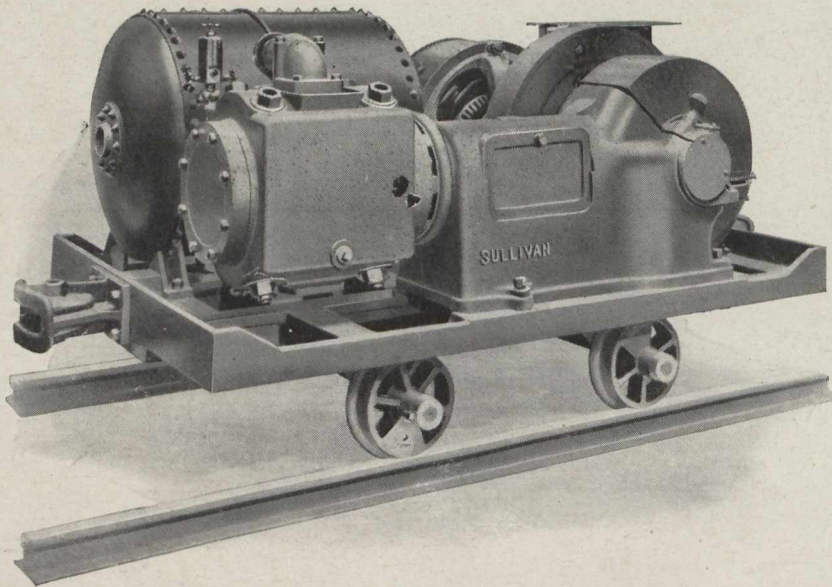


# ROCK IN COAL MINES



is a common cause of delay in development. When rock bottom must be lifted by hand-drilling, top brushed, overcasts cut, etc., your labor cost is high, and the dead work holds back your tonnage output.

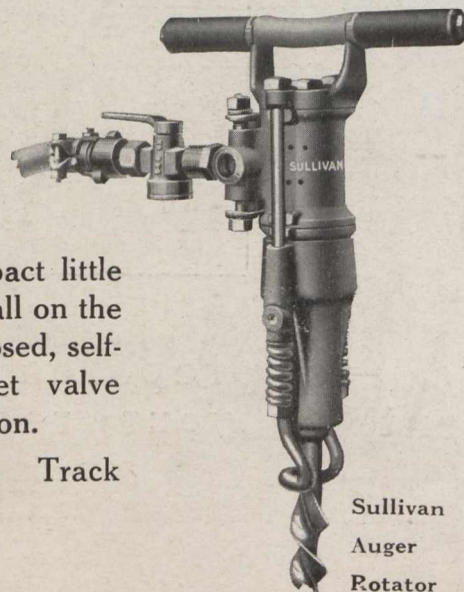
## A SULLIVAN PORTABLE DRILL RIG

Will enable you, as it has enabled scores of other colliery operators, to remove rock much more rapidly and at far lower labor cost than is possible by hand drilling.

*This outfit consists of a "WK-2" MINE CAR COMPRESSOR and one or more Sullivan ONE MAN ROTATORS.*

"WK-2" Compressors are complete, compact little outfits, with receiver, motor and starting panel all on the same truck. The compressor is completely enclosed, self-oiling, with hopper jacketed cylinder and inlet valve unloader. The drive is by internal gear and pinion.

The motor (a. c. or d. c.) is damp proof. Track gauges as orderd.



Sullivan  
Auger  
Rotator

BULLETIN 675-1

## Sullivan Machinery Company

Toronto  
Boston  
Duluth

Nelson, B.C.  
Juneau

122 South Michigan Ave.  
CHICAGO, ILL.

New York London, Eng.  
Spokane Sydney, N.S.W.