

The house arrangement for "Inherit the Wind"

DMDS presents

Inherit the Wind

March 19-21

The play's history

"Inherit the Wind", which was first presented in 1955, has a strong theatrical history. The play ran for 803 performances on Broadway before going on numerous cross-country tours and finally was made into a movie of the same name starring the late Spencer Tracy. Several of the notable actors who were members of the Broadway cast were: Tony Randall, Ed Begley, Paul Muni and Michael Constantine.

"Inherit the Wind" is not a history. The events which took place in Dayton, Tennessee, during the scorching July of 1925 are clearly the genesis of this play. It has, however, an exodus entirely its own.

Only a handful of phrases have been taken from the actual transcript of the famous Scopes trial. Some of the characters of the play are related to the colorful figures in that battle of giants, but they have a life and language of their own — and therefore, names of their own.

The collision of Bryan and Darrow at Dayton was dramatic, but it was not a drama. Moreover, the issues of their conflict have acquired new dimensions and meaning in the thirty years since they clashed at the Rhea County Courthouse.

So "Inherit the Wind" does not pretend to be journalism. It is theatre. It is not 1925. The stage directions set the times as "Not too long ago". It might have been yesterday. It could be tomorrow.

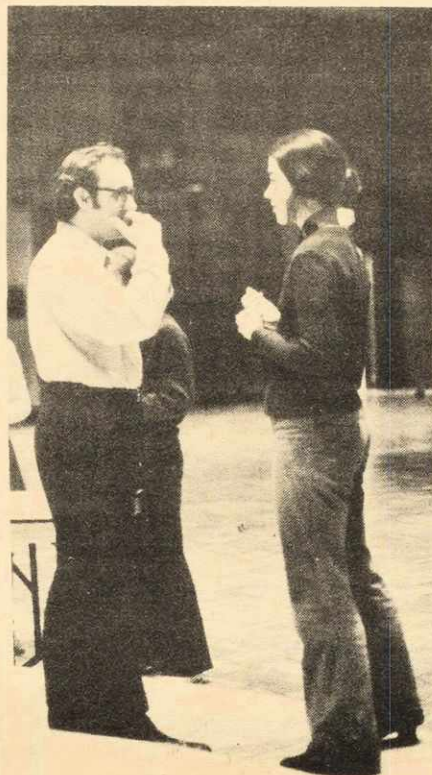
Jerome Lawrence
Robert E. Lee

The director's message

After a prolonged research period, I have been fortunate to obtain the chance of directing the great play. Even more startling to me is the fact that I have such an excellent group of people to work with at Dalhousie. Such co-operation and enthusiasm is unusual at the university level.

"Inherit the Wind" is a play about commitment and people. It is not a lecture or a speech. It is theatre and the message is very clear. Man must make his own choice and the powers of our land must create the situation and atmosphere in which that may happen.

D. Ray Pierce
Director



Director D. Ray Pierce gives Stephanie Reno, as Mrs. Brady, some helpful advice.

Play different this year

The Dalhousie Glee and Dramatic Society is presenting "Inherit the Wind", by Jerome Lawrence and Robert E. Lee, on March 19 - 21. Performances will be held at 8:30 p.m. in the McInnes room of the Dal SUB.

Tickets are \$2 for non-students and \$1 for students. They are available at the central box office in the SUB, or at 424-2298.

The play, about the famous "monkey trials", will be different from other attempts made by the former DGDS. This year high school students will be involved in the cast. There will be lobby displays, audience participation, theatre-in-the-round, and a town newspaper, to top it all off.



The cast rehearses as Director Ray Pierce (back to camera) watches.