

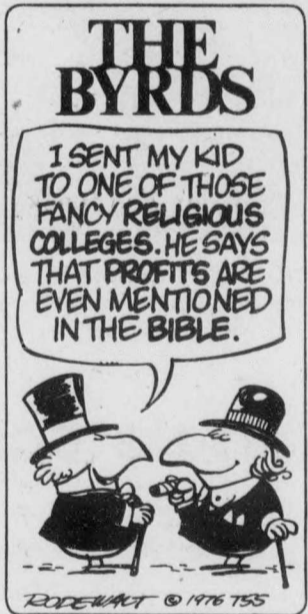
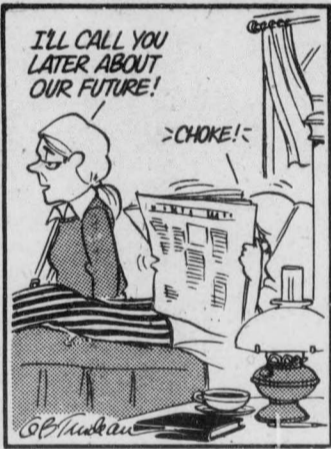
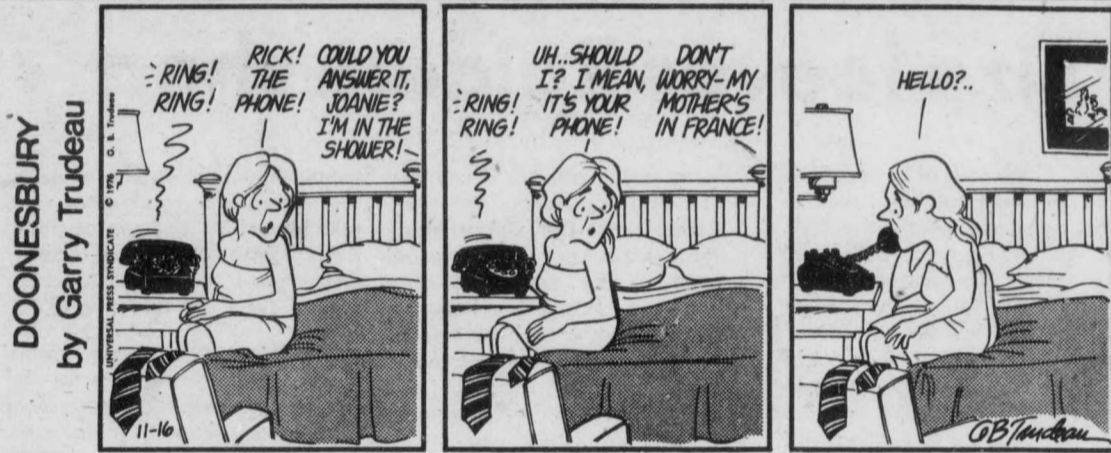
# FUNNIES

## Weekly Crossword

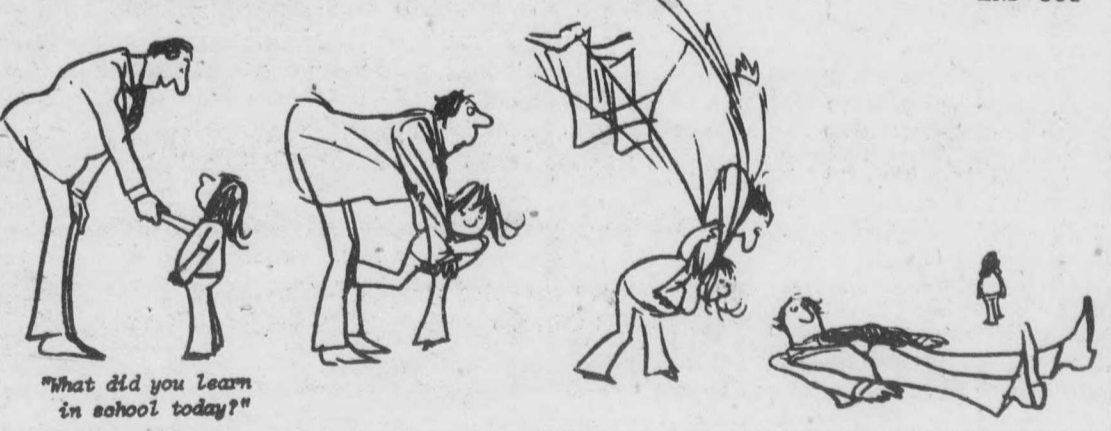
- ACROSS**
- 1 Human trunk part
  - 6 Continent
  - 10 Directed
  - 14 Take place subsequently
  - 15 Lodging houses
  - 16 Grapelike
  - 17 Warning sounds
  - 18 Grain for brewing
  - 19 E. Indian prince
  - 20 Desserts
  - 22 Atlanta resident
  - 24 Clarinet
  - 26 Fished from a boat
  - 27 Ex-workers
  - 31 ---du Diabie
  - 32 Greek mountain
  - 33 Righteous
  - 35 Cut down grain
  - 38 Litigant
  - 39 Athenian statesman
  - 40 Window facet
  - 41 Safety ---
  - 42 Coarse cloth
  - 43 Share
  - 44 Buddy
  - 45 Moistened
  - 47 Entrails
- DOWN**
- 1 Complex networks
  - 2 in a different form
  - 3 Words of understanding
  - 4 Extraordinary
  - 5 Examiners
  - 6 Object
  - 7 Sharp protuberance
  - 8 Estuary
  - 9 Oregon resident
  - 10 Commit a

Answers on page 16

1	2	3	4	5	6	7	8	9	10	11	12	13
14												
17												
20												
27	28	29										
32												
38												
41												
47	48	49										
52												
58												
62												
65												



I've been framed!



**SUNDAY  
NOVEMBER  
21st**

**7:00 & 9:00**

**TILLEY 102**

**Cine-Campus**

Your scores will never be the same.

Tommy  
Ann-Margret Oliver Reed Roger Daltrey Elton John