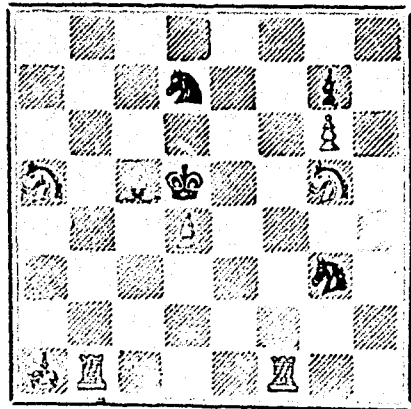


PROBLEM No. 231. Br A. Cyril Pearson. BLACK.



WHITE White to play and mate in three moves.

GAME 370111.

(From the Dramatic Times.)

An interesting game played by Mrs. and Miss F. Down in consultation, against Mr. W. Potter.

[Ruy Lopez Knight's Game]

- WHITE.—(The Allies) 1. P to K 4, 2. Kt to K B 3, 3. B to Kt 5, 4. Kt takes K, 5. Castles (Q), 6. P to Q 3, 7. Kt to Q 2 (e), 8. B to R 4, 9. P to K R 3, 10. Kt to B 3, 11. P to B 3, 12. P takes P, 13. P to Q 4, 14. B to Kt 3 (d), 15. B to Kt 2 (e), 16. Q to Q 3, 17. P to Q R 4, 18. P to B 4, 19. Kt to R 2, 20. P to K R 4, 21. P to K B 4, 22. Q takes P, 23. Q to Q 3, 24. K to R sq, 25. P to Q 5, 26. Kt takes P, 27. K to R 2, 28. R takes Kt, 29. B takes R, 30. Q to Kt 6 (f), 31. P to K B 5, 32. Q to Kt 5, 33. P to B 6, 34. Q takes Q, 35. B to B 2, 36. B to B 4, 37. R takes P, 38. B to B 5 (eb), 39. White resigned.

NOTES.

- (a) Of course, in a serious game Black would not make this weak move. (b) P to Q 3 is best here. It avoids the attack which results at this point provokes. (c) P to Q B 3 would have developed their game more rapidly. (d) P to Q 5 would have worried Black by preventing his King from getting as speedily as he did, into safe quarters. (e) This B would have been more serviceable at K 2. (f) The allies play with great spirit, considering the superior army that is opposed to them, and the skillful general that is commanding it.

SOLUTIONS

Solution of Problem No. 229.

- WHITE. 1. Q to K B 2, 2. Mate accordingly.

Solution of Problem for Young Players No. 227.

- WHITE. 1. Q to K B 3 (cb), 2. Kt to K 5 double check and mate.

PROBLEMS FOR YOUNG PLAYERS, No. 228.

- WHITE. 1. Kt to K R sq, 2. R to K 5, 3. Kt to K 5, 4. Pawns at K 7 and K Kt 4.

White to play and mate in two moves.



10,000 Articles of Scientific Interest for Gifts, Presents, &c. Send for catalogue. HEARN & HARRISON, Opticians, Montreal.

\$10 to \$1000 Invested in Wall St. Stocks makes fortunes every month. Book sent free explaining everything. Address BAXTER & CO., Bankers, 17 Wall St., N. Y.

50 Perfumed Chromo and Lane Cards, name in gold in fancy case, 10c. Davids & Co., Northford, Ct.

60 CHROMO, MOTTO, Gilt-Edge & Lilly cards, with name, 10c. Globe Print. Co., Northford, Ct.

60 Perfumed Cards—Motto, Lilly, Floral, Rose Bud—with name and case, 10 cts. ETNA CARD CO., Clintonville, Ct.

50 Perfumed Ocean Gems and Gilt Edge Assorted Cards, name in gold, 10c. ELLA RAY, W. Haven, Conn.



Tenders for Steel Rails.

TENDERS addressed to the Honourable the Minister of Railways and Canals will be received at the Canadian Emigration Office, 31 Queen Victoria Street, E. C., London, England, until JULY 15th, next, for Steel Rails and Fastenings, to be delivered at MONTREAL, as follows:

- 5,000 tons by October 1st, 1879. 5,000 tons by June 1st, 1880. 5,000 tons by October 1st, 1880.

Specifications, Conditions, Forms of Tender, and all other information will be furnished on application at this office, or at the Canadian Emigration Office, 31 Queen Victoria Street, E. C., London, England.

By order, F. BRAUN, Secretary. Department of Railways and Canals, Ottawa, 13th June, 1879.



Pacific Railway Tenders.

TENDERS for the construction of about one hundred miles of Railway, West of Red River, in the Province of Manitoba, will be received by the undersigned until noon on Friday, 1st August next.

The Railway will commence at Winnipeg, and run north-westerly to connect with the main line in the neighbourhood of the 4th base line, and thence westerly between Prairie Portage and Lake Manitoba.

Tenders must be on the printed form, which, with all other information, may be had at the Pacific Railway Engineer's Offices, in Ottawa and Winnipeg.

F. BRAUN, Secretary. Department of Railways and Canals, Ottawa, 16th June, 1879.

\$77 a Month and expenses guaranteed to Agents. SHAW & CO., AUGUSTA, MAINE.

\$333 A YEAR and expenses to agents. Outfit Free. Address: P. O. VICKERY, Augusta, Maine.

50 Perfume, Snowflake, Chromo, Motto Cards, name in gold & jet, by G. A. SCRIBNER, E. Wallingford, Ct.

The Scientific Canadian

MECHANICS' MAGAZINE, AND PATENT OFFICE RECORD, A MONTHLY JOURNAL

Devoted to the advancement and diffusion of Practical Science, and the Education of Mechanics.

THE ONLY SCIENTIFIC AND MECHANICAL PAPER PUBLISHED IN THE DOMINION.

THE BURLAND-DESBARATS LITH. CO.

OFFICES OF PUBLICATION: 5 and 7 Bleury Street, Montreal.

G. B. BURLAND, General Manager.

F. N. BOXER, ARCHITECT & CIVIL ENGINEER, Editor.

TERMS:

One copy, one year, including postage... \$2.06 One copy, six months, including postage... 1.10 Subscriptions to be paid in ADVANCE.

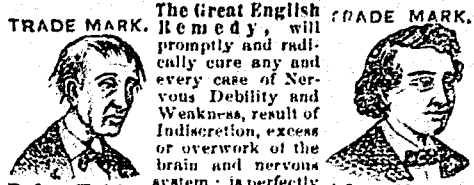
The following are our advertising rates:—For one monthly insertion, 10 cts. per line; for three months, 0 cts. per line; for six months, 8 cts. per line; for one year, 7 cts. per line; one page of illustration, including one column description, \$20; half-page of illustration, including half column description, \$20; quarter page of illustration, including quarter column description, \$10. 10 per cent. off on cash payments.

INVENTIONS and MACHINERY, &c., or other matter of an original, useful, and instructive character, and suitable for subject matter in the columns of the MAGAZINE, and not as an advertisement, will be illustrated at very reduced rates.

REMITTING MONEY.—All remittances of money should be in the form of postal orders. When these are not available, send money by registered letters, checks or drafts, payable to our order. We can only undertake to become responsible for money when sent in either of the above ways.

This Journal is the only Scientific and Mechanical Monthly published in Canada, and its value as an advertising medium for all matter connected with our Manufactories, Foundries, and Machine Shops, and particularly to Inventors, is therefore apparent.

GRAY'S SPECIFIC MEDICINE.



The Great English Remedy, will promptly and radically cure any and every case of Nervous Debility and Weakness, result of Indiscretion, excess or overwork of the brain and nervous system; is perfectly harmless, acts like magic, and has been extensively used for over thirty years with great success.

THE GRAY MEDICINE CO., TORONTO, ONT.

Sold in Montreal by all Wholesale and Retail Druggists, and everywhere in Canada and United States. N.B.—The demands of our business have necessitated our removing to TORONTO, to which place please address all future communications.



GOVERNMENT RAILWAY.

Western Division.

SHORTEST AND MOST DIRECT ROUTE TO OTTAWA.

On and after SATURDAY, JUNE 28th, Trains will leave HOCHELAGA DEPOT as follows:—

Table with columns for A.M. and P.M. times for Express Trains for Hull and St. Jerome.

Trains leave Mile-End Station ten minutes later.

Magnificent Palace Cars on all passenger trains.

General Office, 13 Place d'Armes Square.

STARNES, LEVE & ALDEN, Ticket Agents.

Office 202 St. James and 152 Notre Dame Streets.

C. A. SCOTT, Gen'l Superintendent Western Division.

C. A. STARK, Gen'l Freight and Passenger Agent.

THE COOK'S FRIEND BAKING POWDER

Has become a HOUSEHOLD WORD in the land, and is in every family where Economy and Health are studied.

It is used for raising all kinds of Bread, Rolls, Pancakes, Griddle Cakes, &c., &c., and a small quantity used in Pie Crust, Puddings, or other Pastry, will save half the usual shortening, and make the food more digestible.



SAVE TIME, IT SAVES TEMPER, IT SAVES MONEY.

For sale by storekeepers throughout the Dominion, and wholesale by the manufacturer.

W. D. McLAREN, UNION MILLS, 17-19-52-362, 55 Collage Street.

IMPORTANT NOTICE.

THE Burland-Desbarats Lithographic Co., 5 & 7 BLEURY ST.,

Begs to inform the BANKERS, MERCHANTS and BUSINESS MEN of the Dominion, that their large establishment is now in full operation, and that they are prepared to do all kinds of ENGRAVING

ELECTROTYPING, STEREO TYING, LITHOGRAPHING and TYPE PRINTING.

Photo-Electrotyping & Wood Engraving

IN THE BEST STYLE, AND AT LOW PRICES. Special attention given to the reproduction by

Photo-Lithography OF MAPS, PLANS, PICTURES OR BOOKS OF ANY KIND.

From the facilities at their command, and the completeness of their establishment, the Company feel confident of giving satisfaction to all who entrust them with their orders.

G. B. BURLAND, Manager.

PEA SOUP!

SYMINGTON'S Prepared Pea Soup

Made from the Celebrated Pea Flour, to which is added

LEIBIG'S EXTRACT OF MEAT.

DELICIOUS, NOURISHING

ANTI-DYSPEPTIC.

Made in one minute, without boiling. Sold everywhere in 25ct. tins. Wholesale by

WILLIAM JOHNSON, 25 St. Francois Xavier Street, Montreal.

British American

BANK NOTE COMPANY,

MONTREAL.

Incorporated by Letters Patent. Capital \$100,000.

General Engravers & Printers

Bank Notes, Bonds, Postage, Bill & Law Stamps, Revenue Stamps, Bills of Exchange,

DRAFTS, DEPOSIT RECEIPTS, Promissory Notes, &c., &c., Executed in the Best Style of Steel Plate Engraving.

Portraits a Specialty.

G. B. BURLAND, President & Manager.

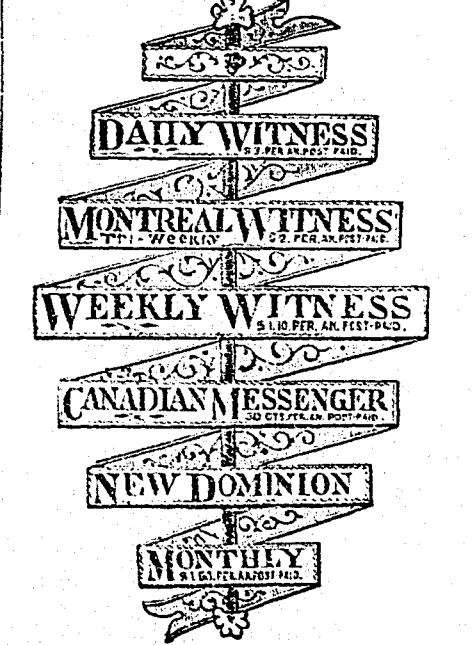
JUST PUBLISHED

CHISHOLM'S ALL-ROUND ROUTE AND PANORAMIC GUIDE OF THE ST. LAWRENCE,

With corrections to date. It contains full descriptions of the points of interest on the "All Round Route," including Hudson River, Trenton and Niagara Falls, Toronto, Ottawa, Montreal, Quebec, Saguenay River, White Mountains, Portland, Boston, New York. It is profusely illustrated, and is furnished with maps of the Route, and a fine panoramic view of the St. Lawrence River. For sale by booksellers and news agents. Sent post-paid to any address on receipt of the price, 50 cts.

C. R. CHISHOLM & BROS., 21-52 373, 179 Bonaventure street, Montreal.

CHEAPEST AND BEST.



JOHN DOUGALL & SON, 918 and 920, St. James Street, Montreal.

Electrotyping and Job Printing, Chromatic and plain

TO LET.

In those central premises forming the corner of Bleury and Craig Streets, and in the adjacent house on Craig Street— OFFICES, double and single. FLATS, admirably adapted for light manufacturing business, with or without steam power. Rent moderate.

Apply to G. B. BURLAND, No. 7 Bleury Street.