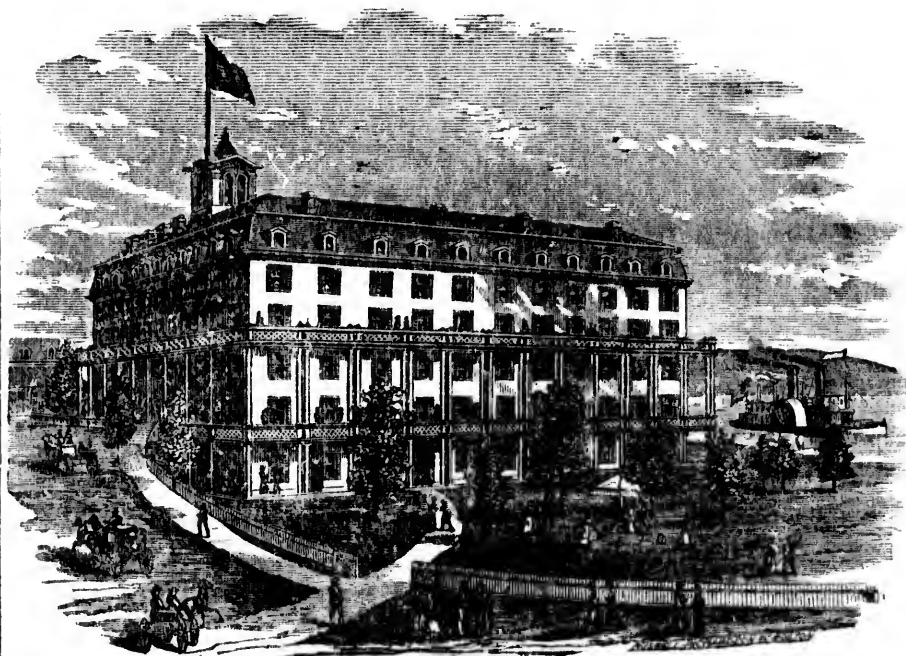


## NEWPORT, VT.



## MEMPHREMAGOG HOUSE, LAKE MEMPHREMAGOG, NEWPORT, VERMONT.

Fitted with all modern improvements, and furnished handsomely throughout. Contains rooms for four hundred guests, is surrounded by fine piazzas, and supplied with gas and steam and pure spring water; Bath and Billiard Rooms, Bowling Alleys, Croquet and Children's Play-Ground. New Boats of the latest designs. First-class Orchestra. Superior Livery Stable.

The Hotel is located on the shore of the lake, within a few rods of the steamboat landing and the railroad depot. View of the lake and surrounding mountains of surpassing magnificence. Location affords a cool and delightful breeze off the water. Atmosphere particularly favorable for the restoration to health of persons afflicted with pulmonary complaints, malarial disorders, and hay fever. Most perfect system of drainage, and modern sanitary precautions. Drives delightful and exceedingly varied. Steamer "LADY OF THE LAKE" makes two trips daily. TERMS—Per day, \$3 to \$3.50; \$10.50 to \$17.50 per week.

**W. F. BOWMAN, MANAGER.**

(Formerly proprietor from 1869 to 1877.)