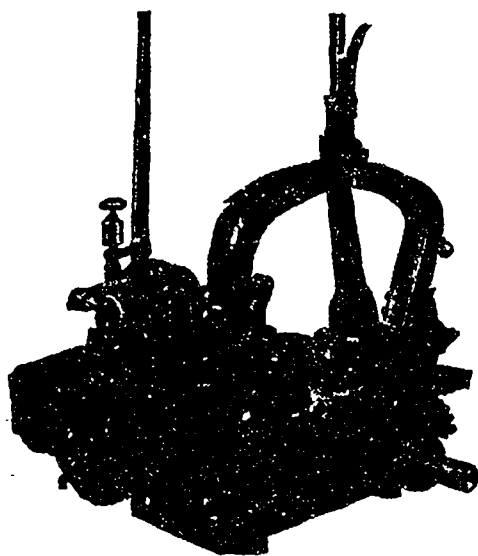


The Wm. Hamilton Mfg. Co., Limited

Builders of a Complete Line of

SAW MILL MACHINERY



Saw mill men are fast finding out and appreciating the great saving effected by using Steam Setting Machines.

We have supplied these machines on trial on the understanding that they were to be returned to us if they did not give every result promised.

Not one of them has ever been returned.

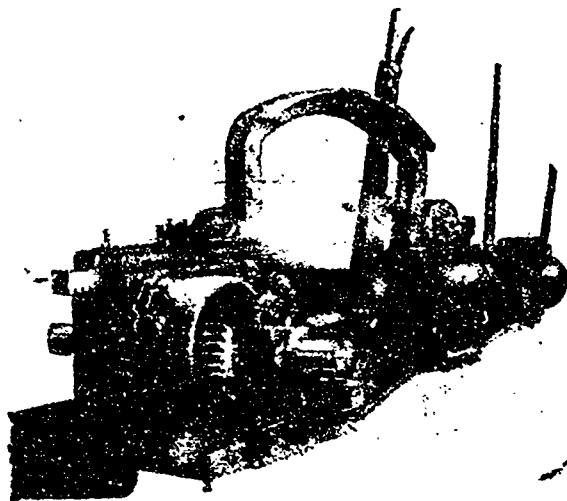
Ask your setter if he could not do better work with one of these machines, then write us for prices and catalogues.

The standard size machine, as shown in cut, is well known to all mill men. Every one in operation is proving daily that you can cut more and better lumber with it.

When deciding on your improvements for next season you must take this machine into consideration.



This cut shows our Steam Set Works for the large blocks in use on the Pacific Coast. It is a very powerful machine, and will set for two-inch lumber as quickly and more easily than the hand lever now sets for one.



Our last illustration shows our

IMPROVED STEAM SETTER

WITH ENCLOSED RATCHET SET WORKS

This is an improved form of the standard machine. We consider it is the most reliable and efficient form of Steam Set Works that exists at the present time.

It will set four inches with one throw of the lever, and is just the thing for mill men sawing timber for export.

We are anxious to tell you more about any of these machines. Why not send for our catalogue?

Head Office and Works :

Peterborough, Ont.

Branch Office :

Vancouver, B. C.

