

MOORE & ALEXANDER
Props

HALF
TONE,
(ON COPPER)
ZINC
ETCHING.

WOOD
ENGRAVING,
ARTISTIC
DESIGNING
&
ELECTROTYPING.

MOST
COMPLETE
ENGRAVING
HOUSE
IN
CANADA.

THE
CANADIAN
PHOTO-ENGRAVING
BUREAU
16
ADELAIDE ST. W.
TORONTO.

QUALITY
DESPATCH
&
REASONABLE
PRICES.

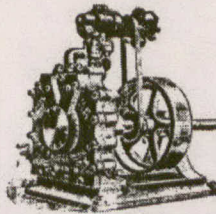
CANADIAN OFFICE & SCHOOL FURNITURE CO. LIMITED
PRESTON, ONT.



OFFICE, SCHOOL, CHURCH, & LODGE FURNITURE

FINE BANK, OFFICE, COURT HOUSE AND DRUG STORE FITTINGS A SPECIALTY

SEND FOR CATALOGUE



THE DAKE SQUARE PISTON ENGINE

Not a Rotary Engine, but an Improved Slide Valve Double Engine, cutting off Steam at the Most Economical Point.

EASY TO OPERATE AND MAINTAIN - Sizes, 1 to 30 Horse Power.

Write for Prices; you will find them remarkably low.

The Jenckes Machine Co.
36 Lansdowne Street - SHERBROOKE, QUE.



The Southampton Mfg. Co., Limited
MANUFACTURERS OF

Moorish Fret Work, Spindles, Grille, Turned and Twisted Mouldings, Spiral Turnings, Balls and Spindles, Newels and Balusters

SEND FOR CATALOGUE. SOUTHAMPTON, ONTARIO, CANADA

ARCHITECTS : CONTRACTORS : ENGINEERS : ETC.

SHOULD SEND FOR A COPY OF THE

Canadian Contractor's Hand-Book

The Canadian Contractors' Hand-Book will be sent to any address in Canada or the United States on receipt of price, \$1.50; to subscribers of the CANADIAN ARCHITECT AND BUILDER, \$1.00.

Branch Office:
New York Life Insurance Building, Montreal.

G. H. MORTIMER, Publisher,
Confederation Life Building, Toronto.