

Leading Manufacturers.

-THE-

Toronto Paper Mf. Co.

WORKS at CORNWALL, Ont.

CAPITAL, \$250,000.

JOHN R. BARBER, (President and Man'g Director.)
CHAS. RIOR'ON, (Vice-President.)
EDWARD TROUT, (Treasurer.)

Manufactures the following grades of paper:

ENGINE SIZED SUPERFINE PAPERS.
WHITE AND TINTED BOOK PAPER,
(Machine Finished and Super-calendered),
BLUE AND CREAM LAID AND WOVE
FOOLSCAPS, POSTS, ETC. ACCOUNT
BOOK PAPERS.**Envelope and Lithographic Papers.**Colored Cover Papers, super-finished.
Apply at the Mill for samples and prices.
Special sizes made to order.**Steam Pumps.**
NORTHEY & CO.,

TORONTO.

—SEND FOR CIRCULAR.—

THE OSHAWA

MALLEABLE IRON CO

Manufacturers of

MALLEABLE IRON,

—CASTINGS—

FOR ALL KINDS OF

AGRICULTURAL IMPLEMENTS, &c

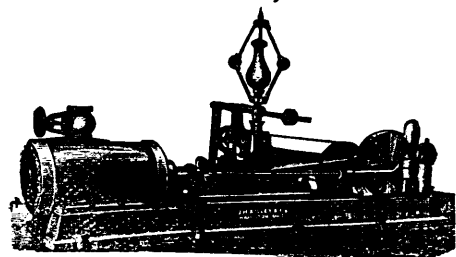
ALSO

PATENT SCREW WRENCHES,
OSHAWA, CANADA.**JOHN PERKINS,**
Manufacturer of
ENGINES, BOILERS,

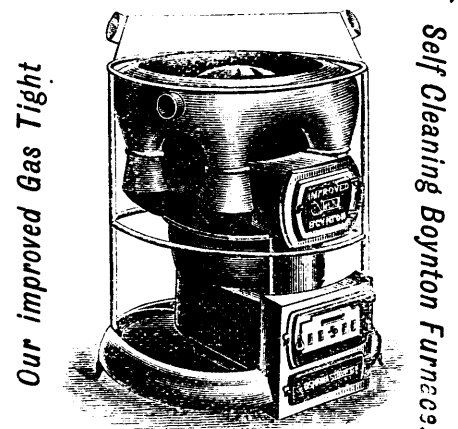
Shaftings, Pulleys, Etc.

153 & 155 Front St. East,

TORONTO.

McKECHNIE & BERTRAM,
Canada Tool Works,
DUNDAS, ONTARIO.Supply complete outfits of Machinery for Railway
Machine Shops, Locomotive Builders, Car Builders,
Implement Manufacturers, Planing Factories, etc.
CONTRACTS taken and fulfilled at shortest notice.
Tenders given, and Price Lists and Catalogues fur-
nished on application.**J. H. KILLEY & CO.,**
HAMILTON, ONT.Builders of the most Simple, Economical and
Modern of all CUT-OFF ENGINES.
C. H. No. 1 Iron and Steel Boilers
of all sizes in stock ready for
delivery!

Leading Manufacturers.

OSHAWA STOVE CO.,

Our improved Gas Tight

Self Cleaning Boynton Furnaces.

OSHAWA, ONT.

COBOURG CAR WORKS.

ALL KINDS OF

RAILWAY CARS

Manufactured

At the

SHORTEST NOTICE.Warranted to give satisfaction. Applications re-
garding terms may be sent toJAMES CROSSEN,
Cobourg, Ont.

TO THE RETAIL TRADE!

OSHAWA KNITTING WORKS,

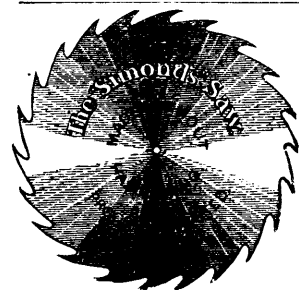
Manufacturers of

WOOLLEN and COTTON HOSIERY,
CARDIGAN JACKETS,
BOYS' JERSEY SUITS,
KNITTED SACQUES & GAITERS.

Lumbermen's Heavy Knit Goods a specialty.

Merchants will do well to examine our goods before
purchasing elsewhere. Travellers are constantly on
the road with samples. Factory situate 50 feet from
the G. T. R. Station, Oshawa, Ont.To any one purchasing not less than \$200 worth of
goods, from the factory sample rooms in the factory,
one half of their railway fare will be refunded.

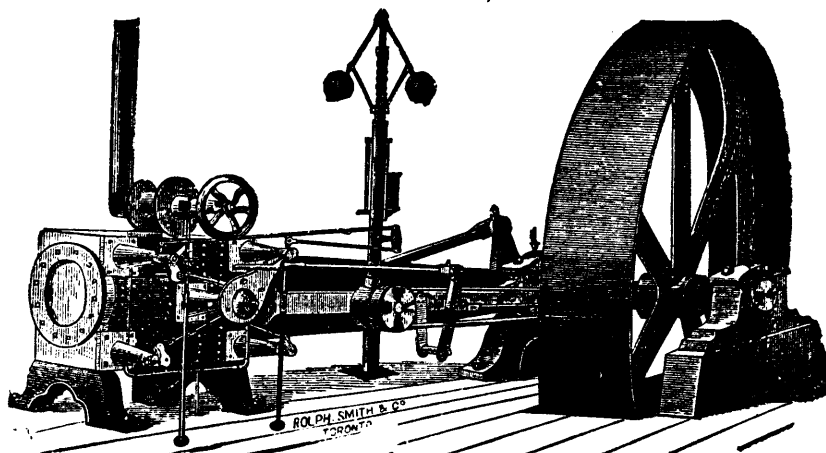
H. C. GIBBS, Manager.

**ST. CATHARINES SAW WORKS.****R. H. SMITH & CO.,**ST. CATHARINES, ONTARIO,
Sole Manufacturers in Canada of**THE "SIMONDS" SAWS,**All our Goods are manufactured by the "Simonds" process.
Our CIRCULAR SAWS are unequalled. We manufacture the
Genuine HANLAN, LANCE TOOTH, DIAMOND, NEW IMPROVED
CHAMPION, and all other kinds of CROSS-CUT SAWS. Our Hand
Saws are the best in the Market and as cheap as the cheapest. Ask
your Hardware Dealer for the St. Catharines make of Saws.

The Largest Saw Works in the Dominion.

INGLIS & HUNTER

4 Strachan Ave., Toronto.

**Harris' Corliss**has all the Latest Improvements, the Father of all CUT-OFF
ENGINES. It has many imitators but no equals.
All classes of **BOILER WORK, MILL WORK** and
Castings, Gearing, Shafting, Hangers, &c.

ALL WORK GUARANTEED SATISFACTORY.

Leading Manufacturers.

1828.

Established

1828.

J. HARRIS & CO.

(Formerly Harris & Allan.)

ST. JOHN, N. B.,

New Brunswick Foundry,

Railway Car Works,

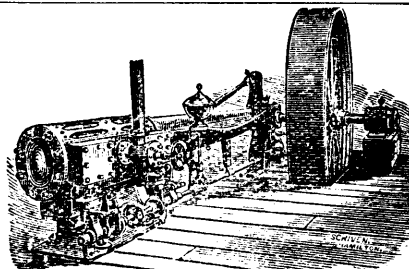
Rolling Mill.

Manufacturers of Railway Cars of every descrip-
tion, Chilled Car Wheels, Hammered Car Axles,
Railway Fish-Plates, Hammered Shafting and
Shapes, Ship's Iron Knees and Nail Plates.**BALTIC STARCH CO.,**

PRINCE EDWARD ISLAND.

This Company has lately completed a new
Factory for making POTATO STARCH and has
adopted the latest American patented and scientific
process for producing the starch, so as to obtain the
highest degree of purity and whiteness in its product.
Correspondence and orders solicited byJAMES M. SUTHERLAND,
Secretary.

Charlottetown, P.E.I.

**THOS. WORSWICK,**

GUELPH, ONT.,

Manufacturers of the WORSWICK "BROWN"
AUTOMATIC CUT-OFF ENGINE.For durability, accessibility of parts and econo-
my of fuel, this engine has no equal. Boilers of
Steel or Iron, made to order, Shafting, Pulleys, and
Hangers furnished on short notice.