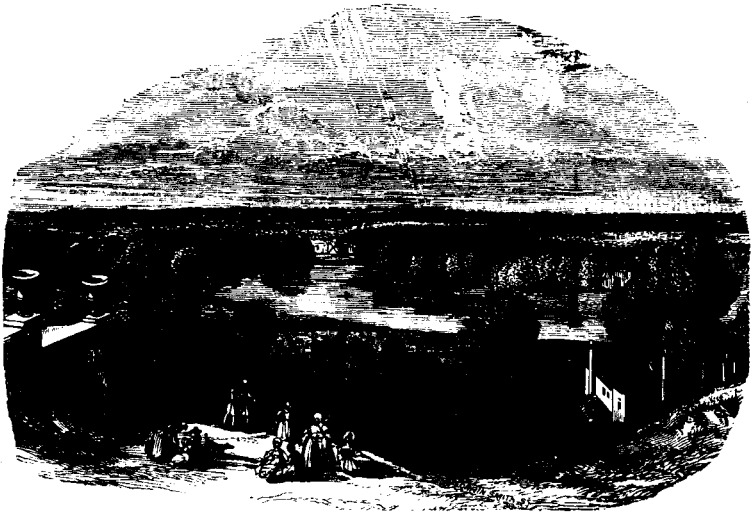
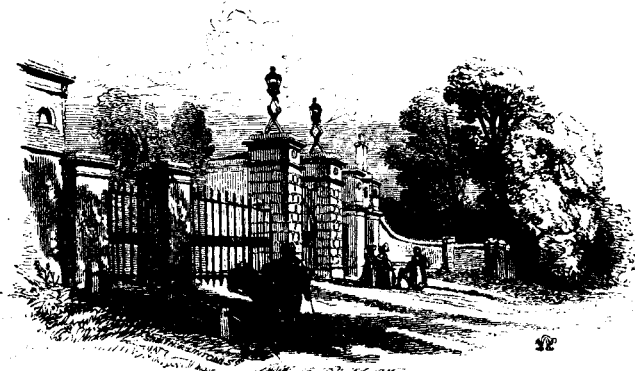


of copse and grove, over the signs of habitation and industry belonging to the heart of so densely peopled a kingdom, art has not failed of its share in decorating the foreground. Villa and terrace cluster along the



VIEW FROM RICHMOND HILL.

slope ; for this has always been a favourite retreat of the Londoners, whether they came for a day or for a decade. Turning from the river, we lapse again under the sovereignty of turf and leaf as we enter the



GATE, RICHMOND GREAT PARK.

gateway of the Great Park. This must have been a second surprise to our countryman, whose disappointment with the front view vented itself in the remark : " Why, this country wants clearing ! "

Here we are within the precincts of royalty. The park, some eight miles in circuit, belongs to the Crown ; as part of it, with the old palace of Sheen, has done since Henry I., and the rest since Charles I., who