

OUR CHESS COLUMN.

All communications intended for this Column should be addressed to the Chess Editor, CANADIAN ILLUSTRATED NEWS, Montreal.

J. W. S., Montreal, P. Q.—Papers to hand. Thanks. M.J.M., Quebec.—We have not heard from you for two weeks. Hope you get the NEWS.

Our remarks on the trials and difficulties of the self denying chessplayer, who boldly assumes the laborious position of Conductor of a correspondence chess tourney have led to our receiving the intimation that there are several lovers of the game in the Dominion who are anxiously waiting for an opportunity to enroll their names as belligerents in another postal encounter.

It may be well here, however, to say that whatever may be the feeling as regards the organization of another correspondence tourney, there can be no doubt as to the usefulness of the two encounters already concluded in inducing such a liking for chess of this nature, that a considerable number of single contests of a similar character are being carried on in Canada to the evident gratification and benefit of the contestants.

We are sorry to learn from a letter which appears in Turf, Field and Farm, that the contemplated chess match between Mr. Max Judd and Mr. Delmar is not likely to take place.

From the contents of the letter, which was written by Mr. W. S. DeVisser of New York, it seems that Mr. Delmar, when he began his arrangements with reference to the match, imagined that no objections to the contest would arise on the part of those who have business claims on his time and attention. Finding, however, that such is not the case, and that the carrying out of the affair might lead to the forfeiture of an important position which he now holds, he wisely determines to give up the match altogether.

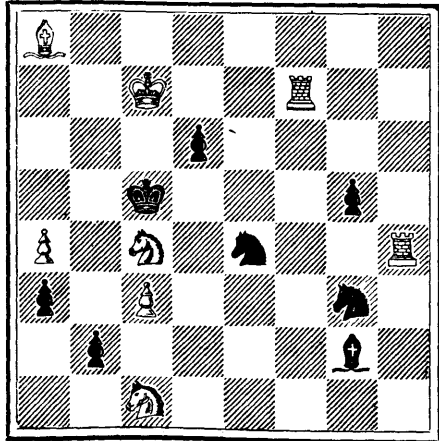
The Chessplayers' Chronicle announces that Mr. Steinitz will challenge the coeditors of the Chess Monthly (Messrs. Huffer and Zukertort) to a chess match of eleven games up. The stakes are not to be less than £100, nor more than £250. Two games to be played each week, and the time limit, fifteen moves per hour. It is also stated that Mr. Steinitz will offer his joint opponents the odds of two games out of the eleven; or, should they deem such an offer unacceptable, he will play them level, or even accept the odds of two games from them.

Modern chess has a good deal of spread about it. A gentleman in Honolulu recently solved a problem composed in Siberia, and published in the Illustrated London News.—Philadelphia Times.

PROBLEM No. 36

By H. M. Prideaux.

BLACK.



WHITE.

White to play and mate in two moves.

Solution of Problem No. 367.

White. Black. 1. R takes P ch 1. Kt takes R 2. Kt takes P 1. Any 2. Mates acc.

GAME 496TH.

Played between Messrs. Morphy and Boden. (Ray Lopez.)

White.—(P. Morphy.) Black.—(S. S. Eoden.) 1. P to K4 1. P to K4 2. Kt to KB3 2. Kt to QB3 3. B to Kt5 3. B to B4 4. P to B3 4. Q to K2 5. Castles 5. P to B3 6. P to Q4 6. B to Kt3 7. Kt to R3 7. Kt to Qsq 8. Kt to B4 8. Kt to B2 9. Kt to K3 9. P to B3 10. Kt to B5 10. Q to Rq 11. B to R4 11. P to Kt3 12. Kt to K2 12. P to Q3 13. P to Q5 13. B to Q2 14. P takes P 14. P takes P 15. Kt to B4 15. R to Bsq 16. P to QKt3 16. B to K3 17. Q to Q3 17. Q to K2 18. B to R3 18. B takes Kt 19. Q takes B 19. K to Bsq 20. Q R to Qsq 20. P to QB4 21. R to Q3 21. K Kt to R3 22. Kt to Rsq 22. Kt to Kt2 23. B to Bsq 23. KR to Bsq 24. P to Kt4 24. Kt takes P 25. P to KR3 25. K Kt to R3 26. R to Ktq 26. K to Rsq 27. Kt to R4 27. R to K Kt sq 28. QR to Kt3 28. P to Kt4 29. Kt to B5 29. Kt takes Kt 30. P takes Kt 30. Q to Q Kt 2 ch 31. KR to Kt2 31. P to Q4 32. Q to K Kt4 32. Kt to R3 33. Q to R5 33. Kt takes P 34. R to B3 34. Kt to Kt2 35. Q to R6 35. B to Qsq 36. B takes R R takes B P

37. Q takes B 37. QR to Bsq 38. Q takes KP 38. R to B4 39. Q to K3 39. P to Q5 40. P takes P 40. R to B6 41. Q to K2 41. P takes P 42. B takes P 42. P to Q6 43. Q to Q2 43. Q to Q4 44. P to Kt4 44. KR to KBsq 45. B to R6 45. R takes Pch 46. K to Kt sq 46. R to Kt sq 47. B to Kt5 47. Q to Q5 48. Q to B4 48. Q to K8 ch 49. Q to Rsq 49. Q to K4 50. B to R6 50. Kt to Ksq 51. R takes Rch 51. K takes R 52. B to Kt3 ch 52. K to Rsq 53. B to KB4 53. Q to Kt2 ch 54. B to Kt3 54. R to R4 55. Q to Qsq 55. R to K4 56. Q takes P 56. R to K8 ch 57. K to Kt2

Given up as drawn.

The remarks on this fine game from the Chessplayers' Chronicle appeared in our Column of last week.

NOTICE.

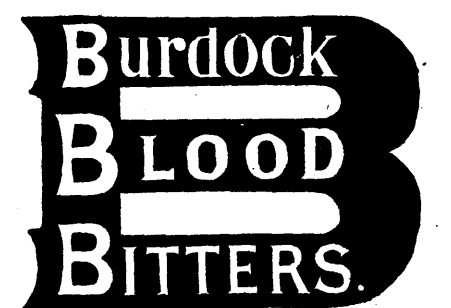
OUR Mr. Nolan is about to start this week on a Western tour for the purpose of collecting subscriptions and canvassing for the CANADIAN ILLUSTRATED NEWS. We trust our friends and subscribers will give him every assistance, and facilitate his work as far as may lie in their power.

Montreal Post-Office Time-Table.

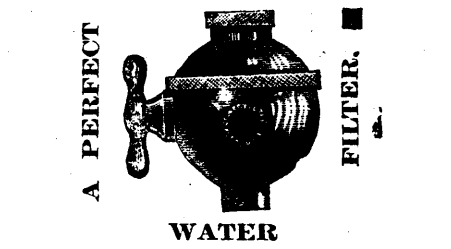
FEBRUARY, 1882.

Table with columns: DELIVERY, MAILS, CLOSING. Rows include: A.M. P.M. ONT. & WESTERN PROVINCES, QUE. & EASTERN PROVINCES, LOCAL MAILS, UNITED STATES, GREAT BRITAIN, &c.

Mails leave for Lake Superior and Bruce Mines, &c. Mails for places on Lake Superior will leave Windsor on Mondays, Wednesdays and Fridays. Mails for Bruce Mines, Garden River, Little Current, &c., will leave Parry Sound on Tuesdays. Mails leave New York by Steamer: For Bahamas, 8th and 21st December. Bermuda, 1st, 15th and 29th December. Cuba, 10th December. Cuba and Porto Rico, 3rd, 17th and 22nd December. Cuba, Porto Rico & Mexico, 3rd, 15th & 24th Dec. Cuba and Mexico, 8th and 29th December. Curacao and Venezuela, 10th & 24th December. Jamaica and West Indies. Jamaica and the U.S. of Columbia (except Panama), 1th and 30th December. For Hayti direct, 6th, 17th and 28th December. Hayti, St. Domingo and Turks Island, 13th Dec. Porto Rico, 10th December. Santiago and Cienfuegos, Cuba, 6th December. South Pacific and Central American Ports, 10th, 20th and 30th December. Brazil and the Argentine Republic, 5th and 21st December. Windward Islands, 10th and 28th December. Grevtown, Nicaragua, 16th December. Mails leave San Francisco: For Australia and Sandwich Islands, 17th December. For China and Japan, 3rd and 21st December.



WILL CURE OR RELIEVE BILIOUSNESS, DIZZINESS, DYSPEPSIA, DROPSY, INDIGESTION, FLUTTERING OF THE HEART, JAUNDICE, ACIDITY OF THE STOMACH, ERYSIPELAS, SALT RHEUM, DRYNESS OF THE SKIN, HEADACHE, AND every species of disease arising from disordered LIVER, KIDNEYS, STOMACH, BOWELS OR BLOOD. T. MILBURN & CO., Proprietors, TORONTO.



A PERFECT FILTER. WATER. Fixes on any tap; no trouble, simple, durable, non-corrosive, and inexpensive. Guaranteed to thoroughly cleanse water from its impurities. GUSTAVE DELORME, 95 St. Francois Xavier Street. Dominion Agent for the Crocker Filter Company, Boston. 40 CARDS all Chromo, Glass and Motto, in Case name in gold & jet 10c. West & Co., Westville, Ct.

Private Medical Dispensary. (Established 1860), 25 GOULD STREET, TORONTO, ONT. Dr. Andrews' Purificator, Dr. Andrews' Female Pills, and all of Dr. A.'s celebrated remedies for private diseases, can be obtained at the Dispensary. Charges Free. All letters answered promptly, without charge, when stamp is enclosed. Communications confidential. Address, R. J. Andrews, M. S., Toronto, Ont.

NORMAN'S ELECTRO-CURATIVE BELT INSTITUTION. (ESTABLISHED 1874.) A. NORMAN, Electrician. 4 QUEEN STREET EAST, TORONTO, ONT. CONSULTATION FREE. Large Circulars, with Testimonials, may be had on application.

Cadbury's COCOA ESSENCE. PURE, SOLUBLE, REFRESHING. It is often asked, "Why does my doctor recommend Cadbury's Cocoa Essence?" The reason is that being absolutely genuine, and concentrated by the removal of the superfluous fat, it contains FOUR TIMES the AMOUNT OF NITROGENOUS or FLESH-FORMING CONSTITUENTS of the average of other Cocos which are mixed with sugar and starch. Beware of imitations, which are often pushed by shopkeepers for the extra profit.

Q. M. O. & O. RAILWAY. Change of Time. COMMENCING ON Monday, Jan. 2nd, 1882. Trains will run as follows: MIXED, MAIL, EXPRESS. Leave Hochelaga for Ottawa, 8:20 p.m. 8:30 a.m. 5:00 p.m. Arrive at Ottawa, 7:55 a.m. 1:20 p.m. 9:50 p.m. Leave Ottawa for Hochelaga, 10:00 p.m. 8:10 a.m. 4:55 p.m. Arrive at Hochelaga, 9:45 a.m. 1:00 p.m. 9:45 p.m. Leave Hochelaga for Quebec, 6:40 p.m. 3:00 p.m. 10:00 p.m. Arrive at Quebec, 8:00 a.m. 9:50 p.m. 6:30 a.m. Leave Quebec for Hochelaga, 5:30 p.m. 10:10 a.m. 10:00 p.m. Arrive at Hochelaga, 7:30 a.m. 4:50 p.m. 6:30 a.m. Leave Hochelaga for St. Jerome, 6:00 p.m. Arrive at St. Jerome, 7:45 p.m. Leave St. Jerome for Hochelaga, 6:45 a.m. Arrive at Hochelaga, 9:00 a.m. Leave Hochelaga for Joliette, 5:15 p.m. Arrive at Joliette, 7:40 p.m. Leave Joliette for Hochelaga, 6:20 a.m. Arrive at Hochelaga, 8:50 a.m. (Local trains between Hull and Aylmer.) Trains leave Mile-End Station ten minutes later than Hochelaga. Magnificent Palace Cars on all Day Passenger Trains, and Sleeping Cars on Night Trains. Trains to and from Ottawa connect with Trains to and from Quebec. Sunday Trains leave Montreal and Quebec at 4 p.m. All Trains Run by Montreal Time. GENERAL OFFICES—13 PLACE D'ARMES. TICKET OFFICES: 13 Place D'Armes, } MONTREAL. 202 St. James Street, } Opposite ST. LOUIS HOTEL, Quebec. L. A. SENECAI Gen'l Sup't.

THIS PAPER MAY BE FOUND ON FILE AT GEO. F. ROWELL & CO'S Newspaper Advertising Bureau (10 BRUCE STREET), WHERE ADVERTISING CONTRACTS may be made for it. NEW YORK.

British American BANK NOTE COMPANY, MONTREAL. Incorporated by Letters Patent. Capital \$100,000.

General Engravers & Printers. Bank Notes, Bonds, Postage, Bill & Law Stamps, Revenue Stamps, Bills of Exchange, DRAFTS, DEPOSIT RECEIPTS, Promissory Notes, &c., &c., Executed in the Best Style of Steel Plate Engraving. Portraits a Specialty. G. B. BURLAND, President & Manager.