

reached and that the company will build a magnificent hotel, depot and train sheds, at an estimated cost of \$2,500,000.—The city may establish a plant for the manufacture of sewer pipe.—The city desires tenders by 17th inst. for supply of a No. 7½ gyratory crusher, together with belting, pulleys, couplings, three boilers, engine, duplex feed pump, etc.—John Thomson intends building a brick block opposite the City Hall.—American capitalists are looking into the advisability of making a large investment in the erection of new buildings in this city. The First National Bank and the National Appraisal Co., of Chicago, are interested.—James Chisholm, architect, is this week taking tenders on addition to warehouse for A. Macdonald Company.—Tenders are invited by C. J. Brown, City Clerk, up to 23rd inst., for erection of Carnegie library building. Plans by H. S. Griffiths, architect. It is proposed to construct an asphalt pavement on Spence street, from Fortage avenue to Broadway, cost \$10,700.—The city desires tenders by 16th inst. for supply of 1,000 glass insulators.—J. H. G. Russell architect, is calling for tenders for new building for Campbell Bros. & Wilson, which will be 132x88 feet, four storeys and basement, of stone and brick, with freight and passenger elevators.—The new building for Foley, Lock & Larson will be 100x100 feet, five storeys and basement, with two elevators and cold storage plant, estimated cost \$60,000.—Tenders have been taken on new dry goods store for Stobart Sons & Company; 91x133 feet, 5 storeys, stone, with freight and passenger elevators and other modern improvements.

TORONTO, ONT.—A. W. Holmes, architect, 170 Spadina avenue, invites tenders up to Tuesday, 17th inst., for erection of presbytery on east side of Power street.—It is understood that work will be commenced early in the spring on the new Metropolitan Bank building to be built on the south-east corner of King and Jordan streets, from plans by Darling & Pearson, architects.—Gregg & Gregg, architects, 94 King street west, have prepared plans for a four-storey and basement brick factory and warehouse to be built on the corner of King and John streets by the Eclipse Whitewear Company, steam heating, with basement seven feet above ground.—The new building to be erected on the corner of King and Simcoe streets by the Canadian General Electric Company will have stone for the lower storey and brick and terra-cotta for the upper two stories. It is to be constructed with steel girders, the first two flats with plain brick walls

and to be used for storage and exhibition purposes, and the third flat to be fitted up as offices. Darling & Pearson are the architects. Tenders are wanted at 86 Palmerston ave. for excavation, brickwork and plastering.—The Temiskaming and Northern Ontario Railway Commission have decided to call for new tenders for the supply of steel rails to lay 60 miles of the main line and 5 miles of sidings.—The Canadian Horse Breeders' Association are considering a proposition to erect
(Continued on page 6.)

DEBENTURES

Municipalities contemplating the issue of Debentures will find it to their advantage to communicate with

G. A. STIMSON & CO.

Investment Dealers

24 and 26 King St. W.

TORONTO

Pittsburgh Testing Laboratory,

LIMITED

Inspecting and Metallurgical

Engineers and Chemists.

SPECIALTIES: Inspection of RAILS and all material for BRIDGES, BUILDINGS, and other structures, cast iron pipe, wood and steel railroad cars.

MANUFACTURE AND ERECTION.

Expert examination and reports, chemical analyses and physical tests of all kinds. Cement Testing.

745 St. James Street, - Montreal, P. Q.

H.F. STRICKLAND ELECTRICAL ENGINEER

SPECIALTY

Reports, Valuations, &c., for negotiations relative to Municipal Ownership.

35 ADELAIDE ST. E., TORONTO
PHONE, MAIN 2813.

The DeLano-Osborn Engineering Co., Limited
506 Manning Chambers, Toronto.

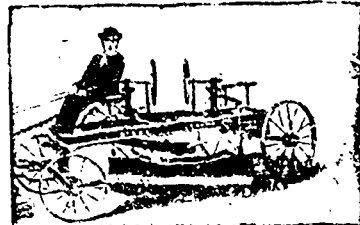
CONSULTING AND DESIGNING ENGINEERS.

Consultations, Plans, Specifications and Supervision for Bridge work, Steel Building Frames, Portland Cement Plants, Power and Miscellaneous Plants, Water Power Development, Electric Railways, etc.

Inspectors of Structural Material and of Railway Equipment.

THE STEEL "CHAMPION" IS THE KING OF GRABERS

"CHAMPION" Road Machines are now in use in every Province of Canada.



Address for 20th Century Catalogue

The Good Roads Machinery Co., Limited
(Late) Killey-Beckett Engine Works
144 YORK STREET - HAMILTON, ONT

JOSSON CEMENT .. Manufactured at. NIEL ON RUPELL

Is the Highest Grade Artificial Portland Cement and the Best for High Class Work. Has been used largely for Government and Municipal Works.
TO BE HAD FROM ALL CANADIAN DEALERS

C. I. de Sola, Manager in Canada :: 180 St. James Street, MONTREAL



"Lehigh" Portland Cement

Capacity 9,000 Barrels every Day in the Year.

For Sidewalks and all other work requiring the highest quality Portland Cement Used by the U. S. Government and the largest contractors and users of Portland Cements in the United States.

Absolutely the most popular Cement in Canada on account of its merits.

For Prices, etc., address—

THORN CEMENT CO. - Buffalo, N. Y

WARREN'S BITULITHIC PAVEMENT

IS
THE BEST FORM
OF

Warren's Bituminous

Macadam Waterproof

Pavement

Write for Circulars.

THE WARREN BITUMINOUS
PAVING CO., LIMITED.

104 Bay Street, Toronto, Ont.
P. O. Box 325, London, Ont.

- * Bitulithic has the unqualified endorsement of experts
- * It combines the good qualities of the best forms of pavement.
- * The stone takes the wear of traffic.
- * Unexcelled for pleasure driving or for heavy teaming.
- * Less noisy than any other pavement.
- * It has been successfully laid on hills up to 12% grade.
- * The cement used will not rot or disintegrate.
- * Horses will not slip on it.
- * It enhances property values.
- * Cheapness is merely incidental to other good qualities.