

The Government has resolved to adjourn Parliament at the end of July until the middle of October.

The marriage of William O'Brien, the well-known Irish leader, and Miss Raffalovitch, daughter of a Paris banker, took place in London on Wednesday. The ceremony was performed by Archbishop Croke of Cashel.

The Italian Peace Arbitration Association is about to send to President Harrison an address congratulating him upon the debates in the Peace Congress, and expressing a hope that other countries will imitate the example set by the United States.

Sir Edwin Arnold, the poet, has found his lost son in Japan. The boy ran away to sea six years ago, and when his sister, Miss Arnold, discovered him, he was third mate on a tramp steamer in Yokohama harbor. He had married in Australia, but was forced to go to sea to make a living.

Miss Phillippa Fawcett, a daughter of the late Professor Fawcett, the blind philosopher and statesman, has won the highest honors at Cambridge University. She is bracketed as superior to a senior wrangler. Miss Fawcett is 22 years of age and is described as a charming young woman.

La Grande Chartreuse, the famous monastery in the Department of Isere, fourteen miles from Grenoble, has been much damaged by the explosion of a quantity of dynamite. The dastardly outrage was the work of design, and is believed to have been done by persons living in the neighborhood, who took that means of venting their anger at the failure of an attempt made by them to extort blackmail from the monks in charge.

Intense feeling exists among the natives of Tokio against foreigners owing to the supposed discourtesy of the Rev. Dr. Summers, Principal of the English schools, in not properly saluting the Dowager Empress when she was passing on the street. Her escort struck Dr. Summers in the face with a lance. Dr. Summers felt compelled to leave for England. Afterward, while students of the American Mission schools were playing ball, a party of native students attacked the Rev. Mr. Imbrey, of New Jersey, a teacher, and severely beat him. There are threats of a general outbreak against the foreigners. American warships are expected at Nagasaki next week, and are anxiously waited for by all the foreigners.

The Special Panama Commission has prepared a fresh report on the prospects of the canal in case it is completed. In this the annual cost of maintaining is placed at 5,500,000 francs. The expenses of administration are placed at 1,800,000 francs annually, and the cost of transit is estimated at 10,000,000 francs annually. The income for the first four years is estimated at 31,250,000 francs. This is calculated on an average annual tonnage for that period of 5,100,000 tons, and the proposed rate of charge per ton is twelve and one-half francs. The Commission estimates that after the first four years there should be an annual increase in the tonnage of 250,000 tons, until a maximum tonnage of 6,000,000 should be reached. After the Canal has been in operation twelve years the annual net receipts, all expenses being deducted, are estimated at 67,000,000 francs. This amount would be distributed between the present and future shareholders in accordance with the terms of a contract to be concluded between the old company and the new.

Norman's Electro-Curative Belts and Insoles
UNEQUALLED For the Relief and Cure of NERVOUS DEBILITY, INDIGESTION, RHEUMATISM, SLEEPLESSNESS, SEXUAL WEAKNESS and all Nervous Diseases. Established 1871. CONSULTATION AND CATALOGUE FREE. A. NORMAN, M.E., 4 QUEEN ST. E., TORONTO, ONT. N.B.—These Appliances are largely imitated, but never equalled.

THE DOMINION PRINT CO.

Are prepared to Supply the Trade with
MARINE PAINTS
 AS BELOW

ATLANTIC ANTIFOULING COMPOSITION for Iron Ships.
 MOSLEY'S COPPER PAINT, for Wooden Ships.
 LIQUID MARINE BLACK PAINT, GREEN.
 SEAM PAINT, a Perfect Substitute for Rosin. Also, Black and Bright Varnish, Roofing Pitch, Tar, &c. Quality guaranteed equal to anything manufactured.

Office & Works, Dartmouth.
 TELEPHONE 920.

FOR SALE.

Rose Hill Cottage, Middle Sackville
 HALIFAX COUNTY.

A Seven-Room House,

With Pantry, Sink-Room, &c. Good well near at hand. Two and a Half Acres of LAND, partly under cultivation, with Shade and Fruit Trees. One Mile from Beaver Bank Station. Address

CHARLES DONAHOE.
 Near Backville.



WE FILL TEETH, MAKE TEETH, AND REPAIR TEETH.

In fact we do everything in Dentistry, and do it well.
 FEES LOW.

Rooms, 125 BARRINGTON ST.

J. E. MULLONEY & CO. DENTISTS

TOWER'S

AMERICAN OIL CLOTHING,
 HATS, Etc.

The Subscriber wishes to inform the Trade that he has now on hand a FULL and COMPLETE STOCK of the above Celebrated Goods. They are Superior to any other OIL CLOTHING sold in this market, and prices quite as low.

An Inspection of Goods Solicited and Prices Furnished to the Trade on Application.

JOHN P. CHETWYND, Agent,

HEAD YOUNG AND HART'S WHARF.

Gentlemen's Furnishing Emporium,
 OPPOSITE HALIFAX CLUB.

FREEMAN ELLIOT.

New Importations of
 Gentlemen's Furnishing Goods.

Spring and Summer Underwear.

Scarfs, Ties, Collars, Braces, White and Fancy Shirts, Boys' and Youths' Tweed Suits, Children's Sailor Suits, Serge Kilt Suits. My Stock will be found the Largest and best Assorted in the city.

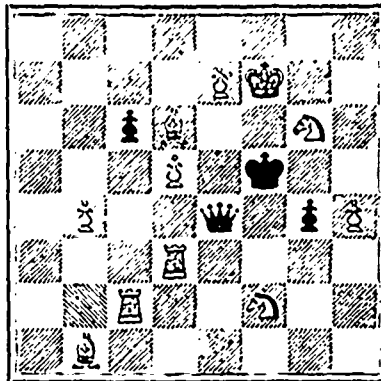
CHESS.

Solution to Problem No. 25, P to B4. Solved by C. W. L. and J. W. Wallace

No. 21, R to KR7, by J. W. Wallace, too late for acknowledgment in last issue.

PROBLEM NO. 25.

CROYDEN GUARDIAN.
 BLACK 4 pieces



WHITE 11 pieces.
 White to mate in two moves.

GAME NO. 28.

Played at the South Norwood Chess Club, Herr Zukertort contesting twenty games simultaneously over the board.

Bishop's Gambit.

WHITE	BLACK.
Herr Zukertort.	L. P. Reos
1 P to K4	P to K4
2 P to KB4	P takes P
3 B to B4	P to Q4
4 B takes P	Q to K5 ch
5 K to B sq	P to KKt4
6 Kt to KB3	Q to R4
7 P to KR4	B to Kt2
8 P to Q4	Kt to K2
9 Kt to B3	P to QB3 a
10 B to B4	B to Kt5
11 B to K2	P to KR3
12 K to Kt sq	Q to Kt3
13 Kt to K5 b	B takes B
14 Q takes B c	Q to Q3 !
15 Q to B2	B takes Kt
16 P takes B	Q takes P
17 B to Q2	P to B3
18 R to K3	Kt to Q2
19 R to K sq	Kt to QKt3
20 Kt to Q sq	Castles QR
21 B to B3	Q to K3
22 R to Q3	Kt to K3
23 B to Q4	Kt to K4
24 B takes KKt	P takes B
25 R to QR3	P takes P
26 R takes P	K to B2
27 Kt to B3	P to R6
28 Q to B5	Q to K5 d
29 Q takes KP ch	R to Q3
30 R to K2	P to B6
31 R to Q2	R to Q sq
32 R to R5	Kt to R5 e
33 Kt to Kt5 ch	K to Kt sq
34 Q to QR5	P to R7 ch
35 K takes P	Q to R5 ch
36 K to Kt sq	P to B7 ch
37 Q takes P	Q tak - Q ch
38 R takes Q	R to Q8 ch
39 K to R2	Kt takes R

NOTES BY W. WAYTE.

(a) A move often denounced and never yet proved wrong; theorists favor P to Kt R3. The defence, however, generally seems in these days to get the best of the Bishop's Gambit; reversing the judgment of a few years back.

(b) A hasty move; but the conductor of twenty games has no time to think. He must now lose a valuable centre Pawn.

(c) Kt takes Q, followed by Kt takes R, of course loses two pieces for the Rook.

(d) The winning move, and showing excellent nerve as well as judgment.

(e) The simple move K to B sq strikes us as even more conclusive. The whole game, however, was admirably conducted by the young Surrey amateur.—Advertiser.

Best Route to Boston.

CANADA ATLANTIC LINE.

ONLY ONE NIGHT AT SEA.

Quickest & Most Direct Route. Low Fares.

The Magnificent Clyde Built Steel S.S.

"HALIFAX,"

Is the Largest, Safest, and Best Furnished and Most Comfortable Passenger Steamship ever placed on the route between Canada and the United States

Sails from Noble's Wharf, Halifax, every Wednesday Morning at 8 O'clock, and Lewis' Wharf, Boston, every Saturday at 12 O'clock.

Passengers by Tuesday evening's train can go on board on arrival without extra charge.

THROUGH TICKETS to New York and all points West.

Baggage checked through from all stations. Through Tickets For Sale by all Agents Intercolonial Railway.

CHIPMAN BROTHERS,

General Agents, Halifax.

Most { PROFIT to the Grocer,
 Economical to the Housewife,

Who Patronizes

Woodill's
German Baking Powder

\$10 Dickens complete in 15 Vols and Webster's Dictionary, FULL SHEEP FOR \$10

Or Webster & Waverly, 12 Volumes \$ 9.75
 Or Webster & Waverly, 6 " 11.50
 Or Webster & Thackeray, 10 " 9.00
 Or Webster & Elliot, 6 " 8.00

Send to any part of the city or to any station on I. C. R. or W. & A. R. Free on receipt of Price, by

Knowles' Bookstore,

A. M. HOARE, Manager,
 Cor. Granville & George Sts.
 HALIFAX, N. S.

LONDON DRUG STORE,

147 Hollis Street,

J. GODFREY SMITH,

DISPENSING CHEMIST,
 Proprietor. Agent for
 Laurance's Axis-Cut Pebble Spectacles and Eye Glasses.

In Stock, the great cure of Neuralgia "Eau Anti-Neuralgique." Chronic cases yield to its curative effects.

Also, in Stock, a line of FANCY GOODS. Dressing Cases, Toilet Sets, in Plush, Leather, &c.