

CHESS.

All communications for this department should be addressed - Chess Editor, Windsor, N. S.

The proprietors of THE CRITIC offer two prizes—to consist of books on Chess—to those subscribers who shall send in the greatest number of correct solutions during the current year. No entrance fee required.

TO CORRESPONDENTS.

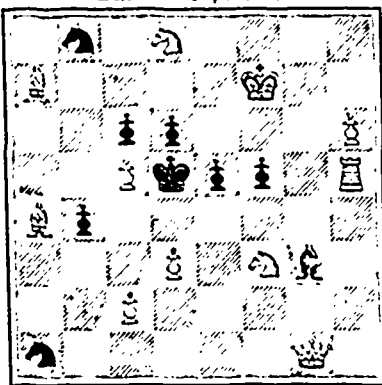
Solution to Problem No. 42.—K to K3.

Solution to Problem No. 43.—B to Q3.

Correct solutions of the above received from Mrs. H. Mosley, J. W. Wallace and W. J. Calder.

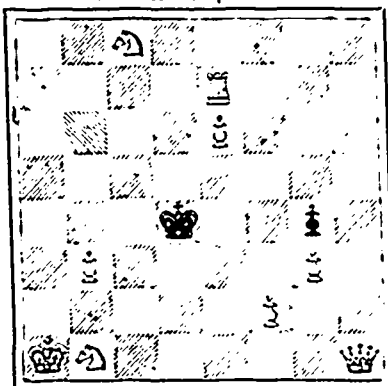
Solution to No. 41 received from A. Bradler, correct, but too late for competition list.

PROBLEM No. 45. "Torquay Directory." BLACK—9 pieces.



WHITE—11 pieces White to play and mate in 2 moves.

PROBLEM 46. "Morning Post." BLACK—2 pieces.



WHITE—9 pieces. White to move and mate in 3 moves.

GAME No. 34.

Played in the Bradford International Tournament.

RUY LOPEZ.

- WHITE. C. von. Bardoleben. G. H. Mackenzie. 1 P to K4 2 Kt to KB3 3 Kt to B3 4 B to Kt5 (b) 5 Castles 6 P to Q3 (d) 7 B takes Kt 8 Kt to K2 (f) 9 Kt to Kt3 10 P to B3 (g) 11 P to Q4 (h) 12 Kt takes P 13 P takes B 14 P to K5 15 Q to B2 (i) 16 RP takes Kt 17 B to Q2 18 QR to B 19 P to B4 20 B to R5 21 R to B3 22 R to R3

- 23 K to B2 24 Q to B5 25 R takes Q 26 P to Kt3 27 B to Q2 28 R takes R 29 R to R6 30 B to Kt4 31 B to B5 32 R takes P 33 B takes R 34 K to K3 35 K to Q3 36 B to Kt6 37 B to B5 38 K to B2 39 B takes P 40 B to K 41 K to B3 42 K to Kt4 43 K to B5 44 K to Kt6 45 P to R4 46 P to R5 47 P to R6 48 P to K6 49 P takes P 50 P to K7

Notes (translated from La Republique Francaise) by M. S. Rosenthal, Paris.

a The proper move. If 3 B to B4, 4 Kt takes P; B takes P (ch) (if 4 Kt takes Kt, 5 P to Q4; B takes P, 6 Q takes B; Q to KB3, 7 B to K3; Kt to B3, 8 Q to Q2; KKt to K2, 9 P to KB4; Castles, 10 B to Q3; P Q3, 11 Castles QR, with the better game.) 5 K takes B; Kt takes Kt, 6 P to Q4; Q to KB3 (ch), 7 K to Kt, Kt to KKt5, 8 Q to Q2 (obviously if 8 Q takes Kt; Q takes P (ch) and mates next move); P to Q3, 9 P to KR3; Kt to R3, 10 Kt to Q5; Q to Q, 11 Q to KKt5, and wins.

b The text move brings back the opening to the Ruy Lopez. The usual attack is 4 P to Q4; B to QKt5, 5 P to Q5; Kt to K2, 6 Kt takes P; P to Q3 (if 6 Kt takes KP, 7 Q to KB3, Kt to KB3, 8 B to KKt5; Kt (K2) takes P, 9 B to QB4; P to QR3, 10 B takes Kt; P takes B, 11 Castles QR, with the advantage.) 7 B to QKt5 (ch); P to QB3, 8 P takes P; Castles, 9 P takes P; B takes P, 10 Kt to KB3 (if 10 Kt to Q3; B takes Kt (ch), 11 P takes B; Kt takes P, 12 B to Q2; Kt takes B, 13 Q takes Kt; B takes P, 14 R to KKt; B to K5, followed by B to KKt3, with the better game); Kt takes P, 11 B to Q2; Kt takes B, 12 Q takes Kt; Q to QR4, 13 B to Q3; Kt to Q4 or QR to QB, with the better game.

c If 4 B to B4, 5 Kt takes P; Kt takes Kt (if 5 B takes P (ch), 6 K takes B; Kt takes Kt, 7 P to Q4; Kt (K4) to Kt5 (ch), 8 K to Kt, Kt to R3 with the better game), 6 P to Q4; B takes P, 7 Q takes B; Kt to KKt3, 8 Castles, followed by P to K5. d The text loses the advantage of the move, as will be seen by the following note. The usual course, 6 Kt to Q5; Kt takes Kt (if 6 B to K2 7 Kt takes Kt (ch), followed P to Q3 with a slight advantage), 7 P takes Kt; P to K5, 8 Kt to K; Kt to K2, 9 P to Q3 would have been better.

e We disapprove of this. Black might have equalized the game by 6 B takes Kt, 7 P takes B; P to Q3, 8 B takes Kt (if 8 B to KKt5; B to KKt5, followed by Kt to K2, with at least an equal game); P takes B, &c.

f Well played, taking immediate advantage of the last weak move. After doubling his adversary's pawn, White posts his knights to the best advantage.

g We disapprove of this also. The proper continuation was 10 Q to K2 (if 10 B to KKt5, 11 P to KR3; B takes Kt, 12 Q takes B, followed by Kt to KB5; and if 10 Kt to K, 11 P to QB3; P to KB4, 12 P takes P; B takes P, 13 Kt takes B; R takes Kt, 14 P to Q4; P takes P, 15 P takes P; B to Kt3, 16 Q to QB4 (ch), followed by Q takes P winning), 11 Kt to KR4, B to KKt5, 12 Kt (R4) to KB5; Q to Q2, 13 Q to K, followed by P to KR3.

h Even now 11 Q to K2, followed up as we have shown, would have been better.

i If 15 Kt takes Kt; P takes Kt, 16 B to K3; B to K3, followed by B to Q4 and with bishops on different colors the game would probably have been drawn. The text move is very well played.

j Weak. The proper move was 16 B to Q2, 17 P to KB4; P to KKt3, 18 B to Q2; R to K, 19 B to QR5; R to QKt, followed by R to Kt 2 and draws.

k Forced, as White threatens 18 B to QKt 4. If 17 P to KB3, 18 P to KB4 would lead to the same position as in the text.

l We disapprove of this. The only proper continuation was 19 R to QKt, 20 B to QR5; R to Kt 2, 21 R to B3; Q to K3, 22 R to Kt 3; KKt to Kt, with an equal game.

m If 21 QR to Kt, 22 R to QKt 3; R to QKt 4, 23 R takes R; P takes R, 24 B takes P, with the better game.

n We should have preferred 24 Q to Q, 25 B to Q2, P to Q R3, followed by P to KR5.

DRAUGHTS-CHECKERS

All Checker communications and exchanges should be addressed to W. Forsyth, 36 Grafton Street, Halifax.

The proprietors of THE CRITIC offer two prizes—to consist of books on Checkers—to those subscribers who shall send in the greatest number of correct solutions during the current year. No entrance fee required.

TO CORRESPONDENTS.

S. C. Hood, Yarmouth.—We cannot recognize the few moves that you give as a solution to Problem 62, as the difficulty of the position is not even touched. The same remark also applies to No. 66.

CORRECTION.

An error occurred in our statement of Problem 65, in that a black man that should have been on 20 was omitted. The problem arises from the following

GAME XVII.

"Second double corner."

Table with 4 columns and 10 rows of numbers representing draughts positions.

This forms Problem 65 in which the corrected position is:—black men 1, 3, 7, 10, 12, 13, 15, 20; white men 17, 19, 22, 23, 24, 25, 26, 27; black to play and win. Again we invite half-a-dozen Nova Scotia players to solve this problem.

SOLUTIONS.

PROBLEM 64.—The position was:—black men 13, 18, 21, kg. 23; white men 12, 25, 30, kg. 16; white to play and draw. Mr. Hood's solution was very good and ingenious, but as he

will see by the one given below, he overlooked an important variation:

Table with 4 columns and 10 rows of numbers representing draughts positions.

VAR. I.

Table with 4 columns and 10 rows of numbers representing draughts positions.

Table with 4 columns and 10 rows of numbers representing draughts positions.

Table with 4 columns and 10 rows of numbers representing draughts positions.

Table with 4 columns and 10 rows of numbers representing draughts positions.

Table with 4 columns and 10 rows of numbers representing draughts positions.

Table with 4 columns and 10 rows of numbers representing draughts positions.

Table with 4 columns and 10 rows of numbers representing draughts positions.

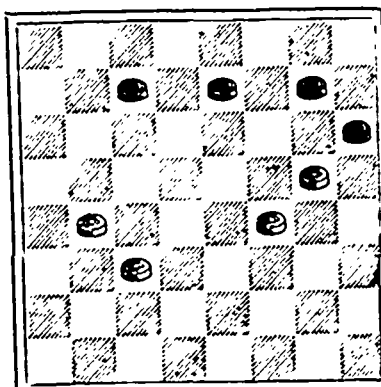
Table with 4 columns and 10 rows of numbers representing draughts positions.

Table with 4 columns and 10 rows of numbers representing draughts positions.

We have received no replies to 66, and will wait till next week before publishing the solution. The position was:—black men 2, 3, 6, kg. 30; white men 12, 13, 22, kg. 11; black to play and win.

PROBLEM 69.

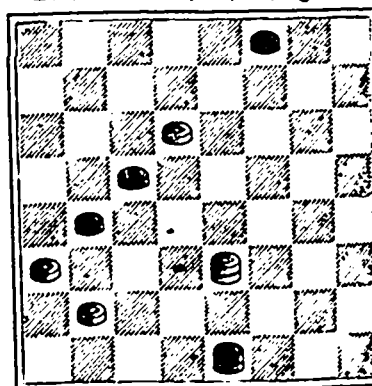
By Isaiah Barker, Cambridgeport, Mass., in Boston Globe. Black men—6, 7, 8, 12.



White men—16, 17, 19, 22. White to play and draw.

PROBLEM 70.

By Wm. Koller, Columbus, Ohio, in Boston Globe. Black men—3, 14, 17, kg. 31.



White men—10, 21, 25, kg. 23. Black to play and draw.