

FLOUR MILLS...

We build Flour Mills, Oat-meal Mills, Corn or other Cereal Mills from basement to attic, and can furnish the power plant as well. Write and ask about the GYRATOR SYSTEM of Milling. Let us know your needs in the mill line and we will furnish you plans and estimates.

WE MAKE Wheelock Engines, Ideal Engines, Gas and Gasoline Engines, Bellows, Water Wheels, Pumps, Flour Mill Machinery, Oat Meal Mill Machinery, Oat Meal Steam Pan Kilns, Wood Working Machinery, Iron Pulleys, Wood Rim Split Pulleys, Shafting, Hangers, Gearing, Friction, Clutch Pulleys, Friction Clutch Couplings etc., Safes, Vaults and Vault Doors.

THE GOLDIE & McCULLOCH CO., Limited
GALT, Ont., Canada.

LEONARD - CORLISS Engines

For all power purposes

The **CORLISS ENGINE** is without question the most economical. Universally acknowledged as the peer of all slow speed engines. All Engines have multiported valves.

The **PEERLESS Self Oiling ENGINE** is the most perfect high speed engine in existence, there is nothing about the engine which has not been a proved success

Boilers for all powers and purposes **Heaters, Pumps.**

CORRESPONDENCE SOLICITED.

E. LEONARD & SONS, - Manufacturers
London, Canada

Montreal, P.Q. Winnipeg, Man. St. John, N.B.

THE WELLINGTON MILLS London, England.

GENUINE EMERY

Oakey's Flexible Twilled Emery Cloth
Oakey's Flint Paper and Glass Paper
Oakey's Emery Paper, Black Lead, Etc

Prize Medal and Highest Award Philadelphia, 1876, for Superiority of Quality, Skilful Manufacture, Sharpness, Durability, and Uniformity of Grain

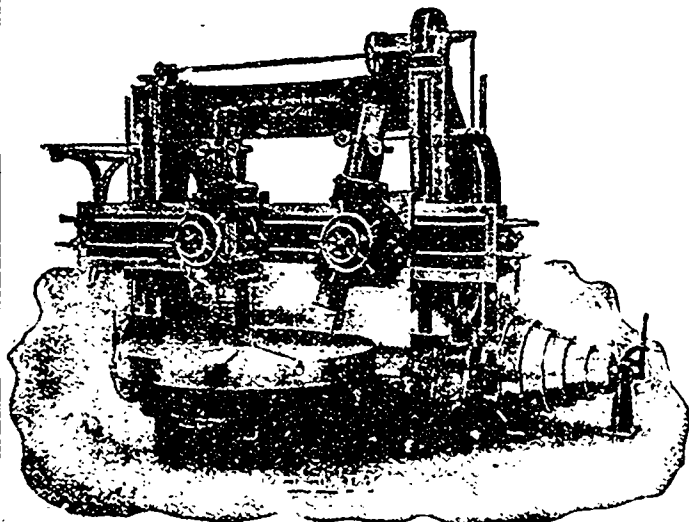
Manufacturers

JOHN OAKEY & SONS, Limited, Wellington Mills, Westminster
Bridge Road, London, Eng.

Enquiries should be addressed to

JOHN FORMAN, - 650 Craig St., MONTREAL

IMPORTANT BORING and TURNING MILLS TO USERS OF



NOTICE—The above mill can be seen at our Works and is of the latest modern type. If you are a buyer please communicate with us. Instant delivery can be given. Full particulars sent on receipt of wire or letter.

WE are ready to delivery from STOCK one of our 84 Boring and Turning Mills, having two regular heads with positive geared feeds each head being entirely independent in all its movements, making it adaptable to either light or heavy work within its range. Every part of the machine is manufactured after the most approved methods and in placing a tool of this kind in your shop you are getting a machine suitable for your wants if you wish to make the most of your boring mill work. A greater range of work can be done on a mill of this character than any other kind of tool, so that the floor space occupied by Bertram mills always pays dividends

THE JOHN BERTRAM & SONS CO., Limited, - Dundas, Ontario