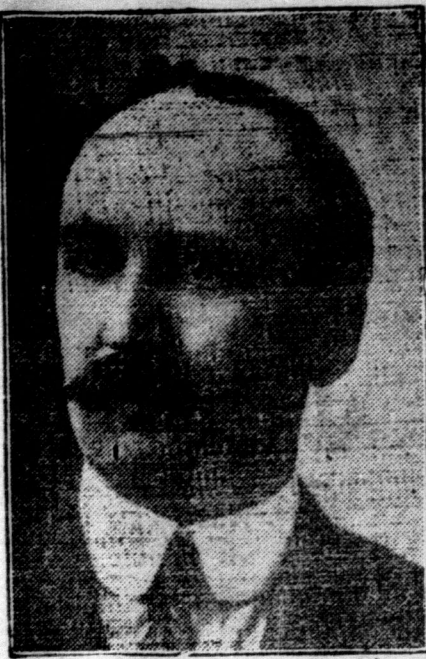


Some Western Ontario Liberals Who Will Support Mr. Rowell in the Legislature



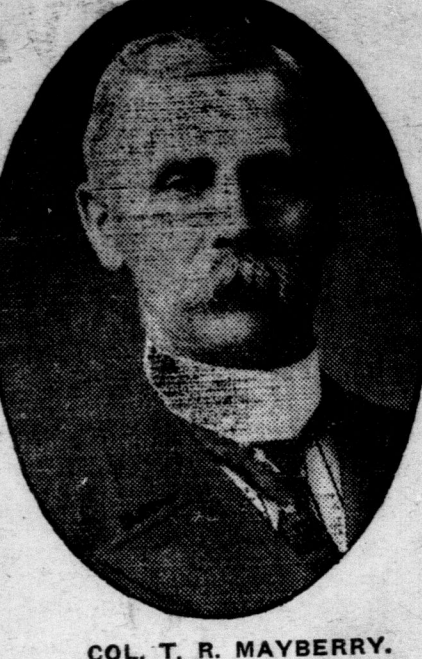
UDNEY RICHARDSON.



SEVERIN DUCHARME.



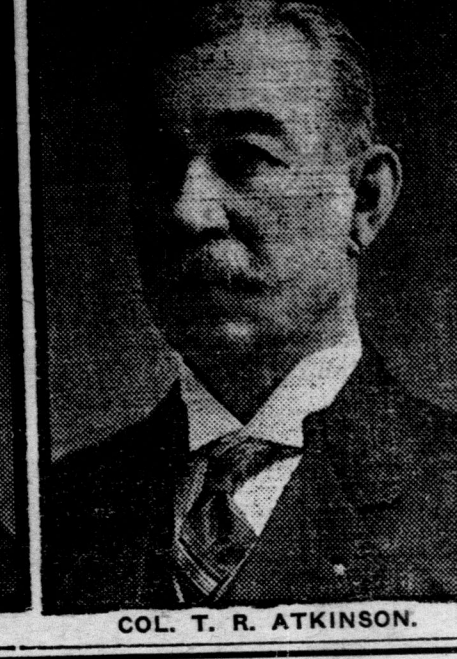
J. C. ELLIOTT.



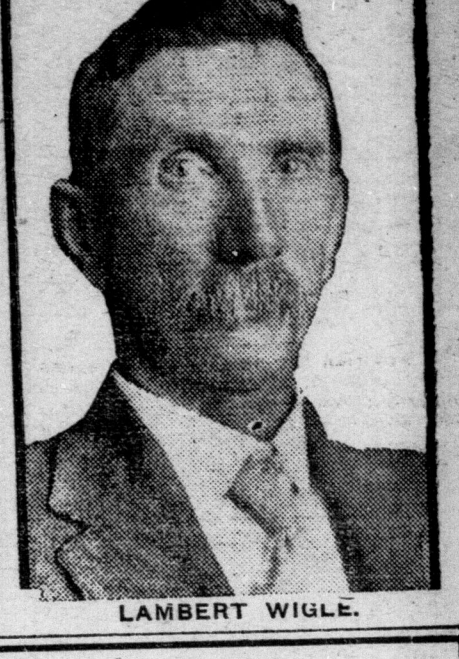
COL. T. R. MAYBERRY.



CHAS. M. BOWMAN.



COL. T. R. ATKINSON.



LAMBERT WIGLE.

LIBERALS GAIN NINE SEATS IN W. ONTARIO

Rowell Will Have Eight New Supporters From This Part.

GERRYMANDER A FAILURE

Essex Goes Solidly Liberal and Government Gains One in Bruce.

Western Ontario sends eight new Liberal members to the Legislature, and really gained nine seats. The whole county of Essex went Liberal, turning out two sitting members and claiming the extra seat, added by the gerrymander, as well. Both the Brant seats were taken by the Liberals. North Middlesex was captured. The Temperance-Liberal carried South Wellington.

Late returns indicate that Wm. McDonald carried North Bruce by a majority of nine, where he had a handicap of 234 stacked up against him by the re-distribution.

Gerrymander Did Not Work. The gerrymander did not do what it

Had No Power Over the Limbs

Locomotor Ataxia, Heart Trouble and Nervous Spells Yielded to Dr. Chase's Nerve Food.

It would be easy to tell you how Dr. Chase's Nerve Food cures locomotor ataxia and derangements of heart and nerves, but it may be more satisfactory to you to read this letter.

Mrs. Thos. Allan, R.F.D., 3, Sombra, Ont., writes: "Five years ago I suffered a complete breakdown, and frequently had palpitation of the heart. Since that illness I have had dizzy spells, had no power over my limbs (locomotor ataxia) and could not walk straight. At night I would have severe nervous spells with heart palpitation, and would shake as though I had the ague. I felt improvement after using the first box of Dr. Chase's Nerve Food, and after continuing the treatment can now walk, eat and sleep well, have no nervous spells and do not require heart medicine. I have told several of my neighbors of the splendid results obtained from the use of Dr. Chase's Nerve Food. 50c a box, 6 for \$2.50, all dealers, or Edmanston, Bates & Co., Limited, Toronto.

was designed for in Western Ontario. It was supposed to gain three seats in Essex County and two in Bruce. It gained one in South Bruce, where W. D. Cargill, who once enjoyed for federal honors, will sit.

The only other gain made by the Government party was in East Lambton, where R. J. McCormick went down before a small majority.

In North Huron, J. J. Anderson, who was shunted out of South Bruce, greatly lessened the majority formerly commanded by A. H. Musgrove.

Charles Bowman, chief whip of the Liberal party, walked off easily with the new seat of West Bruce, where the re-distributors had hived the Liberals by adding select pieces of the three former ridings.

Reaume Out in the Cold. A seat must still be found for Hon. Dr. Reaume, for whom his cabinet colleagues sought to pick out a soft spot by creating the new riding of Windsor.

The victory of J. C. Toimie over the Conservatives Tories was sweeping, and the Legislature will be treated to some splendid oratory as a consequence.

O. E. Fleming, who caught the Conservative nomination away from the Minister of Public Works, was a poor third in the Windsor contest.

South Essex was taken cleanly away from Dr. Anderson by Lambert Wigle. A Conservative majority of 130 was turned to a minority of more than that amount.

Severn Ducharme, who gave Dr. Reaume such a close run in North Essex last election, carried the riding with a good margin.

Mr. Rowell Weathered Storm. North Oxford, where the efforts of the Government and the liquor interest were concentrated in an effort to defeat the Liberal leader, again returned Mr. Rowell, although with a decreased majority.

In Woodstock alone a majority of 600 was piled up against him, but the rural districts made up for this by giving Mr. Rowell over 700 more votes than his opponent, his total majority being 115.

Last election it was 561. From the beginning of the campaign until election day the liquor men carried on a bitter campaign, using every means at their disposal, to oust the man who had pledged himself to abolish the bar.

Mr. Rowell's supporters did their best to rouse public sentiment against him by referring to him as an outsider.

Twelve hundred and forty-two more votes were cast yesterday than in the votes were cast yesterday than in the general election of 1911. Mr. Rowell won his battle against odds, which must have daunted a man less imbued with the righteousness of his cause, and less ready to sink personal and party considerations for the sake of a great principle.

Another Storm Centre. Huron was another storm centre, where strenuous efforts were made to defeat Wm. Proudfoot, the fearless man who has caused Mr. Hanna so much uneasiness in the past two sessions of the Legislature.

The rumblings of the campaign in this riding are still in the air, and some circumstances are to be aired in the courts. Dr. Macklin, the Conservative candidate, and Rev. Joseph Elliott, who was active in his behalf, are to be tried on charges of conspiring to bribe voters. The case was adjourned upon instructions from the Attorney-General's department until today. It is understood that the defence will seek a further adjournment, and

that the case will be tried on Friday of this week.

Despite the gerrymander of the north and west ridings of Middlesex, which the Conservatives cut up like a picture puzzle, both ridings went Liberal. North Middlesex, a Liberal gain, electing John Grievie by a majority of 126, and West Middlesex increasing John C. Elliott's majority to 700. Last election John Grievie was defeated by a Conservative majority of 35 in North Middlesex.

The eastern suburban districts of London in the riding of East Middlesex gave to John McFarlan 260 of the majority of 398, by which he defeated J. W. Laidlaw.

South Waterloo. Buchanan, Hall, Martin. Ayt. 192 81 11. Galt 865 1,165 8. Heslop 161 296 12. New Hamburg 111 228 12. North Dumfries Tp. 208 625 166. Preston 208 625 166. Waterloo Tp. part. 208 625 166. Wilmet Tp. 208 625 166. Majority for Hall, 699.

Windsor. Toimie, Reaume, Fleming. Windsor 1,574 1,357 985. Sandwich 152 202 68. Walkerville 285 358 120. Totals 2,311 1,917 1,168. Majority for Toimie over Reaume, 694; majority over Fleming, 1,060.

South Kent. Ferguson, Henry. Brantford 308 308 308. Brantford Township 144 51 51. Burford Township 321 321 321. Majority for Ham, 321.

West Kent. Brackin, Sulman. Chatham City 228 228 228. Chatham Township 228 228 228. Wallaceburg 48 48 48. Wheatley 56 56 56. Dover Township 81 81 81. Raleigh Township 139 139 139. Carleton Place 139 139 139. Romney Township 19 19 19. Majority for Sulman, 15.

East Elgin. Cornell, Brower. Aylmer 234 234 234. Port Stanley 46 46 46. Springfield 46 46 46. Kilmora 46 46 46. Yarmouth Township 401 401 401. Malahide Township 401 401 401. Bayham Township 238 238 238. South Dorchester 238 238 238. Majority for Brower, 811.

South Grey. Ramage, Jamieson. Hanover 140 140 140. Durham 186 186 186. Dundalk 26 26 26. Neustadt 32 32 32. Benloch 214 214 214. Glenelg 30 30 30. Attamesia 124 124 124. Proton 21 21 21. Argenteau 21 21 21. Normandy 259 259 259. Majority for Jamieson, 974.

South Wellington. Ramage, Jamieson. Guelph City 1,585 1,501 150. Guelph City, maj. 128 128 128. Puslinch Tp. maj. 171 171 171. Guelph Tp. maj. 40 40 40. Pilkington Tp. maj. 70 70 70. Majority for Carter, 83.

North Middlesex. Greive, Lewis. Strathroy 38 38 38. Parkhill 57 57 57. Lucas 69 69 69. Alisa Craig 87 87 87. Adelaide 5 5 5. East Williams 103 103 103. West Williams 71 71 71. Metcalfe 37 37 37. Biddulph 119 119 119. Majority for Greive, 126.

West Elgin. Lumley, Diarmid. St. Thomas 552 552 552. Brantford 16 16 16. West Lorne 35 35 35. Rodney 18 18 18. Sarawak 55 55 55. Dunwich Township 200 200 200. Southwell 20 20 20. Majority for Diarmid, 815.

North Grey. Rodger, Cameron. Sydenham 68 68 68. Derby 16 16 16. Keppel 22 22 22. Usborne 55 55 55. Shallow Lake 525 525 525. Owen Sound 641 641 641. Totals 84 84 84. Majority for Cameron, 557.

Fourth of July Excursion to Detroit. On Saturday, July 4, the Grand Trunk will sell round-trip tickets to Detroit at \$2.75 (children half-fare), good going on train leaving London at 11:35 a.m. and good for return on any train except No. 10, not later than Monday, July 6. Tickets and full information at "Clock Corner," R. E. Ruse, C. P. and G. N. R. June 29, 30, July 1, 2, 3.

Cooling and refreshing Sodas and Ice Cream; just as you like them, at Peters' Shop round the corner. Jvt

RESULTS IN DETAIL

WEST LAMBTON.

	Cowan	Hanna
Sarnia City	228	228
Point Edward	44	44
Petrolia	291	291
Oil Springs	8	8
Courtright	14	14
Sarnia Tp.	30	30
Moore Tp.	112	112
Enniskillen Tp.	125	125
Dawn Tp.	134	134
Sombra Tp.	124	124
Majority for Hanna, 554 (7)		

EAST MIDDLESEX.

	Laidlaw	McFarlan
West Nissouri	253	253
London Tp.	524	524
London City	391	391
North Dorchester	316	316
London (City)	133	133
Total	1,957	2,355
Majority for McFarlan, 398 to the riding, McFarlan's majority was 260.		

WEST MIDDLESEX.

	Elliott	Galbraith
Carleton Place	251	251
Delaware Tp.	12	12
Lobo Tp.	242	242
Ekfrid Tp.	101	101
Mosa	101	101
Glenoe	22	22
Wardsville	16	16
Newbury	26	26
Majority for Elliott, 710.		

SOUTH NORFOLK.

	Pratt (Con.)	Innes (Ind. Con.)
Charlotteville Tp.	180	180
N. Walsingham	152	152
Houghton Tp.	79	79
Port Dover	100	100
Port Rowan	29	29
Woodhouse Tp.	110	110
S. Walsingham Tp.	8	8
Majority for Pratt, 164.		

NORTH NORFOLK.

	Atkinson (Lib.)	Shoehan
Simcoe	194	194
Townsend	602	602
Waterford	103	103
Delhi	131	131
Middleton Tp.	131	131
Windham Tp.	251	251
Majority for Atkinson, 1,248.		

NORTH OXFORD.

	Rowell	Butler
Woodstock	911	1,478
Tavistock	143	105
Embro	575	395
Elmhurst Tp.	150	136
Blainville Tp.	432	305
West Zorra	394	169
East Nissouri	253	245
Total	3,047	2,332
Majority for Rowell, 115.		

SOUTH OXFORD.

	Mayberry	Sinclair
Ingersoll	487	562
W. Oxford	282	177
E. Oxford	105	95
Dereham	21	61
N. Oxford	110	16
Norwich Vh.	110	16
N. Norwich	272	272
Tilsonburg	175	175
Total	331	327
Result in doubt owing to discrepancy in figures in Salford division. Count gives Conservatives 61; they claim 67.		

NORTH WATERLOO.

	Mills	Helst
Berlin	676	676
Waterloo	464	464
Waterloo Township (Ft.)	212	212
Wellesley Township	60	60
Woolwich Township	1,400	1,400
Majority for Mills, 1,400.		

South Huron.

	Zeller	Elber
Essex	17	17
Hensall	75	75
Bayfield	197	197
Stephen	19	19
Usborne	106	106
Hay	117	117
Tuckersmith	117	117
Stanley	106	106
Goderich Township	106	106
Majority for Elber, 320.		

Centre Huron.

	Proddoe	Macklin
Goderich Town	25	25
Glenora	14	14
Seaford	7	7
Grey	141	141
Brussels	41	41
McKillop	58	58
Hullett	27	27
Colborne	316	316
Majority for Proudfoot, 316.		

WINDSOR.

	Toimie	Reaume	Fleming
Windsor	1,574	1,357	985
Sandwich	152	202	68
Walkerville	285	358	120
Totals	2,311	1,917	1,168
Majority for Toimie over Reaume, 694; majority over Fleming, 1,060.			

SOUTH WATERLOO.

	Buchanan	Hall	Martin
Ayt	192	81	11
Galt	865	1,165	8
Heslop	161	296	12
New Hamburg	111	228	12
North Dumfries Tp.	208	625	166
Preston	208	625	166
Waterloo Tp. part.	208	625	166
Wilmet Tp.	208	625	166
Majority for Hall, 699.			

EAST KENT.

	Ferguson	Henry
Brantford	308	308
Brantford Township	144	51
Burford Township	321	321
Majority for Ham, 321.		

WEST KENT.

	Brackin	Sulman
Chatham City	228	228
Chatham Township	228	228
Wallaceburg	48	48
Wheatley	56	56
Dover Township	81	81
Raleigh Township	139	139
Carleton Place	139	139
Romney Township	19	19
Majority for Sulman, 15.		

EAST ELGIN.

	Cornell	Brower
Aylmer	234	234
Port Stanley	46	46
Springfield	46	46
Kilmora	46	46
Yarmouth Township	401	401
Malahide Township	401	401
Bayham Township	238	238
South Dorchester	238	238
Majority for Brower, 811.		

SOUTH GREY.

	Ramage	Jamieson
Hanover	140	140
Durham	186	186
Dundalk	26	26
Neustadt	32	32
Benloch	214	214
Glenelg	30	30
Attamesia	124	124
Proton	21	21
Argenteau	21	21
Normandy	259	259
Majority for Jamieson, 974.		

SOUTH WELLINGTON.

	Ramage	Jamieson
Guelph City	1,585	1,501
Guelph City, maj.	128	128
Puslinch Tp. maj.	171	171
Guelph Tp. maj.	40	40
Pilkington Tp. maj.	70	70
Majority for Carter, 83.		

NORTH MIDDLESEX.

	Greive	Lewis
Strathroy	38	38
Parkhill	57	57
Lucas	69	69
Alisa Craig	87	87
Adelaide	5	5
East Williams	103	103
West Williams	71	71
Metcalfe	37	37
Biddulph	119	119
Majority for Greive, 126.		

WEST ELGIN.

	Lumley	Diarmid
St. Thomas	552	552
Brantford	16	16
West Lorne	35	35
Rodney	18	18
Sarawak	55	55
Dunwich Township	200	200
Southwell	20	20
Majority for Diarmid, 815.		

NORTH GREY.

	Rodger	Cameron
Sydenham	68	68
Derby	16	16
Keppel	22	22
Usborne	55	55
Shallow Lake	525	525
Owen Sound	641	641
Totals	84	84
Majority for Cameron, 557.		

FOURTH OF JULY EXCURSION TO DETROIT.

On Saturday, July 4, the Grand Trunk will sell round-trip tickets to Detroit at \$2.75 (children half-fare), good going on train leaving London at 11:35 a.m. and good for return on any train except No. 10, not later than Monday, July 6. Tickets and full information at "Clock Corner," R. E. Ruse, C. P. and G. N. R. June 29, 30, July 1, 2, 3.

Cooling and refreshing Sodas and Ice Cream; just as you like them, at Peters' Shop round the corner. Jvt

How the Ontario Elections Went

Riding.	Liberal.	Majority.	Conservative.	Majority.	Independent	Majority.
Addington.	G. J. McArthur	8	W. D. Black	1800	J. P. Sanderson (T)	
Algoma.	S. Davidson	321	A. Grigg	400		
Brant, North	J. H. Ham	840	J. W. Westbrook	400	W. T. Rogers (T.)	
Brant, South	C. M. Bowman	7	A. E. Donovan	400		
Brockville	W. McDonald	7	H. C. Green	326		
Bruce, North	J. A. Johnson	144	H. A. Vandusen	657		
Bruce, South	Col. Hamilton		W. D. Cargill	550		
Carleton	M. Lang		R. H. McElroy	550	J. R. Bell (T.)	
Cochrane	R. Mac		R. Douglas	550		
Dundas	R. S. Muir		C. R. McKeown	550		
Durham, East	W. L. Smith		Sir J. P. Whitney	516	F. W. Galbraith (T.)	
Durham, West	W. S. Cornell		J. J. Preston	227		
Elgin, East	C. C. Lumley	425	J. H. Devitt	311		
Elgin, West	S. Ducharme	144	C. A. Brower	815		
Essex, North	L. P. Wigle		F. G. Macdiarmid	307		
Essex, South	W. F. Hogarth		C. N. Anderson	400	W. Spankie	
Port William	Hugh Munro (Acc.)		C. W. Jarvis	534		
Frontenac	C. G. Albery		A. M. Rankin	1000	F. S. Evanson (T.)	
Glengarry	C. A. Roger		G. H. Ferguson	732		
Kenilworth	O. Ramsgo		I. B. Lucas	587		
Grey, Centre	D. Z. Gibson		C. S. Cameron	283		
Grey, North	W. F. Fisher		W. Jacques	465	A. Studholme (L.)	
Grey, South	J. E. Davey		A. W. Nixon	1488		
Hamilton, East	J. A. Hoigate		T. W. Jutton	1000		
Hamilton, West	J. P. McInnis		A. Grant	1007		
Hastings, East	W. Proudfoot	316	R. J. Cook	953	D. V. Sinclair	
Hastings, North	J. C. Anderson		J. W. Johnson	320		
Hastings, West	E. Zeller		H. H. Macklin	463		
Huron, Centre	W. R. Ferguson	463	A. H. Musgrove	15		
Huron, South	R. L. Brackin		H. Eliber	1466		
Kenora	T. F. Harrison		H. A. C. Machin (Acc.)	30		
Kent, East	J. F. McCormick		P. J. Henry	30		
Kent, West	R. L. Brackin		G. W. Sulman	300		
Kingston	T. F. Harrison		A. E. Ross	1466		
Lambton East	J. F. McCormick		B. J. Martin	30		
Lambton West	John Cowan		W. J. Hanna	300		
Lanark North	R. Patterson		R. F. Preston	300	G. Crate (L.)	
Lanark South	D. McLean		F. Hall	460		
Leeds	J. P. Sinclair		R. J. Dargavel	170		
Lennox	M. S. Madole	287	T. G. Carscallen	1496	J. D. Jacobs (L.)	
London	T. Marshall		W. J. Drop	300	W. Wilson (L.)	
London	W. J. Stevenson		Sir C. Ganley	138		
Manitoulin	J. Laidlaw		J. McFarlan	802		
Middlesex East	J. Griev	145	G. Lewis	613	J. McIlvenna	
Middlesex North	J. C. Elliott	710	N. H. Galbraith	405	Dr. Sheahan	
Middlesex West	G. W. Lankin	148	S. H. Armstrong	164	S. Innes (T.)	
Muskoka	H. Marceau	1,848	C. J. Musgrove	200		
Niagara Falls	H. Marceau		H. Morel	600		
Nipissing	T. R. Atkinson		A. C. Pratt	614		
Norfolk North	G. Carlaw	165	S. Nesbitt	218		
Norfolk South	S. Clarke		G. Green	200	J. C. Kilt (T.)	
Northumberland East	J. W. Widdifield		W. H. Hoyle	679		
Northumberland West	W. E. N. Sinclair		C. Valder	619		
Ontario North	C. E. Hurdman	812	N. Champagne	600		
Ontario South	J. A. Pinard	115	E. Ellis	600		
Ottawa East	N. W. Howell		R. E. Butler	236		
Ottawa West	T. R. Mayberry	4	A. J. Sinclair	600		
Oxford	G. F. Richardson		J. Edgar	589		
Parry Sound	A. H. Milner		J. R. Falls	686		
Peel	R. S. Robertson		J. Torrance	600		
Perth North	D. K. Erb		J. Bennewells	600		
Perth South	W. S. Anderson	200	J. Thompson	600		
Peterboro East	G. A. Gillespie		R. J. Soden	689		
Peterboro West	I. L. Matthews		D. Hogarth		G. Evanturel	
Port Arthur	F. A. Senecal		G. Pharrand		W. J. Derby	
Prescott	N. Parliament	90	H. Dempsey	200	R. A. Notman	
Prince Edward	W. Jamieson		J. A. Mathieu	686	Langstaff	
Rainy River	D. Racine	800	E. W. Dunlop			
Renfrew North	F. E. Crawford		T. W. McGarry (Acc.)			
Renfrew South	H. E. Jory		E. J. Laverdure	850	J. A. Wiley (L.)	
Russell	H. Cook		E. Jessop	700		
St. Catharines	L. McLean		W. H. Hearst	230		
Sault Ste. Marie	J. W. McLeod	1000	A. B. Thompson	800		
Simcoe, Central	T. Mageau		H. I. Hart	621	J. Coburn	
Simcoe, East	M. Allard		A. Ferguson	1003		
Simcoe, South	A. W. Boebuck		R. T. Duff	600		
Simcoe, West	C. A. Moes		R. T. Shearer	600		
Stormont	B. E. McKenzie		A. R. Martin	600		
Sturgeon Falls	A. E. Farmer		C. McCrea	1000		
Timiskaming	W. O. McTaggart		T. Magladersy	1700		
Toronto, Northeast (A)	J. C. Allen		R. A. Pyne	8000		
Toronto, Northeast (B)	Allan Dale		M. H. Irish	2300		
Toronto, Northeast (C)	C. H. Maybee		T. Crawford	1400		
Toronto, Northeast (D)	W. H. Price		W. D. McPherson	1200		
Toronto, Northeast (E)	J. Russell		E. W. J. Owens	1200		
Toronto, Northeast (F)	R. S. Mason		T. Hook	1200		
Toronto, Northeast (G)	J. Carew		J. J. Foy	1200		
Toronto, Northeast (H)	C. H. Mills		G. H. Gooderham	1200		
Toronto, Northeast (I)	Z. A. Hall		W. H. Price	275	W. M. McTavish (T.)	
Toronto, Northeast (J)	D. Sharp		J. Russell	500	W. H. Hiltz (T.)	
Toronto, Northeast (K)	J. J. Craig	500	R. Carew	1510	T. Hodgson (Ind. Con.)	
Toronto, Northeast (L)	H. C. Schofield		C. H. Mills	899	E. D. Heist (T.)	
Toronto, Northeast (M)	U. Richardson		Z. A. Hall	863	O. E. Steele (T.)	
Toronto, Northeast (N)	J. McEwing		D. Sharp		L. Cunningham	
Toronto, Northeast (O)	Dr. McQueen		W. C. Chambers	272	S. Carter (T.)	
Toronto, Northeast (P)	E. B. Thompson		A. F. Rykert	500		
Toronto, Northeast (Q)	J. C. Toimie	894	J. T. H. Regan	689	J. O. Reaume	
Toronto, Northeast (R)	A. O. Bruce		G. S. Henry	385		
Toronto, Northeast (S)	J. M. Walton		H. L. Lennox	Acc.		
Toronto, Northeast (T)			F. Godfrey			
Toronto, Northeast (U)						
Toronto, Northeast (V)						
Toronto, Northeast (W)						
Toronto, Northeast (X)						
Toronto, Northeast (Y)						
Toronto, Northeast (Z)						
Toronto, Northeast (AA)						
Toronto, Northeast (AB)						
Toronto, Northeast (AC)						
Toronto, Northeast (AD)						
Toronto, Northeast (AE)						
Toronto, Northeast (AF)						
Toronto, Northeast (AG)						
Toronto, Northeast (AH)						
Toronto, Northeast (AI)						
Toronto, Northeast (AJ)						
Toronto, Northeast (AK)						
Toronto, Northeast (AL)						
Toronto, Northeast (AM)						
Toronto, Northeast (AN)						
Toronto, Northeast (AO)						
Toronto, Northeast (AP)						
Toronto, Northeast (AQ)						
Toronto, Northeast (AR)						
Toronto, Northeast (AS)						
Toronto, Northeast (AT)						
Toronto, Northeast (AU)						
Toronto, Northeast (AV)						
Toronto, Northeast (AW)						
Toronto, Northeast (AX)						
Toronto, Northeast (AY)						
Toronto, Northeast (AZ)						
Toronto, Northeast (BA)						
Toronto, Northeast (BB)						
Toronto, Northeast (BC)						
Toronto, Northeast (BD)						
Toronto, Northeast (BE)						
Toronto, Northeast (BF)						
Toronto, Northeast (BG)						
Toronto, Northeast (BH)						
Toronto, Northeast (BI)						
Toronto, Northeast (BJ)						
Toronto, Northeast (BK)						
Toronto, Northeast (BL)						
Toronto, Northeast (BM)						
Toronto, Northeast (BN)						
Toronto, Northeast (BO)						
Toronto, Northeast (BP)						
Toronto, Northeast (BQ)						
Toronto, Northeast (BR)						
Toronto, Northeast (BS)						
Toronto, Northeast (BT)						
Toronto, Northeast (BU)						
Toronto, Northeast (BV)						
Toronto, Northeast (BW)						
Toronto, Northeast (BX)						
Toronto, Northeast (BY)						
Toronto, Northeast (BZ)						
Toronto, Northeast (CA)						
Toronto, Northeast (CB)						
Toronto, Northeast (CC)						
Toronto, Northeast (CD)						
Toronto, Northeast (CE)						
Toronto, Northeast (CF)						
Toronto, Northeast (CG)						
Toronto, Northeast (CH)						
Toronto, Northeast (CI)						
Toronto, Northeast (CJ)						
Toronto, Northeast (CK)						
Toronto, Northeast (CL)						
Toronto, Northeast (CM)						
Toronto, Northeast (CN)						
Toronto, Northeast (CO)						
Toronto, Northeast (CP)						
Toronto, Northeast (CQ)						
Toronto, Northeast (CR)						
Toronto, Northeast (CS)						
Toronto, Northeast (CT)						
Toronto, Northeast (CU)						
Toronto, Northeast (CV)						
Toronto, Northeast (CW)						
Toronto, Northeast (CX)						
Toronto, Northeast (CY)						
Toronto, Northeast (CZ)						
Toronto, Northeast (DA)						
Toronto, Northeast (DB)						
Toronto, Northeast (DC)						
Toronto, Northeast (DD)						
Toronto, Northeast (DE)						
Toronto, Northeast (DF)						
Toronto, Northeast (DG)						
Toronto, Northeast (DH)						
Toronto, Northeast (DI)						
Toronto, Northeast (DJ)						
Toronto, Northeast (DK)						
Toronto, Northeast (DL)						
Toronto, Northeast (DM)						
Toronto, Northeast (DN)						
Toronto, Northeast (DO)						
Toronto, Northeast (DP)						
Toronto, Northeast (DQ)						
Toronto, Northeast (DR)						
Toronto, Northeast (DS)						
Toronto, Northeast (DT)						
Toronto, Northeast (DU)						
Toronto, Northeast (DV)						
Toronto, Northeast (DW)						
Toronto, Northeast (DX)						
Toronto, Northeast (DY)						
Toronto, Northeast (DZ)						
Toronto, Northeast (EA)						
Toronto, Northeast (EB)						
Toronto, Northeast (EC)						
Toronto, Northeast (ED)						
Toronto, Northeast (EE)						
Toronto, Northeast (EF)						
Toronto, Northeast (EG)						
Toronto, Northeast (EH)						
Toronto, Northeast (EI)						
Toronto, Northeast (EJ)						
Toronto, Northeast (EK)						
Toronto, Northeast (EL)						
Toronto, Northeast (EM)						
Toronto, Northeast (EN)						
Toronto, Northeast (EO)						
Toronto, Northeast (EP)						
Toronto, Northeast (EQ)						
Toronto, Northeast (ER)						
Toronto, Northeast (ES)						
Toronto, Northeast (ET)						
Toronto, Northeast (EU)						
Toronto, Northeast (EV)						
Toronto, Northeast (EW)						
Toronto, Northeast (EX)						
Toronto, Northeast (EY)						
Toronto, Northeast (EZ)						
Toronto, Northeast (FA)						
Toronto, Northeast (FB)						
Toronto, Northeast (FC)						
Toronto, Northeast (FD)						
Toronto, Northeast (FE)						
Toronto, Northeast (FF)						
Toronto, Northeast (FG)						
Toronto, Northeast (FH)						
Toronto, Northeast (FI)						
Toronto, Northeast (FJ)						
Toronto, Northeast (FK)						
Toronto, Northeast (FL)						
Toronto, Northeast (FM)						
Toronto, Northeast (FN)						
Toronto, Northeast (FO)						
Toronto, Northeast (FP)						
Toronto, Northeast (FQ)						
Toronto, Northeast (FR)						
Toronto, Northeast (FS)						
Toronto, Northeast (FT)						
Toronto, Northeast (FU)						
Toronto, Northeast (FV)						
Toronto, Northeast (FW)						
Toronto, Northeast (FX)						
Toronto, Northeast (FY)						
Toronto, Northeast (FZ)						
Toronto, Northeast (GA)						
Toronto, Northeast (GB)						
Toronto, Northeast (GC)						
Toronto, Northeast (GD)						
Toronto, Northeast (GE)						
Toronto, Northeast (GF)						
Toronto, Northeast (GG)						
Toronto, Northeast (GH)						
Toronto, Northeast (GI)						
Toronto, Northeast (GJ)						
Toronto, Northeast (GK)						
Toronto, Northeast (GL)						
Toronto, Northeast (GM)						
Toronto, Northeast (GN)						
Toronto, Northeast (GO)						
Toronto, Northeast (GP)						