

**CARTRIDGES for All.**



**Nitro Club,  
Remington,  
Smokeless,  
New Club.**

**William Nosworthy**  
"If it's mechanical we have it."  
LIMITED.

**FIRE INSURANCE!**

**QUEEN INSURANCE CO. of America**  
— AND —  
**THE GREAT AMERICAN INS. CO.**  
OF NEW YORK.

Capital practically unlimited. The largest number of Policy holders in Newfoundland.  
**Absolutely no trouble when a loss occurs.**  
PHONE 653. P. O. BOX 782.  
**GEO. H. HALLEY, Agent,**  
ADRAIN BUILDING, 165 WATER STREET.  
Ine911



Our Custom Made Clothes are individual in style, and at all times possess an appreciable advantage in fabric, tailoring, finish, fit and fashion.

**W. P. SHORTALL,**  
THE AMERICAN TAILOR,  
**300 Water Street.**

PHONE—477. P. O. BOX—445.

**NEW SHIPMENT!**

We always carry fresh supplies of the following:—

Corona, Moirs', Fry's, Cadbury's, Rowntrees, Peters, Nestles, Savoy, Grey's, Laurel, Lorraine, Farley's Confectionery. Local and imported One Cent Goods.

**P. F. FEARN & CO., Ltd.,**  
Box 667. 200 Water St. Phone 734.

**FORD**

Service as we understand it means giving you what you want, as you want it, when you want it.

**TRY US**

**DODD'S GARAGE, LTD.**

Ford Distributors for Newfoundland,  
Tel. No. 318. Catherine St., St. John's.  
Ine411

A PROMINENT AMERICAN MILLIONAIRE SAYS:  
"Early in my business career I made it a rigid rule to invest a third of my net yearly income in Life Insurance. Now, at age 55, and with an estate of a few million dollars, I can truthfully say that the third I invested each year in Life Insurance to-day constitutes the greater and best part of my estate."  
YOU need more Life Insurance NOW. Let us "fit" you with the proper kind of Policy.

**Crown Life Insurance Co. of Canada**  
CYRIL J. CAHILL,  
Law Chambers, St. John's.  
Manager for N.S.

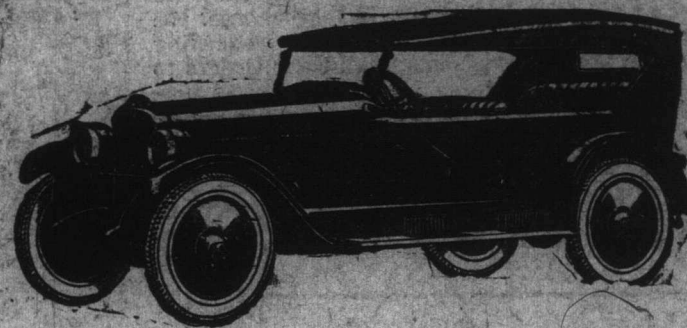
Advertise in The Evening Telegram

**New Series Chalmers Six**

A Solid year of engineering effort by the new Chalmers organization has brought the New Series Chalmers Six to a remarkably high state of performance perfection.  
At \$2300.00, and in the present market, the sound investment value of the Chalmers Six is strikingly plain.

All Models equipped with Steel Wheels and Cord Tires

**MARSHALL'S GARAGE,**  
WATER STREET WEST.



**The CHALMERS SIX**

**Now Landing**

ex S.S. Kriton

**A Choice Cargo**  
**NORTH SYDNEY**  
**Screened COAL**

**Mfld. Coal & Trading Company, Ltd.**  
At the premises lately occupied by Alan Goodridge & Sons.

**A NEW PIANO,**

At a Moderate Price.  
SEE OUR WINDOW.

**A Good 2nd Hand Player Piano**  
**Price: \$500.**

The "Emerson" Piano,  
being imported for nearly half century.

**Charles Hutton.**

**Spare Time Study.**

No matter if your schooling was limited—if you do have to work long hours. If you really want to be prepared when your chance comes. THE INTERNATIONAL CORRESPONDENCE SCHOOLS will prepare you in your spare time. Terms on application to

**ARTHUR R. STANSFIELD, Representative,**  
Box 1018. 178 Water Street.  
Ine211

**Morey's Coal is Good Coal!**

In Stock, Best Grades of  
**North Sydney Screened, Scotch Household and Anthracite**  
**COAL.**

**M. MOREY & Co., Ltd.**

**Gravensteins!**

To-day Ex. S. S. Silvia.  
**N. S. GRAVENSTEIN APPLES.**  
"EARLY WILLIAMS."  
**CAL. GRAVENSTEINS—Boxes 150's.**  
**CAL. ORANGES—216's and 252's.**

**GEORGE NEAL,**  
Limited.

**Have You Seen the JEWETT CAR?**

**THE JEWETT IS PAIGE BUILT.**

The new Jewett is of Paige conception, designed and built by Paige engineers and mechanics in the Paige shops. From its Paige origin the Jewett inherits those unmistakable marks of Quality, characterizing the work of a group of men, who for ten years past, have been building the fine six-cylinder cars, bearing the Paige monogram.

Let us demonstrate to you its remarkable power and quality—5 passenger touring—\$2200.00—\$2850.

**Anglo-American Garage,**  
**JOS. COCKER,**

Paige Distributor.

**You have Pictures to Frame?**

We have the correct mouldings to frame them. No need to worry about what kinds of Moulding you'll require for your pictures if you send them to us for framing. We can frame, correctly and distinctively, anything from the smallest photograph to the largest engraving.

Send along your pictures to us and we guarantee to delight you with our prompt and perfect workmanship, and our reasonable prices.

**U. S. Picture & Portrait Co.**

— St. John's. —

**Specials for This Week!**

Just Arrived a New Shipment of  
**Leatherette Coats.**  
Lowest Prices.

**I. LEVITZ, 252 Water St.,**  
Opp. Dicks' & Co.

**Reid-Newfoundland Co., Limited**

**Sunday Excursion To Kelligrews.**

Excursion train will leave Depot at 2.30 p.m. on Sunday for Kelligrews. Returning, will leave Kelligrews at 8.30 p.m.

**Reid-Newfoundland Co., Limited**

**Conception Bay Service!**

**S.S. "PAWNEE"**

CHANGE OF SCHEDULE EFFECTIVE MONDAY, AUG. 21st AND UNTIL FURTHER NOTICE.

**LEAVES CARBONAR** for Port of Bell Island on Monday, Wednesday, Friday, 7.30 a.m.  
**LEAVES HARBOR GRACE** for Port of Bell Island on Tuesday, Thursday and Saturday, at 7.30 a.m.  
**BELL ISLAND** every Sunday, at 11 a.m. for Port of Carbonar.  
**ARRIVES PORTUGAL COVE** every morning, except Sunday, at 8.15 a.m.  
Passengers connect at Port of Carbonar with motor cars for St. John's.  
**LEAVES BELL ISLAND** every day, except Sunday, for Port of Carbonar, at 2 p.m.  
**LEAVES PORTUGAL COVE** for Carbonar via Bell Island on Monday, Wednesday and Friday, at 4.30 p.m.  
**PORTUGAL COVE** for Harbor Grace via Bell Island on Tuesday, Thursday and Saturday, at 4.30 p.m.  
**LEAVES PORTUGAL COVE** every evening, except Sunday, for Bell Island, at 4.30 p.m.  
N.B.—Motor cars leave rear Post Office, St. John's, at 4.45 p.m. every day, except Sunday, taking passengers to Cove for Bell Island, Carbonar (Mon., Wed., Fri.) and Harbor Grace (Tue., Thurs., Sat.).  
S.S. "Pawnee" leaves Port of Carbonar every evening (except Sunday) for Carbonar and Harbor Grace, at 4.30 p.m.  
**BELL ISLAND S. S. CO., LTD.**  
**GEO. NEAL, LTD.,** Agents, St. John's.  
Phone 11.  
**J. B. MARTIN,** Agent, Bell Island, C.B.  
Aug 19, 1911

**Farquhar Steamship Line**

PASSENGER AND FREIGHT SERVICE,  
ST. JOHN'S TO NORTH SYDNEY,  
STEEL STEAMSHIP "SABLE I"

From St. John's every Tuesday, 10 a.m.  
From North Sydney every Saturday, 2.30 p.m.  
One way \$27.00—First Class only—including all meals and berth.  
Freight accepted and rates quoted to all points.  
**FARQUHAR TRADING CO., HARVEY & Co., Ltd.**  
Agents, North Sydney. Agents, St. John's, N.F.  
Aug 28, 1911

**Furness Line Sailing**

From Liverpool to St. John's to Halifax to Boston to St. John's to Halifax to Boston to Halifax to St. John's to Liverpool.  
S. S. SACHEM—  
July 19th July 27th July 30th Aug. 7th Aug. 12th Aug. 19th  
S. S. DIGBY—  
Aug. 3rd Aug. 11th Aug. 14th Aug. 21st Aug. 26th Aug. 31st  
These steamers are excellently fitted for cabin passengers. Passengers for Liverpool must be in possession of Passports. For rates of freight, cargo, and other particulars, apply to:

**Furness Withy & Co., Limited**  
WATER STREET EAST.

**FOR SALE!**

The following property on very easy terms: One House on William Street, immediate possession; two Houses, Flower Hill; one House, Lemarchant Road, Freshwater Road; New Gower Street, Cross Road, Bond Street, Theatre Hill, Quidi Vid Road, William Street, Victoria Street, Cochrane Street, Hamilton Avenue, Mundy Pond Road, Brazil's Square, Pleasant Street, York Street; two Houses Harvey Road, Hayward Avenue; one Bungalow, Torbay Road; also one on Sudbury Street.

For further particulars, apply to  
**J. R. JOHNSTON,**  
Real Estate Agent, 307, Prescott Street.  
Ine20 and 12