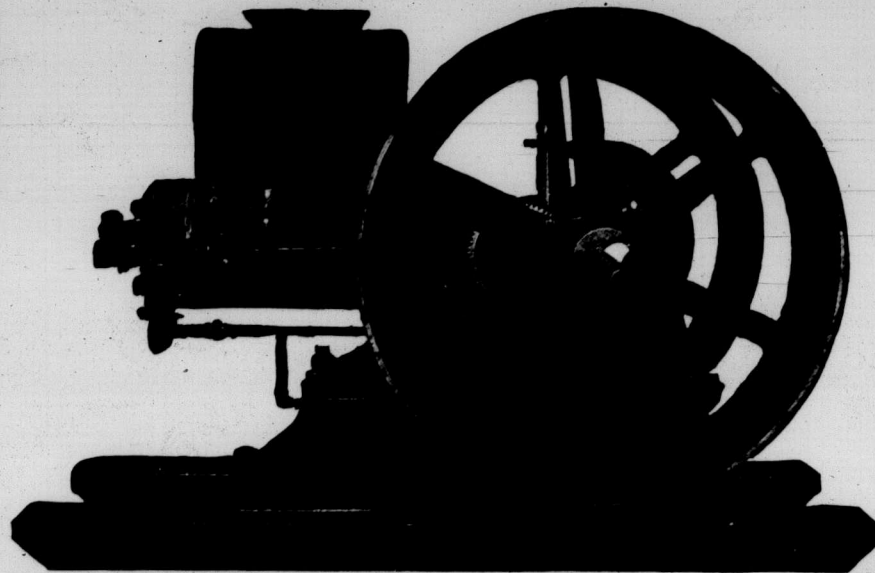


# YOUR OPPORTUNITY TO SAVE MONEY AND SOLVE YOUR LABOR PROBLEMS

Let us prove to you that you cannot afford to do without a gasoline engine. Buy your engine and power equipment DIRECT FROM US as we can save you, on the purchase price of an engine alone, a difference that will enable you to buy a Wood Saw and Grain Crusher for the prices you have to pay agents. You can test any of these engines at your own work for 30 days before you need pay for it.

**30 Days' Free Trial**

- 1 Horse Power \$36.25
- 1½ Horse Power \$42.50
- 3 Horse Power - \$87.50



**Five Years' Guarantee**

- 4½ Horse Power \$130.00
- 7 Horse Power - \$197.50
- 8 Horse Power \$287.50

Shipped Complete and Ready to Run.

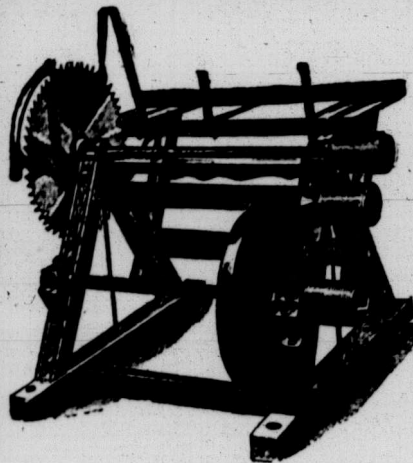
**The RIGHT ENGINE at the RIGHT PRICE**

All Sizes up to 25 Horse Power, Stationary and Portable.

**THE ENGINE YOU WANT.** We know exactly what the farmer's gasoline engine must do, and we have the engine that will do it—perfect in quality, power and construction and so simple that any man can operate it without any difficulty. We offer no makeshifts nor compromises as this engine has been tested in operation with all the leading makes of engines on the market, and the result of these tests enables us to sell you this engine on the thirty days' free trial and five years' guarantee. Users of gasoline engines are paying from one-third to one-half more than actual value for engines bought through the wasteful out-of-date "agent-and-middleman" method. Never was there a greater opportunity for us to serve our customers than in gasoline engines. Never has there been a better chance for us to demonstrate the practical value of our "factory-to-farm" method of merchandising. WRITE US TODAY FOR CATALOG.

## Saw Your Wood

**A POLE SAW FRAME FOR \$21.00**



This illustration represents our Pole Saw Frame for sawing cord wood and long poles of every description. Mandrel is 4 ft. 1 in. with 1½ saw arbor, balance wheel 100 lbs., pulleys 5 in. diameter, 6 in. face. This frame will take saws from 20 to 30 inches. It is made of selected hard wood, strongly mortised and bolted and is without doubt one of the strongest and most satisfactory saw frames on the market. The shipping weight

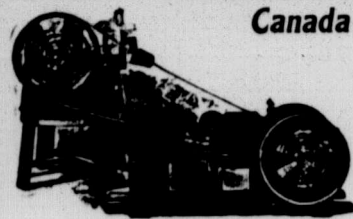
of this saw frame is 425 lbs. The following prices include saw blades.

20 in. ....	\$25.50	26 in. ....	\$28.50
22 in. ....	26.50	28 in. ....	29.50
24 in. ....	27.50	30 in. ....	30.50

We can supply the ordinary cord wood saw frame for \$18.00

You can buy any article listed here without a cent in advance as we will ship C.O.D. on receipt of your order

## Canada Power Washing Outfit



cuts out the hard work and drudgery of wash day and makes it a pleasure. Outfit complete, including 1½ H.P. engine, belt and power washer, complete with wringer \$65.00. Shipped you on 30

days' free trial to test to your entire satisfaction. We can supply hand washing machines from \$4.00 up. This engine will run the churn, fanning mill, cream separator, grinder and pump as well. Write for free catalog.

**TEAR OFF THIS COUPON and mail today to**  
C. S. JUDSON CO. LTD., 181 Market St., WINNIPEG, MAN.

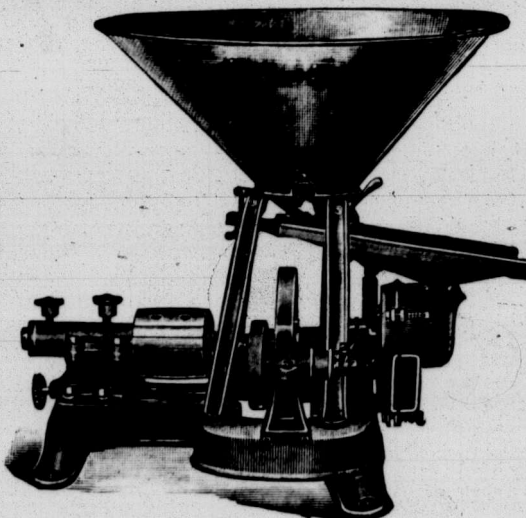
Gentlemen,—Send me full particulars of your Gas Engines and power equipments. I need an engine for .....

(State work you want to do)

NAME.....

ADDRESS.....

## Save ¼ of Every Dollar



Every mouthful of unground feed your stock eats means a waste of 25%. Would you let that amount rot in the field unharvested? No? Then grind it on one of our "Monarch" or "Cyclone" grinders, with one of our engines.

Illustration represents our improved "Cyclone" grinder, ball bearing, self oilers, shake screen feed, lever for throwing out of gear when starting, large hopper, low frame, relief springs, reversible burrs, one of the fastest and best grinding mills made. Capacity of grinders depends entirely upon H.P. used,—3 to 6 bushels per hour per horse power being capacity.

7 in. grinder. ....	\$29.50	10 in. grinder. ....	\$38.50
8 in. grinder. ....	35.00	12 in. grinder. ....	48.50

We have grinders in 3 different types and suitable for engines of 1½ H.P. up. Catalog free on request.

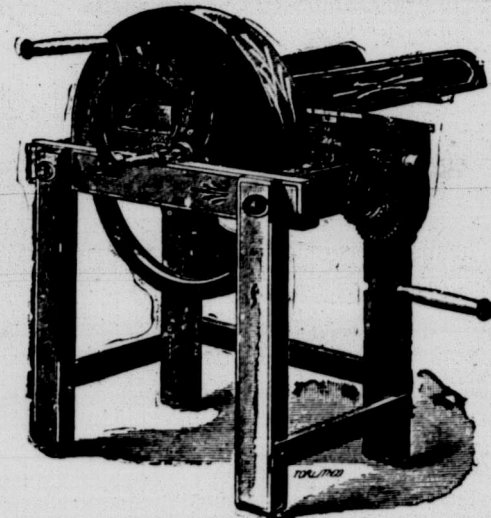
## How Much Power Do I Need?

It wont cost you a cent to get an absolutely accurate answer to this or any other question connected with power for the farm. Just write and tell us what work you have for the engine to do, and our engineers will tell you exactly what power you require and how much it will cost you. If a 4½ horse power engine will do your work as well as 7-horse, our engineers will tell you so. Tell us what your needs are. Write to day and let us solve your power problems. We are ready to give you expert advice without one cent of cost to you.

Let our "Handy Boy" engine, 1½ H.P., pump your water: always ready and willing to work: costs only a few cents per day to run and is the greatest labor saver on the farm. Outfit complete, including engine with auxiliary speed pulley for slow running machines, like cream separators, fanning mills: one belt 2 in., and our patent pump jacks, only \$47.50

**C. S. JUDSON CO. LTD.**  
WINNIPEG MANITOBA

## Chop Your Feed

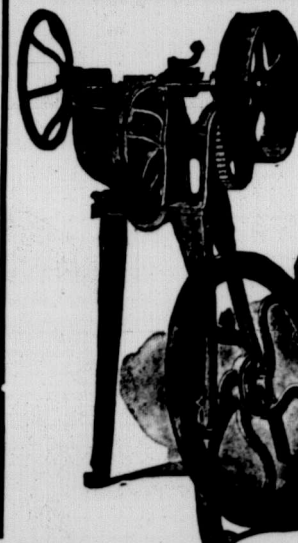


### Feed Cutters and Blowers

These we have in 3 different styles. This illustration represents the combination hand and power feed-cutter, which is one of the most popular machines on the market as it has tempered tool steel knives, is very light running, makes a clean and perfect cut, cuts 3 different lengths and can be operated by hand or with engines of 2 H.P. and up. Equipped with pulley 12 in. diameter, 4 in. face and 2 hand cranks. Price of machine complete \$26.50. Guaranteed under equal conditions to do more and better work: size for size and to last as long as any other feed-cutter made. Write for special catalog of larger sizes.

### Humphrey Green Bone Cutter

This is a very fast cutting and easy running bone cutter and the open hopper allows the bone to drop into the machine without having to cut the bone into small pieces with an axe. Cutters are made of the best tool steel tempered very hard. The No. 1, suitable for hand power, \$16.50. No. 2½, same as illustrated, suitable for hand or power use, \$21.00.



Catalogs of Pumps, Harness, Hardware sent free on request to your address.