

Better Farm Homes

By Professor L. J. SMITH, Dept. of Agricultural Engineering,
Manitoba Agricultural College

LATE last summer the Manitoba Agricultural College, in co-operation with the Manitoba Department of Agriculture, inaugurated a Better Farm Homes Competition, open to the farm women of the province. It was hoped by this method to learn what type of home the housewife

plans are being prepared by a capable draftsman under the direction of the Department of Agricultural Engineering, which department is also getting out a complete bill of material for each plan.

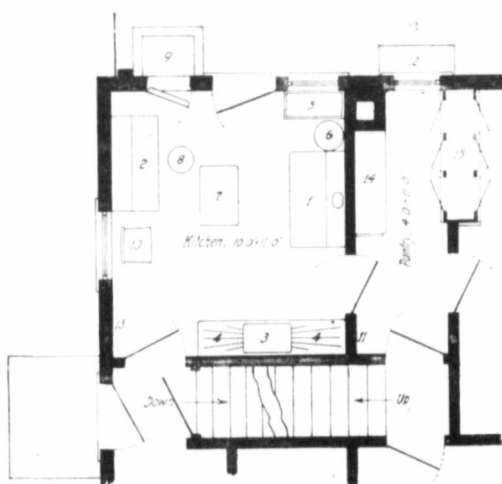
The Manitoba Agricultural College House Plan "A" is the



on the farm actually needed for our western conditions; for who can tell what is necessary in the farm home better than the women whose life work is in these houses?

Though it was during the busy season, over one hundred and thirty women applied for cross-sectional drawing paper and directions for entering the compe-

first of the prize plans. It was submitted by Mrs. R. Robbins, of Glenella, Manitoba, and is the smallest of the houses, being only 26 x 28 feet, yet the house contains four rooms on the first floor and four bedrooms and a bathroom on the second floor. It was necessary to make a few minor changes from the original to allow for stair-space, etc.



PLAN SHOWING LAYOUT OF KITCHEN

Copyrighted, May, 1917.

- | | | |
|----------------|-----------------------|-----------------------------|
| 1 Range | 4 Hot water tank | 11 Collapsible dinner wagon |
| 2 Cabinet | 5 Movable small table | 12 Dog shelf |
| 3 Sink | 6 Dishwashing stool | 13 Brooms |
| 4 Drain boards | 7 Refrigerator | 14 Shelves |
| 5 Feet | 8 Chair | 15 Cupboards |

tion. Sixty-three plans were submitted and, of these, six were selected by the judges as being the best; six equal prizes of \$25 each in cutlery or silverware being given.

Complete working drawings and specifications of these prize

Figure 1 shows the exterior. It has a neat, compact appearance and represents a simple and pleasing type of construction, free from the ornamentation common to transient styles of architecture. Being nearly square it has a hip roof. The front hall,

Buy a Mower

that will cut any crop that grows. You get best results when using a

Frost & Wood Mower and Rake

For the last 20 years Frost & Wood Mowers have made a success of cutting the toughest kinds of "wire grass," "prairie wool" and "old bottom" found in this country. Get one this season and you are assured of harvesting your crop without delays and with least possible labor.

The Frost & Wood Mower

Simple and easily operated, yet sufficiently strong for the toughest propositions you can put it up against. Light in draft because of high grade roller bearings in all working parts. One of its best features is the quick-acting, substantial Internal Gear arrangement of the driving mechanism. No "flying start" required. The machine begins cutting at the first forward motion of the horses.

The Frost & Wood Rake

Built on a strong, heavy, angle-steel frame. Parts are rivetted, not bolted, so they cannot shake off. Teeth are special high grade spring steel, every one carefully tempered and tested. The hardest work and roughest usage won't pull the Frost & Wood Rake out of shape. Fitted with automatic dumping device.

Write to-day for folder on Frost & Wood Mower and Rake, Side Delivery Rakes, Hay Loaders, etc. You'll get some profitable pointers on Haymaking.

Cockshutt Plow Co., Limited

Winnipeg
Regina
Saskatoon
Calgary



E-B (GEISER) THRESHER

Here is a small thresher with big capacity. Small enough for your own use and large enough for profits in custom work. Equipped with Wind Stack and Feeder, can be operated by light tractor. We manufacture all sizes and styles of threshers. Write for catalog. Look for the E-B trade mark. It's your guide to better, more profitable farming. Ask for E-B literature.



Emerson-Brantingham Implement Co. (Inc.), Regina, Sask., Canada
Please send me free literature on articles checked:
Plows
Harrows
Cultivators
Mowers
Spreaders
Drills
Planters
Hay Tools
Listers
Gas Engines
Wagons
Ropes
Auto Tractors
Potato Machinery
Saw Mills
Rolling Presses
E-B 12-20 Tractor
Emerson Model 12-20
Big Four 20" Tractor
Ropes 40" Tractor
Emerson Plows
Steam Engines
Threshers
Cane Crushers

Name _____
Address _____

CLASSIFIED

BROME AND WESTERN RYE GRASS SEED—Mixed about half and half, best quality procurable, well cleaned and sacked in 30 lb. and 100 lb. bags. This seed has been grown, threshed and cleaned by grass seed specialists; it is plump and well matured, without damage by frost and cleaned with the most up-to-date machinery. Warehouse located on track; shipments made same day as orders received. Price, 12 cents lb. The best time for seeding is high at hand. Write for pamphlet giving full information regarding tame hay or pasture, methods of seeding, etc. The Hallman Grass Seed Growers, Benton, Alta. 527

WANTED—A position as Sales or Collection Manager by young man with fifteen years' experience in Eastern and Western Canada, as office Clerk, Collector, Salesman, Collection Manager and Sales Manager in farm, threshing and road making machinery, also automobiles. Will consider offers as District Representative for reliable Automobile or Loan Company. Address Box 3164 Canadian Thresherman and Farmer.

FREE FOR SIX MONTHS—My special offer to introduce my magazine, "Investing for Profit." It is worth \$10 a copy to anyone who has not acquired sufficient money to provide necessities and comforts for self and loved ones. It shows how to become richer quickly and honestly. Investing for Profit is the only progressive financial journal and has the largest circulation in America. It shows how \$100 grows to \$2,200; write now and I'll send it six months free. H. L. Barber, 496 20 W. Jackson Boulevard, Chicago.