

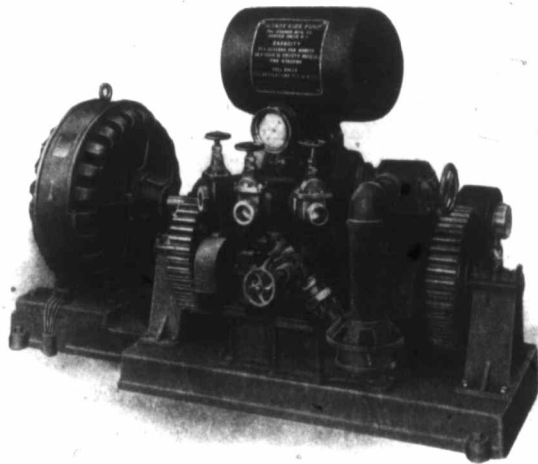
*Canadian Westinghouse  
Company, Limited  
Hamilton, Ontario*

---

*December, 1908*

*Circular No. 1118*

---



WESTINGHOUSE TYPE CCL MOTOR GEARED TO ROTARY FIRE PUMP

*Type CCL Polyphase Induction Motors*

*Squirrel Cage Rotors—Constant Speed*