

Get "EATON" prices on things. Leave name and address in copy Department and a man will call for measurements.

# EATON'S DAILY STORE NEWS

Write the "House-furnishing Shop-pers," if in doubt, for suggestions and prices regarding spring redecorating.

1869

GOLDEN JUBILEE

Store Closes Saturdays at 1 p.m., Other Days 5 p.m.  
"Shorter Hours" "Better Service"

1919

Spring's Call for New Things Grows Most Insistent

## As Easter Draws Near

It's a Call That Is Easily Answered in the Men's Wear and Clothing Section

For, There One May Choose From the Newest of the New in Suits, Overcoats, Shirts, Hats, Ties, Etc., for Either Formal, Informal or Business Wear.



### The Showing of Suits and Coats

For Formal and Informal Wear is Also Extensive

At \$57.50 are Hand-tailored Full Dress Suits of a fine all-wool imported Barthele cloth, with corded silk-faced lapels, silk lining and vests and trousers trimmed with soutache braid.

At \$38.00 is a Soft-finished All-wool Llama Cloth Morning Coat, silk lined throughout and hand-tailored. Vests are lapelled collared, and have silk-covered buttons—for men or young men, regular sized or stout men.

At \$50.00 is a Prince Albert Suit of "EATON Brand" hand-tailored unfinished black worsted; has notch collar on vest.

At \$35.00 are All-wool Black Worsted Serge Suits, in three-button, single-breasted conservative style. Vests close with five buttons. Trousers have two side, two hip and a watch pocket. Sizes 36 to 44.

At \$35.00 are EATON-made Blue Worsted Serge Suits, in single-breasted, semi-form-fitting style, with vent at back. Shapely lapels and high-cut vests, trousers with or without cuffs. For young men, at the same price and of the same cloth are suits in three-button, single-breasted, form-fitting style. With natural shoulders, high waist effect. Sizes 34 to 39.

#### Suits for Young Men



Illustrating a young man's three-button, single-breasted sacque, all-round belted style, with patch pockets—of all-wool imported worsted in dark brown and pin check, showing a purple and green stripe. Price, \$35.00.

Still another at the same price is of an all-wool light grey tweed, in two-button, form-fitting style, slash pockets and long, rolling lapels. Trousers are straight-cut and with or without cuffs.

At \$35.00 is an all-wool lawn homespun, showing a green speck, a one-button, form-fitting style, with slash pockets and soft roll notch lapels.

Another at the same price is of cassimere-finished steel grey wool and cotton mixed tweed, in one-button, form-fitting style with slash body pockets, and patch breast pockets. High waist and flare skirt. Trousers are straight cut and have cuffs.

Young man's two-button, single-breasted worsted suit, with flare skirt, soft roll notch lapels, natural shoulders, two outside breast pockets with flaps; of a cassimere-finished wool and cotton mixed tweed, in Lovat shade, showing an ox-blood overcheck. Price, \$25.00.

#### Suits for Him Who Has Graduated or Is About to Graduate



#### From "Shorts" to First "Longers"

These are in splendid selection of models, featuring the single and double-breasted, form-fitting belted and scum-around-waist styles. Prices range from \$15.00 to \$27.50.

One model is in the three-button, single-breasted, form-fitting, all-around better style, and of a firm finished cotton and wool tweed in dark grey hairline stripe. Price, \$15.00.

Another model similar to above is of soft cassimere-finished grey union tweed, showing a golden thread stripe. Price, \$22.50.

Still another is in the form-fitting, single-breasted sac style, having two breast and two body pockets, with fancy flaps and one button; is of union tweed, in brown pin-checked pattern; also soft finished wool and cotton chevrot, in plain dark Oxford grey. Price, \$23.50.

And another smart model is in the new waisted style with welted all-around seam; of union soft finished chevrot, in rich browns or greys, and with soft roll peak and notched lapels, and slash pockets. Sizes 33 to 37. Price, \$27.50.

—Main Floor, Queen Street.

#### Suits for Men



Illustrating a man's one-button, double-breasted, form-fitting suit, with long, soft roll peaked lapels, material is a soft-finished union chevrot, showing a double chalkline stripe. Price, \$30.00.

Then at \$22.50 is a grey all-wool homespun, fine weave, three-button, semi-form-fitting style suit, with notched lapels and trousers with or without cuffs (alpaca lined).

At \$27.50 are grey pick-and-pick union worsteds, in three-button sac style, with notched lapels. Also at the same price are cassimere finished union tweed, salt-and-pepper suits, in three-button sac style, with notched rolling lapels. At \$27.50 dark black-and-white check union worsted, "EATON-made."

At \$35.00 is a man's all-wool Savory finished worsted, in a dark Oxford grey.

At the same price is an oyster grey fine all-wool worsted three-button sac, with notched lapels.

At \$40.00 is a black and white chalkline striped all-wool worsted, in two-button, single-breasted style, with hump lapels (hand tailored throughout).

At \$40.00—A steel grey all-wool worsted, showing a double stripe with notched lapels. Vests are medium high cut; trousers have two side, two hip and watch pockets, plain or without cuffs. Sizes 36 to 46.

#### Suits for Young Men



Illustrating a young man's high-waisted wool and cotton tweed, form-fitting, two-button, single-breasted suit, almost straight fronted; of dark blue fancy mixture, showing a green thread stripe. Price, \$30.00.

At \$30.00 are all-wool EATON-made tweed suits, in brown, thred with green hair-line stripe; have peaked lapels, and are in three-button sac style.

Another at the same price and of EATON make is of Saxony finished union worsted, in medium grey, three-button sac style.

At the same price is a union homespun in light grey with patch pockets, in form-fitting style.

Another is of dark brown all-wool tweed, in camel hair effect, in two-button, body-fitting, all-around-welted-seamed model, slash pockets. Price, \$35.00.

At \$18.00 are cotton and wool mixed tweed suits, in hair-line striped patterns, in two-button, single-breasted, form-fitting style, with slash pockets. Trousers have two side, two hip and a watch pocket.

At \$22.50—A union worsted in black and grey pin-checked pattern, in single-breasted, form-fitting, two-button style, with natural fitting shoulders, slash body pockets, ticket pocket in fore part facing.

At the same price is the Brad model of cassimere-finished tweed, in steel grey, showing a golden thread stripe; are in single-breasted, all-around better style, with slanting body pockets having flaps; also two outside breast pockets with flaps having one button; lapels are peaked and soft rolling. In both cases trousers have cuffs.

At \$27.50 is a young man's two-button waisted model, of all-wool homespun, in Cambridge grey. Has long roll notched lapels, slash pockets, strapping and three buttons on cuffs.

### A List of Easter Hats, Headed by a Silk Topper at \$6.50



Which is of French make, with taper crown, and brim with a tendency to be flat set; is well finished inside, and has white sweat band, which completes a smart hat. Sizes 6 1/2 to 7 1/2. Each, \$6.50.

Men's Soft Hats at \$4.00 are of fur felt, with medium crown, and brims slightly flared, with welted or bound edge. A very suitable hat for a young man. Shades are green and grey. Sizes 6 1/2 to 7 1/2. Each, \$4.00.

Men's Soft Hats at \$5.50. (American make.) Light in weight and in medium blocks. The crowns are neatly shaped and have neatly flared brims. Shades are grey, green, black and intermediate. Sizes 6 1/2 to 7 1/2. Each, \$5.50.

Men's Stiff Hats, Canadian make. A hat of fur felt, the well-known "Stetson" of fur felt, with not too wide crown. The brims are rolled or slightly flared. Shades are light and dark green, grey and brown. Sizes 6 1/2 to 7 1/2. Each, \$7.50.

Men's Stiff Hats, Canadian make. A hat of fur felt on a medium block. The brims are inclined to be flat; have leather sweat band and are well finished throughout. Sizes 6 1/2 to 7 1/2. Each, \$4.50.

—Main Floor, James St.

### A Part of the EATON Clothing Service

Consists of experienced tailors who are at your service to make any alterations necessary. Such alterations usually consist of taking a little in on the shoulders, lengthening or shortening of sleeves and so on. Then you have a suit that fits.

Remember, at EATON'S you get full satisfaction or your money refunded.

Come today, come any day. You'll be greeted with a measure of square dealing and thoughtful attention that will make buying a pleasure, and impress upon you that at EATON'S you are welcome to pick and choose, and compare values, as you will.

### Shirts and Cravats for Evening and Everyday Wear

An Evening Dress Shirt, "Arrow" Donchester brand. Has full-sized laundered bosom and is two-button coat style, with specially constructed non-bulge front; laundered cuffs and different sleeve lengths. Sizes 14 to 17 1/2. Each, \$2.50.

A suitable Cravat to correspond is "Reid's" Hand-tied Dress Tie, which has the appearance of a hand-tied tie, yet can be put on or taken off collar without untying knot. In plain or fancy materials. Each, 50c.

Men's Shirts at \$6.50 each. Are of plain white Jap silk. Have soft double cuffs, laundered neckbands, and are in coat style. The sleeve lengths are assorted. Sizes range from 14 to 17. Each, \$6.50.

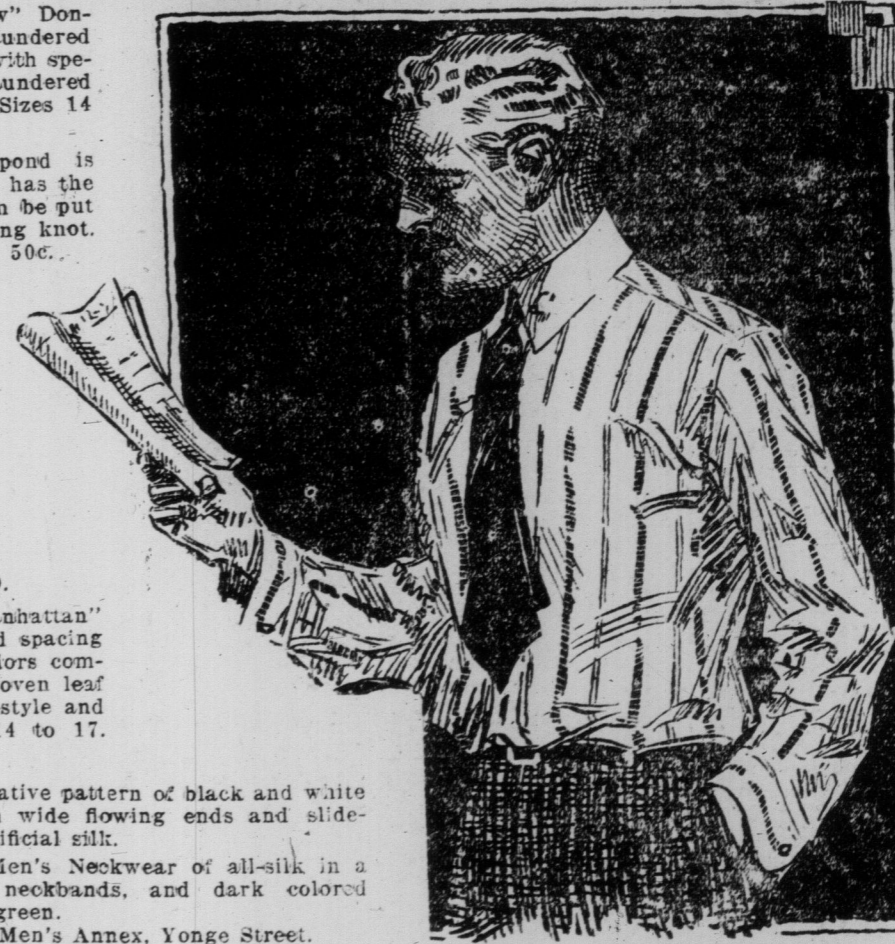
Another very smart Shirt is priced at \$7.50. It is of American art silk, and has a wide plain white stripe, on fancy woven grounds of Nile green, helio or royal blue; has soft cuffs. Sizes range from 14 to 17. Each, \$7.50.

At \$12.00 is an All-silk "Manhattan" Brand Shirt, with white silk stripes and all-over pin stripes of many colors combined; over this stripe is an interwoven leaf pattern in scroll effect. Is in coat style and has soft double cuffs. Sizes 14 to 17. Each, \$12.00.

A Necktie at \$1.00 is a conservative pattern of black and white mixture; in graduating shape with wide flowing ends and slide-easy neckband. Material is of artificial silk.

At \$1.50 is another line of Men's Neckwear of all-silk in a nice wide shape, with slide-easy neckbands, and dark colored grounds of blue, black, purple and green.

—Men's Annex, Yonge Street.



THE T. EATON CO LIMITED