

SHAKESPEARIAN SILHOUETTES.



Prince Henry and the Drawer.



Falstaff and the Page.



Master Shallow and Master Silence.



Poins and Doll Tearsheet.

**AMERICAN WATCHES**  
 Illustrated catalogues containing price list, giving full information  
**How to Choose a Good Watch.**  
 Sent free. Address S. P. KLEISKER,  
 P.O. Box 1022, Toronto.

SOLD THROUGHOUT THE COLONIES



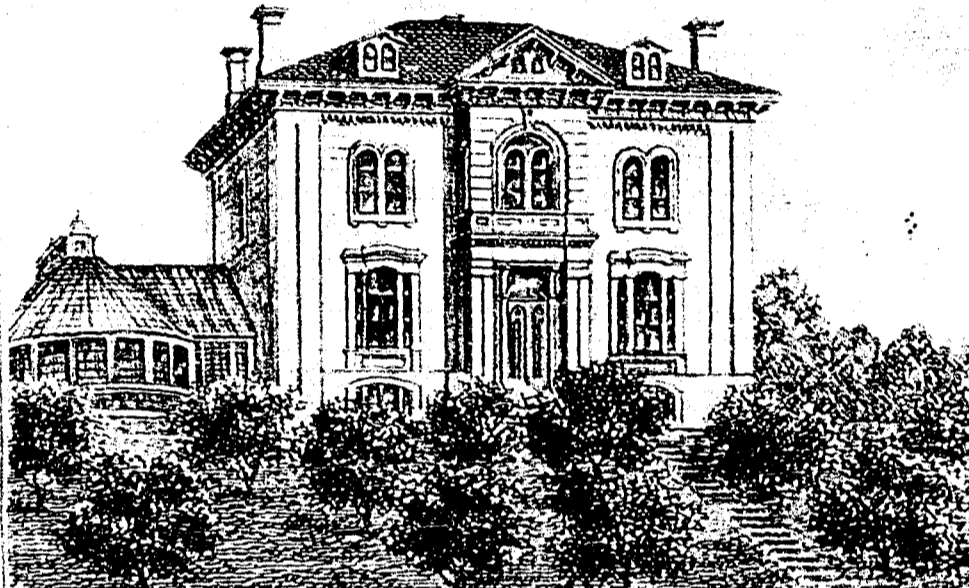
**OXFORD**  
 Registered Mourn-  
**STATIONERY;**  
 Solid Black Borders,  
 in all usual widths.  
 Elegant, but free from over-  
 decoration.



**DENTELLE**  
 REGISTERED COMPLIMENTARY  
**MOURNING**  
 NOTE PAPERS  
 AND ENVELOPES.

For all these and other designs printed in the best style upon the  
 finest quality paper.

FERRY, STONEMAN & Co., Sole Manufacturers,  
 Wholesale Stationers, 24, Hatton Garden, London, England.



**FIRST-CLASS RESIDENCE FOR SALE.**

**THE** Large, Substantial, and Elegant Mansion, known as ROSE PRÉ, be-  
 longing to the Heirs of the late GEORGE DESBARATS, Esq., is now  
 offered for sale. Possession 1st May next.

**SITUATION:** One mile from Post-Office; entrance, 1080 Dorchester Street West. Com-  
 mands a magnificent view (which can never be obstructed) of the City, River St. Lawrence,  
 and Victoria Bridge.

**HOUSE:** Isolated; cut stone on the four sides; 54 x 52 feet; fitted with all modern  
 conveniences of steam heat, hot and cold water, baths, &c.; perfectly ventilated; Drawing-  
 Room, 22 x 50; Dining-Room, 20 x 30; Library, Fire-Proof Vault, &c. The whole most sub-  
 stantially built and tastefully finished.

**DEPENDENCIES:** Conservatory, 25 x 50; Vinery, 20 x 120, stocked with choice grapes,  
 in full vigour, and bearing heavily; Back Stables, Gardener's House, Sheds, &c.

**GROUNDS:** Ample stocked with the finest apple, pear, plum, and cherry trees, beauti-  
 fully sodded. Fine croquet lawn. Superficies, 130,000 square feet.

For Completeness, Convenience, Elegance, and Comfort, no Home, equal to this, is likely  
 to be offered for sale for many years.

**PLANS** have been prepared for the subdivision of this important property, showing its  
 adaptability for sale in lots, and its speculative value to a purchaser wishing to dispose later  
 of parts or the whole of the land. The subdivision plan shows 15 excellent lots, all conve-  
 nient of access, the principal one having 42,577 feet of superficies, and having access to Dor-  
 chester by St. Charles and St. Martin Streets, and to Richmond Square by an Avenue of easy  
 grade to be cut in the hill side.

**TITLES PERFECT.** Terms easy. Only a small portion in cash, and the remainder at in-  
 terest, a portion of which at 6 per cent., on account of a substitution. For further particulars  
 plans, &c., apply to THEODORE DOUCET, N. P., 60 St. James Street; or GEORGE E.  
 DESBARATS, 319 St. Antoine Street. 8-2211-579.

**PIANOS.**

**THE MATHUSHEK**  
 Is endorsed by the most noted artists of the day as  
**THE BEST PIANO MADE.**

**THE FISCHER**  
 Is thoroughly made, and a most delightful Parlour  
 Instrument.

**THE BEAUTY,**  
 Seven octave, overstrung, rosewood, all round cor-  
 ners, three mouldings, back finished like front,  
 carved legs, at \$125. Endorsed by Jules  
 Benedict, Pianist to the Queen, Thalberg,  
 &c., and awarded gold medal at  
 the Bielefeld Institute.

**PRINCE ORGANS,**  
 The best in the market. All Instruments **WHOLE-  
 SALE AND RETAIL,** and warranted five  
 years. We are in a position to supply  
 local dealers in every part of the  
 Dominion at manufacturers' prices.

**LOWEST WHOLESALE PRICES.**

**NORRIS & SOPER,**

Colborne Street, Toronto.  
 7-10-11pm-08

**THE MODERN  
 Turkish or Roman Bath.**

St. Monique Street,  
 Near Crystal Palace,  
 MONTREAL.

Rebuilt, Remodelled, Enlarged, and  
 now  
 Without exception the most Complete and Luxurious  
 Bathing Institute on the Continent

**BATHING HOURS.**  
 Gentlemen, 6 to 9 a.m., and 2 to 4 p.m.  
 Ladies, 10 a.m. to 5 p.m.  
 Single Bath Ticket.....\$ 1  
 6 Tickets.....5  
 13 Tickets.....10

Send for circulars.  
**DAVID B. A. MACBEAN, M.D.,**  
 Proprietor.  
 August 19. 8-9 26f 2 m.

**NOVEL WATCH-KEY CHARM, PAPER  
 Cutter, Envelope Opener, and Nail Cleaner—  
 four in one.** Sells at night by Agents—boys and girls  
 everywhere. Charm sent to fit any watch on  
 receipt of watch-key and 25 cents. Special terms to  
 Agents: **CITY NOVELTY COM'Y.,** Drawer 217,  
 Buffalo, N. Y. 087-22 23

*A Gem worth Reading!—A Diamond worth Seeing!*  
**SAVE YOUR EYES!**  
 Restore your Sight!  
 THROW AWAY your SPECTACLES.  
 By reading our Illus-  
 trated **PHYSIOLOGY  
 AND ANATOMY OF the  
 EYE SIGHT.** Tells  
 how to Restore Impair-  
 ed Vision and Overworked Eyes; how  
 to cure Weak, Watery, Inflamed, and  
 Near-Sighted Eyes, and all other Dis-  
 eases of the Eyes.  
 WASTE NO MORE MONEY BY ADJUSTING  
**HUGE GLASSES ON YOUR NOSE AND DIS-  
 FIGURING YOUR FACE.** Pamphlet of 100  
 pages Mailed Free. Send your address to  
 us also.

**Agents Wanted,**  
 Gents or Ladies. \$5 to \$10 a day guaranteed.  
 Full particulars sent free. Write immediately,  
 to **DR. J. BALL & CO.,** (P. O. Box 267),  
 No. 91 Liberty St., New York City, N. Y.  
 8-22 1an-08—597

**IMPORTANT TO PARTIES OWNING OR  
 USING MACHINERY.**

**STOCK'S CELEBRATED EXTRA  
 MACHINE OIL.**

**THIS OIL** has been in very general use in  
 Ontario for the past two years, and with the  
 greatest satisfaction, as may be seen by testimonials  
 from many of the leading Houses in Ontario. It will  
 not thicken in cold weather.

From the **JOSEPH HALL WORKS,** Oshawa: I  
 consider Mr. Stock's Oil cheaper at \$1.00 per gallon  
 than Olive Oil at 50 cents. Yours respectfully,  
 F. W. GLEN, President.

Sold in quantities to suit purchasers at **MESSRS.  
 LYMAN, CLARE & CO.,** 382, 384, & 386, St. Paul  
 Street, Montreal, where the testimonials of the principal  
 consumers of Oil in Ontario can be seen. 5 8

**GENTLEMEN** wishing for the best Orna-  
 mental or Fruit Trees, Flowering Shrubs,  
 Perennial or Annual plants, &c., would do well to  
 send their orders to  
**SHANLEY & GALLAGHER,**  
 Wholesale and Retail dealers in Fruit and Orna-  
 mental Trees, Shrubs, Roses, Bulbs, Seeds, &c.,  
 P. O. Box 317, Rochester, N. Y.  
 8-9 26f

**WILSON'S**

**ADJUSTABLE CHAIR.**  
**THE NOVELTY OF THE AGE!**  
 An ingenious piece of mechanism, which can be ar-  
 ranged in  
**THIRTY POSITIONS,**  
 AND CONVERTED INTO AN  
 Invalid, Parlour, Library, Reading, Writing, Reclin-  
 ing, Smoking, Student's, Physician's, and  
 Dental's Chair, or a Lounger, Bed and  
 Child's Crib and Sling.  
 Circulars with explanatory diagrams sent free of  
 application. Orders by mail, or otherwise, receive  
 prompt attention, and Chairs carefully and securely  
 packed, shipped to any address on receipt of price,  
 or forwarded by express, payable on delivery.  
 Address,  
**THE WILSON MANUFACTURING CO.,**  
 Sole Manufacturers,  
 245 St. James St., Montreal.  
 P. O. Drawer 22. 087-14 22

**INTERCOLONIAL RAILWAY.**  
**1873. Summer Arrangement. 1873.**  
 On and after **MONDAY, 29th inst.,** a Passenger  
 and Mail Train will leave Halifax daily, at 7:30 a.m.,  
 and be due in St. John at 8:30 p.m. A Passenger  
 and Mail Train will also leave St. John daily, at 8:00  
 a.m., and be due in Halifax at 8:50 p.m.  
 Trains will connect  
 At Paines with trains to and from Shediac and  
 intermediate stations.  
 At Truro with trains to and from Pictou and inter-  
 mediate stations.  
 At Windsor Junction with the trains of the Windsor  
 and Annapolis Railway.  
 At St. John with the Consolidated European and  
 North American Railway for Bangor, Danville  
 Junction, Montreal, Quebec, Portland, Boston,  
 also with the International Steamers to and from  
 Eastport, Portland, and Boston.  
**LEWIS CARVELL,**  
 General Superintendent  
 Railway Offices,  
 Montreal, N.B., May 1873. 7-2-11

**Reduction in Freight Rates.**  
**THE GRAND TRUNK RAILWAY WILL**  
 continue to send out, daily, **THROUGH CARS**  
 for **CHICAGO, MILWAUKEE, ST. PAUL,** and  
 other Western points, at reduced rates from the  
 winter tariff.  
 Shippers can get full information by applying to  
 Mr. BURNS, Agent G. T. R., Chaboulliez Square, or  
 at the Office of the General Freight Agent,  
**C. J. BRYDGES,**  
**MANAGING DIRECTOR.**  
**P. S. STEVENSON,**  
 General Freight Agent. 7-21 11  
 Printed and published by **GEORGE E. DESBARATS**  
 1, Place d'Armes Hill, and 319, St. Antoine street,  
 Montreal.