

DRAUGHTS-CHECKERS

SOLUTION.

PROBLEM 194.—The position was: black kings 6, 10, 15; white men 14, 17, king 7. White to play and draw. The only solution received up to the time of writing was the following, by J. T. B., City:—

1-7 3 11-2 2-2-7 7-10
15-11 3 8 17 13 8 11
14 7
drawn.

We give the following variation to show how easily white might have lost.

VAR. I.

7 2 2 9 14 7 22-6
15-18 18-22
b. wins.

VAR. II.

6-10 8 11 10-7 11 16
drawn.

VAR. III.

6-9 2-6 9-5 7 11
8 11 11 7
drawn.

GAME No. 81—BRISTOL.

The first move gives the title to the opening, and is considered a strong opening move. Over 2,000 variations have been published on this opening alone.

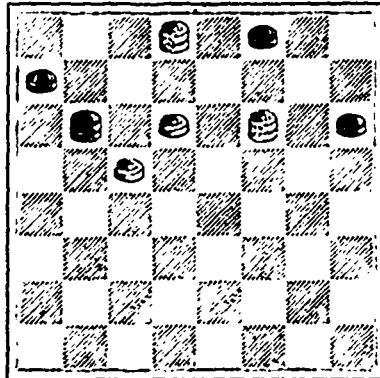
11-16 3-8 15-24 31-27
a-24 20 32 27 28 19 6 2
b-16-19 1-5 7-11 10-14
13 16 25 22 14 9 2 6
12-19 14-18 5-21 14-17
c-22 18j 22 17 26 17 6 9
d-9-14 18-22 6-10 17-21
18 9 17 14 31 27 9 14
5-14 10-17 1-21-25 27-32
25 22 21 14 13 9 19 15
8-11 k 8-12 25-30 11-18
22 17 26 17 17 13 14 23
4-8 19-23 30-26 32-28
29 25 27 18 9 6 24 19
11-15 15-22 2-9 28-24
g-27 24 30 26 13 6 19 15

8-11 11-15 26-31 24-19
h-17 13 24 19 27 24 drawn.
a One of the strongest replies; Anderson gave no other.
b Best to avoid a cramped game by 8-11, 28 24, etc. It is always a good plan to keep command of this square; also its opposite 14 when playing the white.
c Better than 27 23 or 27 24, as the man on 19 cannot be won.
d To maintain an open position; 10-14 leads to a complex game, while 8-12 or 9-13 are weak because played to the side of the board.
e To keep the man off 16, and ready to back up 11 15 if 27 24 is played
f This is not now considered as strong as 27 23.
g Now if 27 23, black gets the best game by 19-24, 28 19, 15-24, 32 28, 6-9, 28 19, 9-13, etc., and though a man up, the draw is difficult for white.
h Now if 32 27, black plays 19-23, 26 19, 14-18, 17 14, 10-17, 21 14, 18-23, 19 10, 6-15, 27 18, 15-29, and black wins as Mugridge once trapped the great Wyllie.
i Loses, but 27-23 leads to an easy draw.
j The last two moves are compulsory, for 15-18 loses, and 21 17 loses.
k This now forms a position which has had a great deal of attention at the hands of the critics (6-9 wins off-hand.)
l A novice might think: "I'll block him by 2-6." But he would answer with 27 23, and if 11-15, 17 14, etc., and white completely turns the tables by winning the game.
The above game is taken from a small but valuable book, entitled

"Hill's Synopsis of Draught Openings," written by Mr. James Hill, a recognized authority on the game, and copyrighted and published simultaneously in Great Britain and the United States. We advise all our readers who wish to become proficient in checkers to secure this small work, and to put its contents away—not in their drawers but in their memories. If they do this some one will soon wish to wrest from Mr. Forsyth the championship of the Maritime Provinces, which he has so long held. It may be ordered from any stationer, and will cost but 25c.

PROBLEM 196

From the *Scottish American Journal*
Black men 3, 5, 12, king 9



White men 10, 14, 20, kings 2, 11.
White to play and win.

The above is very neat but not difficult. We invite all interested in checkers to send us solutions. We are counting the post-cards received containing solutions to problems published during the last few weeks, in order to ascertain how many take

enough interest in this column to pay one cent for a post card. If we find that the numbers are too few to authorize us in keeping it up we shall certainly discontinue at the end of the current year.

NATIONAL COLONIZATION LOTTERY.

Under the Patronage of Rev. Father Labelle
Established in 1881, under the Act of Quebec,
32 Vict., Chap. 36 for the Benefit of
the Diocesan Societies of Colonization of the Province
of Quebec.

CLASS D

The 1st Monthly Drawing will take place
On **WEDNESDAY, Dec. 17th, 1890.**
At 2 o'clock, p.m.

PRIZES VALUE, \$55,000.

Capital Prize: 1 Real Estate worth \$5,000.00

LIST OF PRIZES.

1 Real Estate worth.....	\$5,000	5,000
1 Real Estate worth.....	2,000	2,000
1 Real Estate worth.....	1,000	1,000
1 Real Estate worth.....	500	2,000
10 Real Estates worth.....	300	3,000
30 Furniture Sets worth.....	100	6,000
60 Furniture Sets worth.....	100	6,000
200 Gold Watches worth.....	50	10,000

APPROXIMATE LOTS.

100 Silver Watches worth.....	25	2,500
100 do do do do.....	15	1,500
100 do do do do.....	10	1,000
1000 do do do do.....	10	10,000
1000 Toilet Sets.....	5	5,000

2607 Prizes worth.....\$55,000.

TICKETS, \$1. 11 TICKETS FOR \$10.

It is offered to redeem all prizes in cash, less a commission of 10 per cent.
Winners' names not published unless specially authorized.

DRAWINGS ON THE THIRD WEDNESDAY OF EVERY MONTH.

OFFICE—19 ST. JAMES ST., MONTREAL, CA.
A. A. AUDET, Secretary.

A State of Siege



How many people there are who regard the coming of

winter as a constant state of siege. It seems as if the elements sat down outside the walls of health and now and again, led by the north wind and his attendant blasts, broke over the ramparts, spreading colds, pneumonia and death. Who knows when the next storm may come and what its effects upon your constitution may be? The fortifications of health must be made strong. **SCOTT'S EMULSION** of pure Norwegian Cod Liver Oil and Hypophosphites of Lime and Soda will aid you to hold out against Coughs, Colds, Consumption, Scrofula, General Debility, and all Anemic and Wasting Diseases, until the siege is raised. *It prevents wasting in children.* **Palatable as Milk.**

SPECIAL.—Scott's Emulsion is non-secret, and is prescribed by the Medical Profession all over the world, because its ingredients are scientifically combined in such a manner as to greatly increase their remedial value.

CAUTION.—Scott's Emulsion is put up in salmon-colored wrappers. Be sure and get the genuine. Prepared only by Scott & Bowne, Manufacturing Chemists, New York, and Belleville. All Druggists.