

# Selling Events For the Last May Saturday

## Saturday Candy Treat

100 Boxes fresh, assorted, hand-dipped chocolates, hard and cream centers; while they last, box .43c  
Children's Novelties—Glass spark plugs, telephones, lanterns, "Don't park here," filled with candy, each .15c  
Try the new chocolate bar, "Why Mable," cut in thin slices and serve for special occasions, bar .10c  
A fresh shipment of Cowan's Medallions, Maple Buds, Bears, orchid with almond nut centers, lb. .60c

Summer frocks for every day's engagements may be made of Canton Crepe, dark and lustrous, or of the printed silks in whose patterns are written many colorful stories of the Orient.

## CANTON CREPES.

First in popularity are the Canton Crepes. There's a Swiss fabric of pure silk, with a fine crepe weave, and a softness which makes it well adapted to the slender lines of the present styles. In black, navy and brown, as well as in the lighter shades of gray and almond green; 39-inch. Just a limited quantity at . . . . . \$3.00 yard

## ARMURE SILK.

Black Armure Silk of an untearable quality, and a rich satin finish, is much in demand for cool and practical little office dresses or slips; 36 inches wide, at . . . . . \$1.29

## PRINTED CREPES.

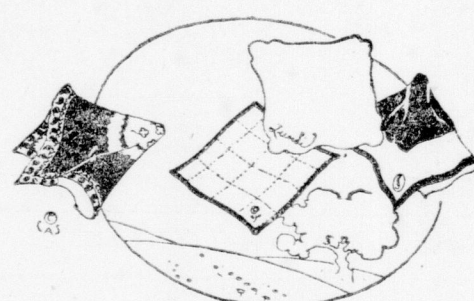
The vogue for printed dresses and scarfs emphasizes the importance of these new silks. Their colorful beauty, and their lovely Oriental patterns offer a convincing explanation of their widespread popularity; 49-inch, at . . . . . \$2.50, \$3.00 and \$3.50 per yard  
Silk Department.

## Silks May Be Plain or Patterned

In some cases stocks are being squared up, and many special purchases are printed for Saturday, the last day of May, which afford extraordinary opportunities for savings. If low prices will insure quick selling, we are certain that none of our specials for Saturday will remain long. So early inspection is advised. Warmer

weather is a safe prediction now, and sports apparel will have all its own way. Here you will find sports apparel of the highest order, and in all the approved fabrics and colors of the mode. Suits, frocks, hats, skirts, blouses, with new ideas embodied in their designing.

## The BREATH of the AVENUE



## THE HANDKERCHIEF ACCESSORY FOR SUMMER COSTUMES

The handkerchief blossoms out as summer comes in. It finds endless ways of fitting in with summertime fashions. And now New York's displays of summer clothes show how important is the handkerchief to the harmony of the costume.

If the handkerchief is conservative enough in color to go with any fashionable summer costume, it will follow the lead of summer shoes and be plain white, or black and white. Or it may reflect the summer stocking shades in one of the tea-rose tones.

It is often a note of contrast—a piquant print or a solid color that carries out the bright stripes in a frock, a bright hat, a belt or a scarf.

The handkerchief may also match the dress. In the high shades for morning, in pastels for afternoon. And the favorites among these matching handkerchiefs are those with coin dots in contrasting colors, intricate little inserts of net footings, fine black embroidery, borders of tinted lace. Or they are petal-edged nose-gay handkerchiefs that masquerade as flowers when they are held in the hand.

The pockets of trim summer sports clothes, the bright colors in accessories and the new shades in summer frocks—all call for new handkerchiefs. And at this season of the year, handkerchief counters are decidedly colorful.

The Breath of the Avenue, New York.  
SMALLMAN & INGRAM, LTD., EXCLUSIVE SERVICE.  
(Copyrighted).

## Saturday In Linen Section

### PLAIN HEMSTITCHED LINEN TEA NAPKINS \$1.59 HALF-DOZEN.

Fine quality pure Irish linen in the general 12-inch size, finished with dainty spoke 1/2-inch hem. These are rare values and make useful gifts for showers, prizes, etc. These with an extremely nice quality 36-inch cloth make a most useful and practical bridge set. Napkins limited to 20 dozen. Special . . . . . \$1.59 half dozen  
36-inch Cloths, specially priced at . . . . . \$1.85 each

### IRISH HAND-EMBROIDERED PILLOW CASES, \$1.95 AND \$2.50 PAIR.

A really dainty slip to match embroidered spreads, shown in hem-stitched edge with sprig or wreath embroidered by hand on lovely quality linen-finished cotton. Priced at . . . . . \$1.95 and \$2.50 pair

### 90 x 100 INCHES, IRISH EMBROIDERED BEDSPREADS, \$4.95.

Here's a special that represents a real saving for the week-end shoppers. An attractive spread made from choice linen-finished cotton, embroidered in neat designs with wide spoke hemstitch. A gift suggestion for the bride. Saturday special . . . . . \$4.95 each

### PURE LINEN DAMASK TRAYS, 59c TO 85c EACH.

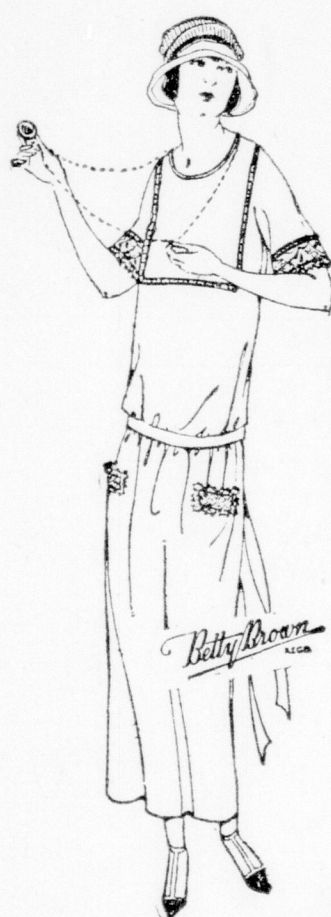
Just passed into stock are some unusually good values in Pure Linen Damask Tray Cloths and end pieces in a good variety of pretty designs. Two sizes.  
14x20, at . . . . . 59c, 65c, 75c each  
16x24, at . . . . . 65c, 75c, 85c each

## ROAST TURKEY DINNER SATURDAY

Restaurant—Fourth Floor.  
Half Grape Fruit.  
Potage Alexandria.  
Fillet of Fresh Trout.  
Tomato Salad Maitre d'Hotel.  
Stuffed Young Turkey.  
Cranberry Jelly.  
French Fried or Mashed Potatoes.  
Buttered Peas.  
Bread, Rolls and Butter.  
Steamed Fruit Pudding.  
on Ice.  
Fresh Strawberries and Ice Cream.  
Pot of Tea or Coffee.  
11:30 TO 2:00.

75c

## BETTY BROWN TUB FROCKS



The gayety and youthful simplicity of the Betty Brown Dresses is very winning! Colorful little gowns of linen or willow suiting in the range of bright colors, which characterizes this season, and in a variety of attractive designs which is sure to appeal to teens and twenties.

A delightful interpretation of the summer styles is a dress of honeydew willow suiting. White insertion simulates a square yoke and lace and insertion trim the collars, pockets and cuffs, which are further adorned with thread embroidery in black and white silk. In a variety of popular shades . . . . . \$6.75

A particularly attractive dress is developed in mauve willow suiting. Across the front of the skirt are two wide flounces, piped with white silk braid and trimmed with buttons. There is a club collar, likewise trimmed with braid and buttons, an inset pocket and narrow self ties. Also in rose, sand and gray . . . . . \$9.50

Pretty Tub Dresses in a variety of colors, sizes, styles and prices. . . . . \$6.75 to \$10.50

Second Floor.

## Special Purchase of Newest Sport Ties and Collar and Cuff Sets, 59c

On Sale Saturday

12 dozen Crepe de Chine Four-in-Hand Sport Ties in colors of mauve, poudre blue, black, gold, sand, brown, gray, coral, navy, red mufin and jade. Special price . . . . . 59c

5 dozen White Organdy Peter Pan and Bramley Collar and Cuff Sets, Val. lace and hemstitched trimmed. Special price . . . . . 59c  
4 dozen Beach Cloth and Linen Bromley and Bramley Collar and Cuff Sets in colors, white, blue, orchid, maize and natural. Special price 59c



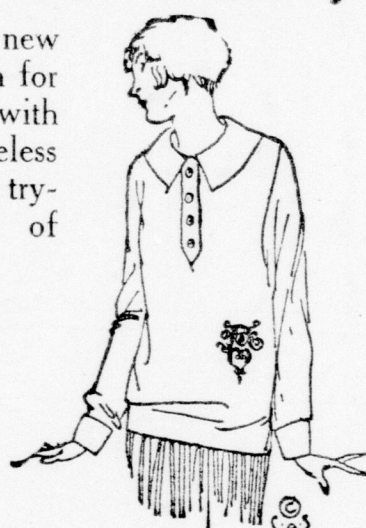
## Overblouses of Voile and Dimity

There's a whole Manual of Rules for the new blouses! They must be cool and crisp and fresh for warm summer days; they must be suitable to wear with the pleated flannel skirts and colorful sleeveless sweaters. And they must be inexpensive, for the trying heat of summer demands a plentiful supply of dainty tub blouses.

Fine striped dimity fashions delightful white overblouses with long sleeves, Bromley or Bramley collars, and hemstitching or embroidery on the collars and cuffs . . . . . \$2.50

There are White Voile Overblouses with abbreviated sleeves, round collars or club collars with the comfortable shallow V, frills of fine Val. lace, and dainty embroideries . . . . . \$4.50 and \$5.00

Second Floor.



## EVERY DAY NEEDS IN THE BASEMENT

Lux . . . . . 10c	Princess Flakes, lb. . . . . 23c	Step Ladder . . . . . 5 ft., \$2.25; 6 ft., \$2.50
Sunlight Soap . . . . . 15 for \$1.00	Satisfactory Paper . . . . . 10c	Clothes Props, 2 ft. high 30c
Rinso . . . . . 3 for 25c	Sani Crepe . . . . . 6 for 25c	Willow Clothes Baskets . . . . . \$1.25 and \$1.75
Sani-Flush . . . . . 30c tin	Cottage . . . . . 40c, or 4 for \$1.50	Wool Mops . . . . . \$2.25
Pearline, 3 for 25c; large 40c	Diamond . . . . . 30c roll	Oblong Dry Velour Mops \$2.50
Dutch . . . . . 12c	S. & I. Blend Coffee and Tea . . . . . 1/2-lb., 35c; lb., 65c	Wall and Ceiling Bristle
Bon Ami, pound and cake 15c	Soda . . . . . 10c	Brush, long handle . . . . . \$2.25
Borax . . . . . 10c	Clothes Horses, 3 rods, high . . . . . \$1.00	Self-Wringing Mops . . . . . 50c
Starch . . . . . 15c; 2 for 25c	Clothes Horses, 4 rods, high . . . . . \$1.25	Corn Brooms . . . . . 49c, 69c, 90c, \$1.00, \$1.25
S. & I. Soap Chips, 2 for 29c		

## MEN'S UNDERWEAR



Athletic and Balbriggan Combinations, 98c and \$1.29

Fine dimity cheek, athletic type; sizes 34 to 46. Sale price . . . . . 98c

Eccu shade Balbriggan Combinations, short sleeve and ankle length. Sizes 34 to 46. Per suit . . . . . \$1.29

Other Combinations, per suit—  
\$1.50, \$1.75, \$2.00  
To \$5.00.

## SUMMER SHIRTS

In all the new pastel shades; collar attached or separate collar to match. Each . . . . . \$2.50

Men's Pure Linen Handkerchiefs, 29c  
4 for \$1.00

About 50 dozen only Men's Pure White Linen Handkerchiefs, hemstitched, large size. Sale price . . . . . 29c, 4 for \$1.00

## A LARGE NEW SELECTION OF

## Boys' 2-Bloomer SUITS

READY FOR SATURDAY.

\$8.95, \$9.95, \$12.95  
\$15, \$16.50

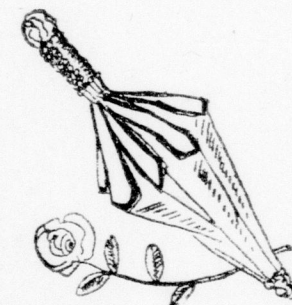
A new complete showing of the latest model Sport Suits for boys; patch pockets; panel backs in sturdy fabrics; light, medium and dark grays, browns, heathers. Sizes 27 to 36.



Sale of Boys' "Sample" Blouses,  
25 Per Cent to Half Price

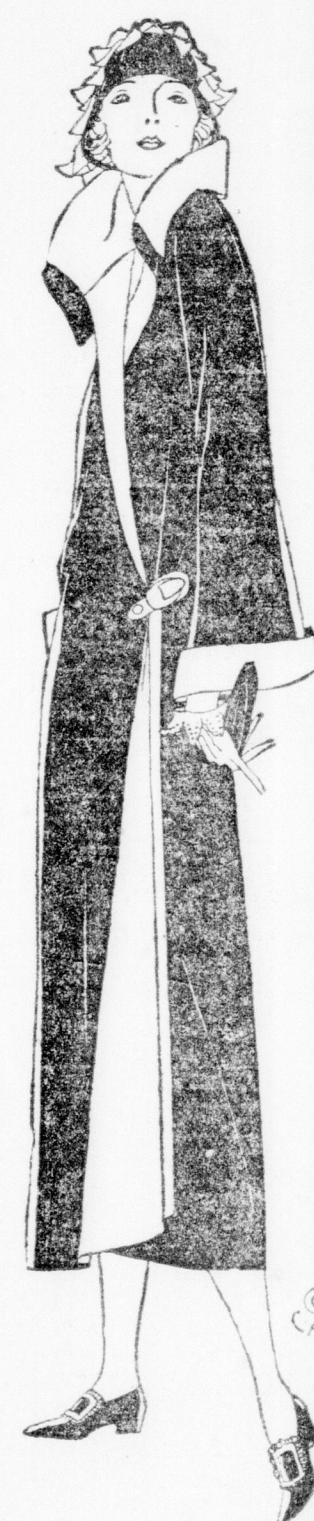
Boys' Blouses and a few Shirts, in almost every type and color; samples and odds; Print Blouses, White Blouses and Khaki Blouses. A great opportunity to save on the lad's summer blouses (6 to 15 years). Sale price . . . . . 98c

## Women's Colored Silk Umbrellas, \$7.00



This is a special lot we have collected together for Saturday selling, including Tom Thumb 28" umbrellas, also our regular 31" umbrellas; coverings are of pure silk, guaranteed to give excellent wear, in colors of navy, green, wine, taupe, purple and brown, with tips and stubby ends, latest handles with leather straps or loops. Saturday only . . . . . \$7.00 each

Beach Parasols with waterproof paper coverings, fancy flower designs in Japanese characters . . . . . \$1.50 each  
Umbrellas repaired or re-covered at reasonable prices.



## Armand's Aids To Beauty

The dainty fascination of the Armand packages is increased by their distinctive pink and white checks, with the silhouetted head of a charming French belle. This artistic exterior suggests the subtle charm, and the exquisite purity which distinguish the Armand creations. Fragrant powders of clinging softness in a variety of delicate tints to bring out your individual beauty.



Armand's Cold Cream Face Powder, Naturelle or Brunette . . . \$1.00 box  
Armand's Amabile Face Powder, white, Naturelle or Brunette, 75c box  
Armand's Bouquet Face Powder, white, Naturelle or Brunette, 50c box  
Armand's Talcum Powder, white only . . . . . 35c tin  
Armand's Compact Face Powder, Naturelle or Brunette . . . \$1.00 case  
Armand's Compact Face Powder, in gunmetal case, Naturelle only \$1.50  
Armand's Compact Refills . . . . . 50c  
Armand's Rouge Refills, small size . . . . . 25c  
Lipstick, medium shade . . . . . 25c  
Kry Nail Polish, in metal case . . . . . 50c

## VINOLIA TOILET SOAPS

Vinolia Castile Bars . . . . . 19c each  
Vinolia Castile Cakes, 6 for 25c  
Boracic and Cold Cream Soap . . . . . 3 for 50c  
Vinolia Round Bath Tablets . . . . . 2 for 25c  
Mothproof Bags to protect winter clothing . . . . . \$24x24, 59c; 24x37, \$1.19; 30x50, \$1.95; 30x60, \$2.25  
Main Floor.

## Saturday Selling in China

Plain White Cups and Saucers (complete) . . . . . 2 for 25c  
Plain White Cups only . . . . . 2 for 15c  
Plain Heavy Glass Water Jugs, suitable for lemonade, 1/2-gal. size, 50c each  
Measuring Jugs, 1-qt. size . . . . . 40c each  
Heavy Glass Tumblers, what you need for the kitchen sink or bathroom . . . . . 5c each  
Glass Butter Covers, 1-lb. size . . . . . 19c each  
Basement.

SMALLMAN & INGRAM LIMITED