

CHURCH DAY SCHOOL Major Street, Toronto SISTERS S. JOHN THE DIVINE KINDERGARTEN and ELEMENTARY DEPARTMENT

Bishop Bethune College, Oshawa, Ontario UNDER THE CHARGE OF The Sisters of St. John the Divine

Trinity College School, PORT HOPE, Ont. Founded 1865. Next term begins April 12th.

A Telegraph Operator has pleasant work, gets good wages and rises to the highest positions.

CANADIAN SCHOOL OF TELEGRAPHY Cor. Queen and Yonge Streets, Toronto.

BRITISH AMERICAN Business College Y.M.C.A. BLDG., TORONTO has a reputation for giving the most thorough and practical courses in all branches of BUSINESS and SHORTHAND work.

ST. ALBAN'S CATHEDRAL SCHOOL Toronto-Incorporated For BOARDERS and DAY BOYS.

CHURCH BRASS WORK Eagle and Rail Lecterns, Awar Vases, Ewers, Candelsticks, Altar Desks, Crosses, Vesper Lights, Altar Rails, Etc.

COWAN'S Healthful and Nutritious Hygienic Cocoa... Sold in 1/4 lb., 1/2 lb., and 1 lb. Tins only Absolutely Pure.

CHURCH WINDOWS, FURNITURE. R. G. GEISLER, Marble and Metal Work 56 West 8th St. (near 6th Ave.), New York.

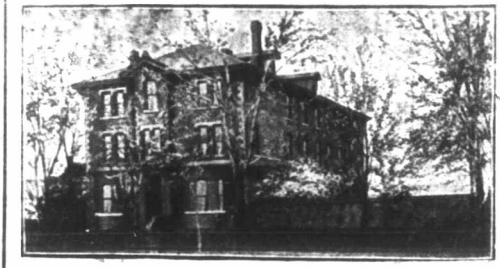
LUXFER ELECTRO-GLAZED Church Window Decorative Glass. WRITE FOR PRICES.

Luxfer Prism Company, Limited, 100 King Street West, Toronto.

HARRINGTON'S TUBULAR Chime Bells Lighter in Weight, Sweeter in Tone, Cheaper in Price Than the ordinary bell

CASTLE & SON 20 University St., Montreal Agents In answering any advertisement it is desirable you should mention The Canadian Churchman.

Church Brass Work MEMORIAL BRASSES, RAILS, VASES. PRITCHARD ANDREWS CO OF OTTAWA, LIMITED, 133 Sparks St., OTTAWA



"Glen Mahur" RESIDENTIAL AND DAY SCHOOL FOR GIRLS 651 SPADINA AVENUE, TORONTO Thorough English Course. Individual Attention. Pupils prepared for the Universities and for Examinations in Music and Art.

WESTBOURNE School for Girls 340 Bloor Street W., TORONTO, Can Re-opens September 10th, 1903.

ST. MONICA'S Residential and Day School for Girls. 170 Bloor St. W., Toronto Re-opens Thursday, Sept. 10th.

EDGEHILL Church School for Girls WINDSOR, NOVA SCOTIA INCORPORATED 1891

ST. ACNES' SCHOOL. A Church School for Girls, ELMPOOL, BELLEVILLE. Patron-The Lord Bishop of Ontario.

HIGHER EDUCATION FOR GIRLS The Bishop Strachan School (Thirty-seventh Year) For Calendar apply to MISS ACRES, Lady Principal, Wykeham Hall, Toronto.

The Parkdale Church School FOR GIRLS-151 DUNN AVE. KINDERGARTEN-FOR BOYS and GIRLS For Calendar apply to MISS MIDDLETON, Lady Principal.

MEMORIAL WINDOWS. Our productions are extensively adopted. Robert McCausland, Limited 86 Wellington St. West, TORONTO

CHURCH BRASS WORK of every description made to order on shortest notice. Designs furnished and satisfaction guaranteed.

KEITH & FITZSIMONS, LIMITED 111 King Street West, Toronto.

STAINED GLASS MEMORIAL :::: WINDOWS :::: BRASSES AND DECORATIONS Castle & Son 20 UNIVERSITY ST., MONTREAL

MEMORIALS AND DOMESTIC ART GLASS DOMINION STAINED GLASS For Co. 3, 1881, 54 RICHMOND ST. E., TORONTO. Fixkey & Booth Props.

Church Brass Work MEMORIAL BRASSES, RAILS, VASES. PRITCHARD ANDREWS CO OF OTTAWA, LIMITED, 133 Sparks St., OTTAWA

JONES AND WILLIS Church Furniture Manufacturers Metal, Wood, Stone and Textile Fabrics. STAINED GLASS ARTIST. 43 Great Russell Street, LONDON, ENG Opposite British Museum. Also at Birmingham and Liverpool

THE CANADIAN NORTH-WEST HOMESTEAD REGULATIONS. Any even numbered section of Dominion Lands in Manitoba or the North-West Territories, excepting 8 and 26, which has not been homesteaded, or reserved to provide wood lots for settlers, or for other purposes, may be homesteaded upon by any person who is the sole head of a family, or any male over 21 years of age, to the extent of one quarter section, of 160 acres, more or less.

ENTRY. Entry may be made personally at the local land office for the district in which the land to be taken is situated, or if the homesteader desires, he may, on application to the Minister of the Interior, Ottawa, the Commissioner of Immigration, Winnipeg, or the local agent for the district in which the land is situated, receive authority for some one to make entry for him. A fee of \$10.00 is charged for a homestead entry.

HOMESTEAD DUTIES. A settler who has been granted an entry for a homestead is required by the provisions of the Dominion Lands Act and the amendments thereto to perform the conditions connected therewith, under one of the following plans:-

(1) At least six months' residence upon and cultivation of the land in each year during the term of three years.

(2) If the father (or mother, if the father is deceased) of any person who is eligible to make a homestead entry under the provisions of this Act, resides upon a farm in the vicinity of the land entered for by such person as a homestead, the requirements of this Act as to residence prior to obtaining patent may be satisfied by such person residing with the father or mother.

(3) If a settler has obtained a patent for his homestead, or a certificate for the issue of such patent, countersigned in the manner prescribed by this Act and has obtained entry for a second homestead, the requirements of this Act as to residence prior to obtaining patent may be satisfied by residence upon the first homestead, if the second homestead is in the vicinity of the first homestead.

(4) If the settler has his permanent residence upon farming land owned by him in the vicinity of his homestead, the requirements of this Act as to residence may be satisfied by residence upon the said land.

The term "vicinity" used above is meant to indicate the same township or an adjoining or cornering township.

A settler who avails himself of the provisions of Clauses (2), (3) or (4) must cultivate 30 acres of his homestead, or substitute 20 head of stock, with buildings for their accommodation, and have besides 20 acres substantially fenced.

Every homesteader who fails to comply with the requirements of the homestead law is liable to have his entry cancelled, and the land may be again thrown open for entry.

APPLICATION FOR PATENT. Should be made at the end of the three years, before the Local Agent, Sub-Agent, or the Homestead Inspector. Before making application for patent, the settler must give six months' notice in writing to the Commissioner of Dominion Lands, at Ottawa, of his intention to do so.

INFORMATION. Newly arrived immigrants will receive at the Immigration Office in Winnipeg or at any Dominion Lands Office in Manitoba or the North-West Territories, information as to the lands that are open for entry, and from the officers in charge, free of expense, advice and assistance in securing land to suit them. Full information respecting the land, timber, coal and mineral laws, as well as respecting Dominion Lands in the Railway Belt in British Columbia, may be obtained upon application to the Secretary of the Department of the Interior, Ottawa, the Commissioner of Immigration, Winnipeg, Manitoba, or to any of the Dominion Land Agents in Manitoba or the North-West Territories.

JAMES A. SMART, Deputy Minister of the Interior.

N.B.—In addition to Free Grant Lands to which the regulations above stated refer, thousands of acres of most desirable lands are available for lease or purchase from railroad and other corporations and private firms in Western Canada.

J. YOUNG THE LEADING Undertaker and Embalmer 359 YONGE ST. Telephone 679

Vol. WE V for one BERI 348 WANTED WANTED County, Ca etc., apply Louisbourg Free Gra Bible A Chair THE RT. Object:— by supplying Sunday Sch Literature, Grants. Forms of Rev. A. S. \$4.50 We make leader is a ot-suit in greer, darl red and set is wool. It suit. We t offer it to factory with hundreds of skirt is trin of the good seams are stitched in canvas, and The coat back, with full sleeves in good bi cerized sate prefer the c skirt or ripp ed to the length was have this s with skirt attached ps suits are all spring, style giri to a sto returned if from neck t seam; also l around his Mention thi Southco SHIR Made of lin or dark blue skirt. The and two dow with insertio seams with s makers, offer our factory entirely satis for suit abluster, blacl \$4.50. SO OHAS. P. sellers, Pu TORONTO FULL S Chant Class Price lists