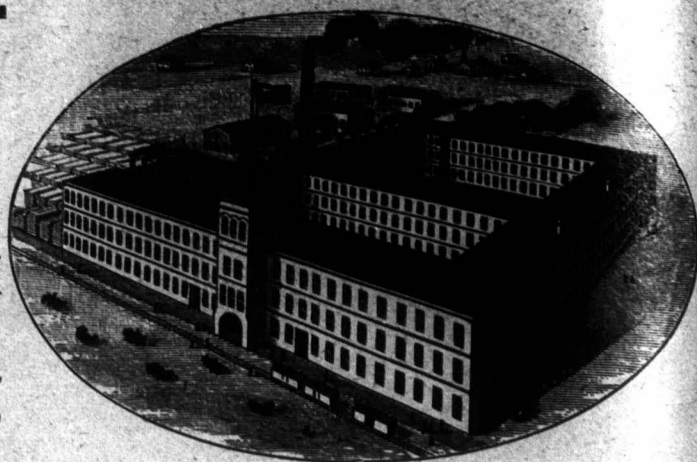


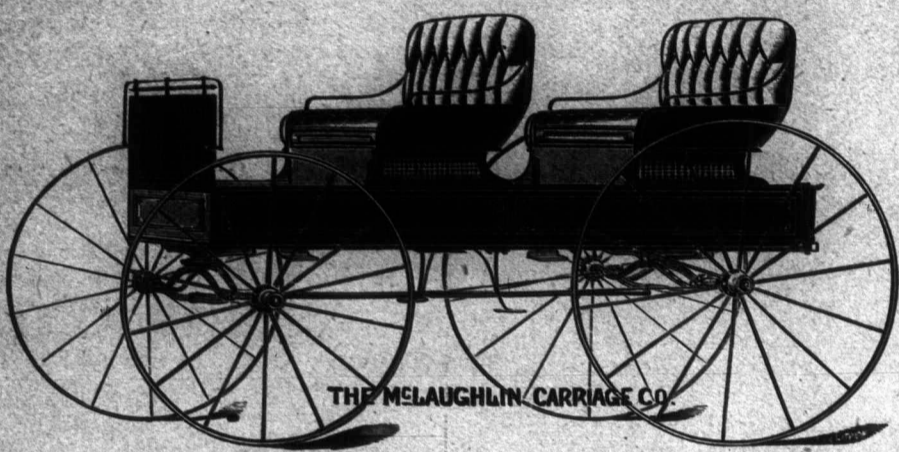
ONE GRADE ONLY AND THAT THE BEST

OUR MOTTO FOR THIRTY YEARS.

HERE'S OUR FACTORY. The largest and best equipped in Canada. Present number of employees 284. Present capacity, forty finished and carefully inspected vehicles every day. We have been making Carriages for thirty years. Everybody knows that McLAUGHLIN CARRIAGES are good Carriages, and that they keep away from the repair shop longer than any other make.



The Best is Always the Cheapest at any Price



HERE'S A WAGON TO BE PROUD OF!

IT'S ONE OF OUR 83 VARIETIES.

Examine the cut closely. It's a perfect likeness.

Special Features!

A standard wheels; genuine hand-buffed trimming leather; solid-back seats, with high, easy spring backs, spring cushions; front seat hinges forward, making access to rear seat easy for the ladies; both seats removable; hand iron strips on bottom of body and on top edge; drop end-gate full width of body; fancy double-bar silver dash rail; axles, 1 inch steel; wheels, A standard, with 1-inch projecting steel tires. Body—31 1/2 inches by 6 feet 8 inches inside; painted in dark colors, handsomely finished, striped and decorated.

WE MAKE 121 VARIETIES OF SPRING WAGONS OF DIFFERENT CAPACITIES.

Buy the Only "Old Reliable," "One Grade Only and That the Best," and Don't be Humbugged.

CATALOGUE AND ADDRESS OF NEAREST AGENT GLADLY FURNISHED.

THE McLAUGHLIN CARRIAGE CO., OSHAWA, ONT.

**American Standard
Corn and Bean
Planter.**

PRICE, \$2.00
WITH ORDER.

It is the only Planter containing an Adjustable Dropping Disc.

Upon examination you will find it is accurate, light, easy to handle, and the best made Planter ever offered for sale.



FOR SALE BY
B.D. STEADY, Importer, BROCKVILLE, ONT.
SOLE AGENT FOR CANADA.

SALT

WE ARE GOING TO HAVE
A LATE SPRING.

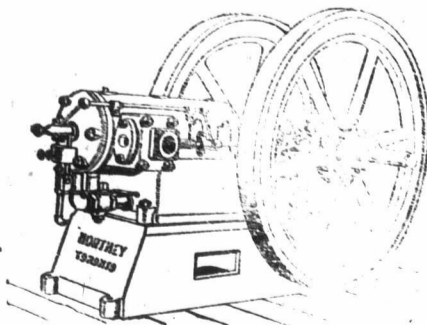
THIS means a press of work and backward crops. Nothing brings on any crop quicker, causing plump, full, early-ripening grain, with straw strong and bright, than a liberal dressing of salt. Save up to 100 pounds per acre as a top-dressing. Try it and be convinced. Send for prices.

R. & J. RANSFORD
CLINTON, ONT.

To the Farmers of this Canada of Ours!

Gentlemen,—We thank you for your ever-increasing patronage, and remember we do not class our Queenston Cement with the water limes and hydraulic cements now on the market, but we guarantee our cement equal to the Imported or Domestic Portland Cements for all farm structures, such as Basement Walls for Stables, House or Cellar Walls, Cisterns, Hog Pens, Poultry Houses, and for all kinds of stabling. Kindly investigate our system of ventilation. This system is fully covered by letters patent, but to our patrons we make no charge. Write us for our new pamphlet for 1899, containing valuable information, prices, etc.

ISAAC USHER & SON,
Queenston, Ontario.



NORTHEY GASOLINE ENGINE

The Ideal Motor Power for the Farm.

Robert Leithgow, Chatterton P.O., Ont., writes:—"The 4 H.P. Gasoline Engine has given me perfect satisfaction. She works like a charm. I can grind from twenty to thirty bushels to the hour, according to the fineness of the work. I find it a very economical and reliable power."
Sold on the most reasonable terms. Send for illustrated booklet.

NORTHEY MFG. CO.

TORONTO, 1012 KING ST. SUBWAY.

FARMERS!

NO MATTER WHAT YOU WANT, SEND DIRECT TO US, WE WILL BUY YOUR

Butter, Eggs,
Poultry, Wool, Hides,
ETC.,

and will pay you cash or goods as you may direct.

To secure a good crop of roots, order your SEEDS at once. Our prices are the lowest and the seeds finest quality.

For description of goods and prices, see our catalogue and spring circular.

The Farmers' Co-operative Store,

—THE—
People's Wholesale Supply Co.

144-146 East King St., TORONTO.

R. Y. MANNING, MANAGER.

WANT A BICYCLE?

For only \$29.50 we can sell you as good a wheel as you can buy elsewhere at any price. This is the description: Color, black; 1899 Model; name, FAMOUS; made by the Milwaukee Engineering Co., the largest makers of Bicycles in the U. S. Tires—Morgan & Wright—best double tube; size of frame, 23-inch; flush tubing; 2 1/2-inch drop frame; three crowns; standard gear; new patent saddle; adjustable nickel handle-bars with leather grips; wheels, 28-inch, with hardest of ball bearings; dust-proof; 2-piece crank; rat-trap ball-bearing pedals; tool bag, wrench, oiler, and bell. Gents, 24 lbs.; women's, 25 lbs.—both same price, viz., \$29.50. Terms: \$4.50 with your order and balance of the money (viz. \$25) when the wheel reaches you. We send the wheels by express C. O. D., subject to examination in the hands of the Express Co. You pay the Express Co.'s charges. We accept no order unless \$4.50 comes with it as a guarantee that you mean business. Send your order promptly so as to get your wheel promptly. Our profits are small, and our terms are hard, but we have a grand good wheel to sell, and we can save you money if you can pay cash. You run no risk. If the wheel is not exactly as we represent it, don't pay the Express Co. the \$25. Remember, you examine the wheel thoroughly before you pay for it. Write at once to—

Stanley Mills & Co., Hamilton, Ont.