

Electrical Heating Devices FOR THE HOUSEHOLD



3-pound Flat Iron for Sewing Room or Nursery

RELIABILITY AND ECONOMY

The heating and cooking appliances designed and manufactured by the Canadian General Electric Company mark a new epoch in domestic science in that they employ electricity to generate heat with absolute reliability and (when properly used) with excellent economy. They are SAFE even in the hands of the unskillful, and are practically INDESTRUCTIBLE.

Serviceability has been a SINE QUA NON in the design of these appliances, and they may be expected to withstand about the same treatment that ordinary household utensils receive. They will not "burn out" when the current is thoughtlessly left "on," although such practise is, of course, not recommended. The dishes are made without solder, and the heating unit has remarkably LONG LIFE.

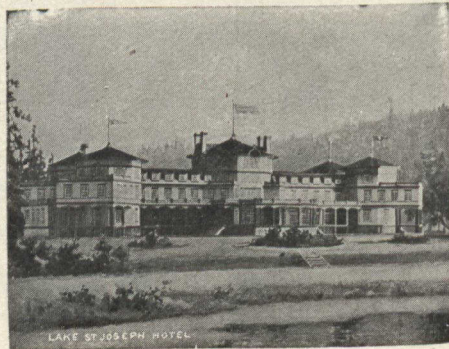


6-inch Stove

The Canadian General Electric Co'y, Limited
14-16 East King Street, TORONTO, Ont.

CANADIAN NORTHERN AND QUEBEC & LAKE ST. JOHN RYS

☐ The NEW and SHORT ROUTE to the FAR-FAMED ST. MAURICE and SAGUENAY RIVERS and to the delightful SUMMER RESORTS and FISHING GROUNDS North of Quebec.



Lake St. Joseph Hotel

☐ A new and delightful Summer Resort, overlooking one of the most beautiful lakes in Canada. Only 50 minutes' ride from Quebec or seven hours from Montreal by the Canadian Northern Quebec Railway.

Hotel Roberval, Lake St. John

☐ Most Northerly Summer Resort in Eastern America. Passengers leaving Toronto at 10.00 p. m. may reach Hotel Roberval, Lake St. John, at 6.55 p. m. following day by this route.

A beautifully illustrated guide book free on application to:

ALEX. HARDY,
G. P. A., Q & L. St. J. Ry.
QUEBEC

GUY TOMBS,
G. P. A., C. N. Q. Ry.
MONTREAL



"Salva-dor"

Does not need to be introduced. It is well known.

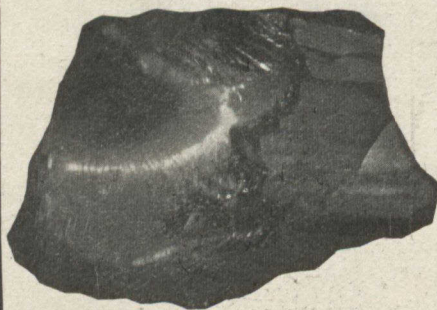
From the time it was ORIGINALLY put on the market it easily led, so far as a Malt beverage was concerned, in the estimation of the connoisseurs. This lead it still holds by reason of the fact that the utmost care is exercise in the selection of the several ingredients that enter into its makeup, namely, the CHOICEST BARLEY, the CHOICEST HOPS, and FILTERED WATER—the utmost cleanliness being observed—all departments being under the superintendence of the ONLY Brewmaster in Canada who came from the original "Salvador" Brewery, Munich, Germany, Mr. Lothar Reinhardt, and so we say

"Salvador" Forever!

REINHARDT & CO.
2 - 22 MARK ST. - TORONTO

GOOD COAL

for you, no matter where you are. Our business is not local by any means. In order to get good results you must burn good fuel. We know our coal has more heat units to the ton than any other coal



on the market, so if you wish to obtain a reliable fuel—a coal which we guarantee to give satisfaction in every respect you might as well stipulate for your coal through your dealer or order direct.

THE STANDARD FUEL CO.
of Toronto, Limited
56 and 58 KING ST. EAST
Tel. M. 4103-4-5

O'KEEFE'S PILSENER



So Light is it and So Good is it that it Stands by Itself.

Brewed Right? Yes, indeed.

Bottled Right? Yes, Positively.

Acts Right?

No one ever said it didn't.

"The Light Beer in the Light Bottle"

The O'Keefe Brewery Co.
of Toronto, Limited