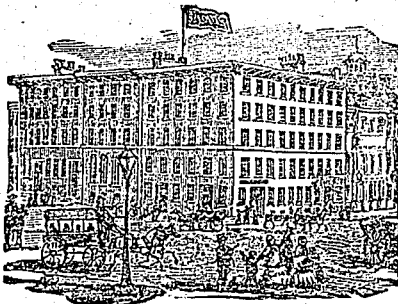


## Hotels.

**ST. LOUIS HOTEL,**  
THE RUSSELL HOTEL CO. PROPRIETORS,

WILLIS RUSSELL, President, . . . QUEBEC.

This Hotel, which is unrivalled for size, style and locality in Quebec, is open throughout the year for pleasure and business travel.

**RUSSELL HOUSE,**  
OTTAWA.

This Hotel is fitted, furnished and kept as an exceptional, first-class Hotel. It has ample accommodation for five hundred guests, and is delightfully and centrally situated, being in close proximity to the Parliament Buildings, the Post Office, and all the points of interest.

J. A. GOVIN, Proprietor.

**CANADA HOTEL.**

St. Gsbriel street,

MONTREAL, . . . CANADA.

S. BELIVEAU, . . . A. BELIVEAU,  
MANAGER. . . PROPRIETOR.

Its chambers and menu are not surpassed. Commercial gentlemen and tourists will find it to their advantage to stop here.

Rates reasonable, though first-class in every particular.

## Hotels.

**HOTEL DUFFERIN,**

CORNER OF

CHARLOTTE STREET AND KING SQUARE,  
Saint John, New Brunswick.

GEO. W. SWETT—PROPRIETOR.

The above Hotel was opened to the public on the 20th inst., the anniversary of breaking out of the fire, by GEO. W. SWETT, formerly Manager of the "Victoria" Hotel of this city. Within the past few months the Proprietor has entirely refitted and newly furnished the House. New additions have been built, thereby adding largely to its former capacity. Bath Rooms and other conveniences are on each flat. The location (corner Charlotte street and King Square) is the finest in the city, being within three minutes' walk of all the business centres, and five or six minutes' walk of the Railroad Depôts and Steamboat Landings.

GUELPH, ONT.

**CITY HOTEL,**

Opposite Grand Trunk Passenger Station

JOHN HAUGH,

PROPRIETOR.

Free Omnibus to and from all trains  
for Guests.

Good Stabling and Livery in connection

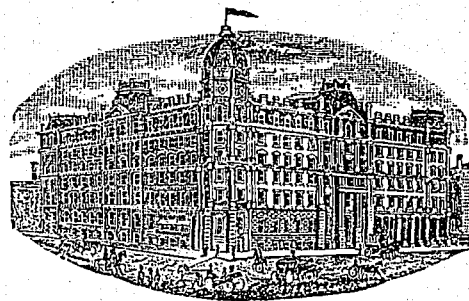
**Mountain Hill House,**

MOUNTAIN HILL, QUEBEC.

This hotel, so well known to the public, has been newly furnished throughout, and offers every comfort to the travelling public. Table superior. Suitable sample rooms for commercial travellers. House located convenient to Railway Depôts and Steamboat Landings. Terms liberal.

E. DION &amp; CO., Proprietors.

## Hotels.

**WINDSOR HOTEL,**

MONTREAL.

THE PALACE HOTEL OF THE WORLD.—Has special advantages for the comfort of guests, with spacious PARLOUR and PROMENADES. Its location is high, which insures pure air, with views of the River and Mountain Scenery.

Has a room for commercial men at 117 St. François Xavier Street.

Rates, \$2.50 per day, and upwards.

R. H. SOUTHGATE, Manager

JAS. WORTHINGTON, Proprietor.

**AMERICAN HOTEL.**

TORONTO.

Rates Reduced to Meet the Times.

Seventy-five Rooms at \$2.00, and seventy-five at \$1.50. The most central and convenient Hotel in the city, both for commerce and family travel. Three minutes walk from the Union and Great Western Depôts; and first-class in every respect, except price.

GEORGE BROWN, Proprietor.

**Agricultural Insur. Co.,**

(A STOCK COMPANY.)

**OF WATERTOWN, NEW YORK,**

CHARTERED IN 1853.

J. A. SHERMAN, Pres. . . . ISAAC MUNSON, Sec'y

DEPOSITED WITH CANADIAN GOVT. . . . \$100,000.

Insures nothing but Farm Property, Churches, Convents, Private Residences and similar risks with contents of same, against Loss or Damage by Lightning as well as Fire.

CASH ASSETS, January 1, 1879. . . . .	\$1,150,063.99
Claims for Losses, Dividends. . . . .	51,440.75
Capital (paid up in cash). . . . .	200,000.00
Unearned Reserve Fund. . . . .	681,977.62
Net Surplus. . . . .	216,645.62

GEO. H. PATTERSON, Montreal, Manager Pro. Quebec.

J. FISHER, Cobourg, Chief Agent, Ontario.

**THE MUTUAL LIFE**

ASSOCIATION OF CANADA.

HOME OFFICE, . . . . HAMILTON.

PRESIDENT—JAS. TURNER. | VICE-PRESIDENT—ALEX. HARVEY.

Deposited with the Dominion Government for the additional protection of Policy-holders, \$50,000.00.

Premiums Absolutely Non-Forfeitable after two Annual Payments, and Profits distributed equitably and entirely among the Policy-holders.

This Company issues Policies upon all approved plans at reasonable rates. A policy-holder insured on the ordinary plans may—after having paid two annual payments—discontinue his Policy and receive his share of the funds in either cash or a paid-up policy. Full particulars will be given on application to the Home Office, or to any of the Agencies throughout the Dominion.

DAVID BURKE, Manager.

WM. SMITH, Secretary.

RICHARD BULL, Superintendent of Agencies.

**THE STANDARD**  
Fire Insurance Company.

Head Office, . . . Hamilton, Ont.

GOVERNMENT DEPOSIT, \$25,000.

This Company has the largest Government Deposit of any purely Provincial Company.

It confines its business for the present exclusively to the Province of Ontario, and limits its Liability on any First-Class Risk to \$3,000.

PRESIDENT.

D. B. CHISHOLM, Esq., Barrister, late Mayor of Hamilton, and Ex-M.P. for Hamilton.

SECRETARY-TREASURER.

H. THEO. CRAWFORD.

WILLIAM CAMPBELL, General Agent Toronto District.