

Opening and Closing the Start Menu

At the left of the taskbar is a button labeled Start. You click the Start button to display the *Start menu*, illustrated in Figure 1-4. The Start menu is the default way to start programs in Windows NT. From the Start menu, you can open a program menu, a menu of the fifteen most recently opened documents, a menu of changeable Windows NT settings, or a Find utilities menu by pointing to the command you want to use. You can also use the Start menu to get help with Windows NT, run a program, or shut down your computer. If you decide that you do not want to use the Start menu, you can *close* it, removing it from the screen.

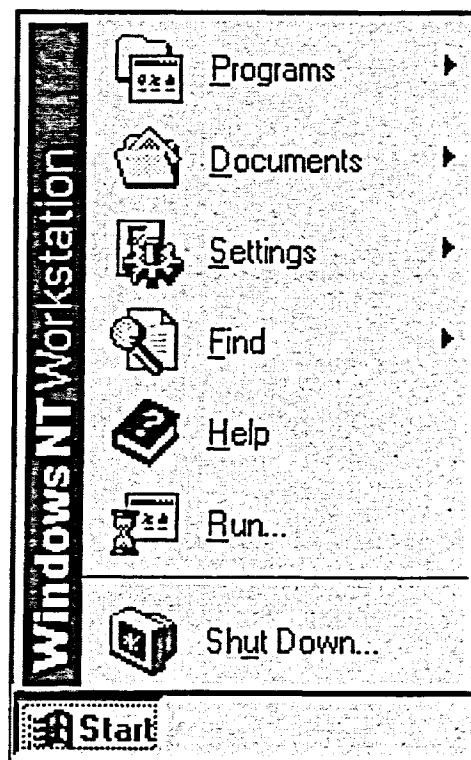


Figure 1-4: *The Start Button and Menu*

METHOD

To open the Start menu:

1. Click the Start button.