

SAVE FUEL

—BY—

COVERING

—YOUR—

Steam Pipes,
Boilers

AND ALL

Heated Surfaces

WITH—

MINERAL
WOOL

Sectional Covering.

—BEST—

Fire-proof Non-Conduc-
tor at present known.

EASILY APPLIED.

Asbestos Goods

OF EVERY DESCRIPTION.

CANADIAN
MINERAL WOOL CO.,
LIMITED.

118 BAY STREET,
TORONTO.

WAGES OF CHINESE FARM LABORERS.

A recent report from China gives this account of the agricultural laborer in that country: "The average wage of an able-bodied young man is \$12 per annum, with food, lodging, straw shoes and free shaving—an important item in a country where heads must be shaved three or four times a month. His clothing costs about \$1 per annum, so that he may save, if he wishes, \$8 per annum. Thus in ten years he may buy one-third of an acre of land (value \$150 per acre) and necessary implements. With this land he can support himself. In ten years more he may double his holding and become a part owner in a buffalo to assist him in cultivating it. In six years more he should, with economy, be able to buy a wife and live comfortably on his hard-earned estate. This is, of course, an extreme case, the young man commencing with nothing and receiving no assistance from his family; and to gain a competence in 26 years under these circumstances would perhaps not be easy in more favored lands."

Apple growers in Tasmania made a determined effort to compete in European markets with the apple growers of Canada and New England, but have finally abandoned the effort because of the heavy freight charges, says *Mechan's Monthly*. The apple growers of North America will always have an advantage in the high coloring which the climate gives to their fruit. Australian apples generally have a good flavor, but beauty always scores a point.

The suspension the other day of the British Columbia Bank of Green, Worlock & Co. is not without one or two grains of comfort. In addition to being the first bank suspension in the Province, the bulletin which the managers issued to the public declared that the disaster was due to no depression on the Canadian side of the border, but only to the reflecting action of the financial depression in the United States. Furthermore, the managers believed that if their assets could be got in with care and without undue pressure they would cover all indebtedness and leave a surplus. Judging by the manner in which news of the failure was received in Victoria the suspension has not broken public confidence in the reputation of the firm, so that any embarrassing interference with the settlement of the firm's affairs was out of the question from the first.—*Toronto Empire*.

W. J. STEIN,

Chartered Accountant and Auditor,

513 COLUMBIA ST., NEW WESTMINSTER.

—AND—

P. O. Box 636, VANCOUVER.

A. LEOFRED,

(Graduate of Laval and McGill.)

MINING ENGINEER.

MAIN OFFICE: Quebec. BRANCH OFFICE:
Sherbrooke, Montreal, 17 Place d'Armes Hill

MINES, MINERAL PRODUCTS

ALLICE & AULT,

WHOLESALE

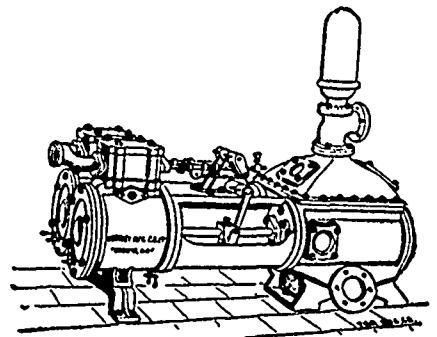
Produce and Commission
Merchants.

75 WHARF STREET, VICTORIA.

SOLE AGENTS

Clover Leaf Brand of Cream-
ery Butter which was awarded
the medal and diploma at the
World's Fair, Chicago, 1893.

PUMPING MACHINERY.



DUPLIX OR SINGLE

WRITE FOR PRICES.

—O—

NORTHLEY M'FG CO.
LIMITED.

TORONTO.

—O—

CATALOGUE ON APPLICATION.



CAN I OBTAIN A PATENT? For a prompt answer and an honest opinion, write to MUNN & CO., who have had nearly fifty years' experience in the patent business. Communications strictly confidential. A Handbook of information concerning Patents and how to obtain them sent free. Also a catalogue of mechanical and scientific books sent free. Patents taken through Munn & Co. receive special notice in the *Scientific American*, and thus are brought widely before the public without cost to the inventor. This splendid paper, issued weekly, elegantly illustrated, has by far the largest circulation of any scientific work in the world. \$3 a year. Sample copies sent free. Building Edition, monthly, \$2.50 a year. Single copies, 25 cents. Every number contains beautiful plates, in colors, and photographs of new houses, with plans, enabling builders to show the latest designs and secure contracts. Address MUNN & CO., NEW YORK, 361 BROADWAY.