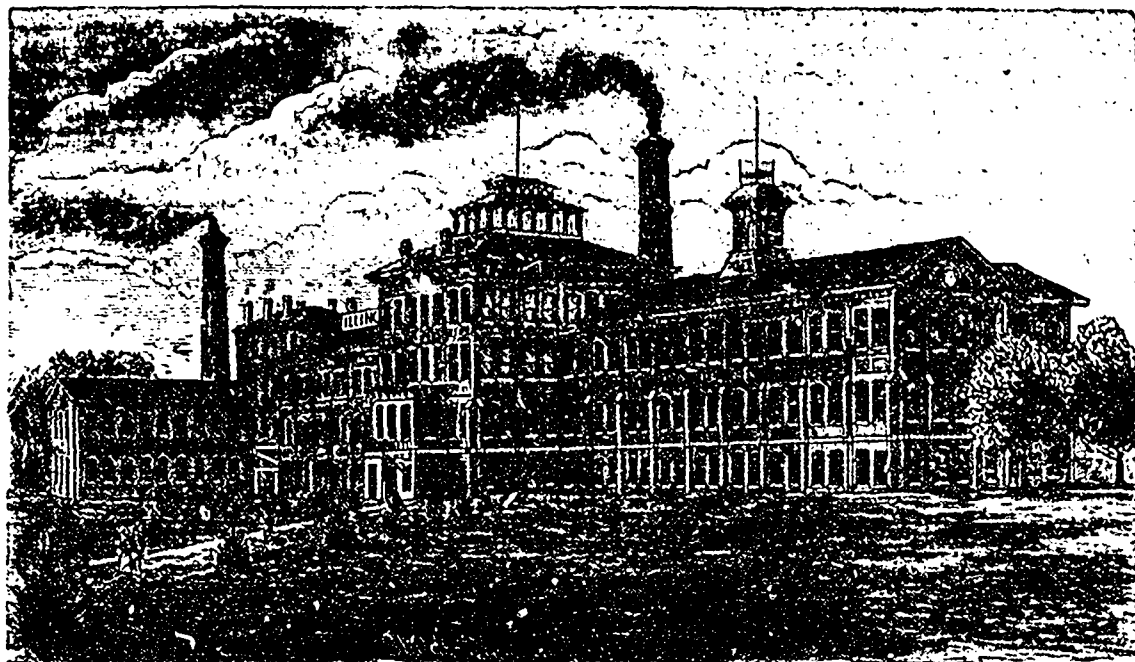


# ILLINOIS WATCH FACTORY,

—AT—

*SPRINGFIELD, ILLINOIS, U. S. A.*

**CAPACITY 500 WATCHES PER DAY.**



ESTABLISHED 1870.

All Movements have Patent Pinion, and all are Quick Train. All Stem Winders made to fit Hunting and Open Face Cases, the latter bringing the figure XII at the pendent.

Orders for Movements with special engraving in grades above I. W. Co., received in lots of five and upwards without extra charge.

Special attention is called to our I. W. Co., which is the only low-priced Movement in the market having all the following improvements:—

**SUNK SECONDS DIAL, PATENT PINION, DUST BAND, QUICK TRAIN, EXPANSION  
BALANCE, TEMPERED HAIRSPRING.**

**OUR No. 5 IS THE CHEAPEST ADJUSTED, FULL JEWELLED, PATENT REGULATOR MOVEMENT MADE.**

Our No. 150, Ladies' 8 size Watch is of superior finish, low-priced, and guaranteed

## THE BEST CHEAP LADIES' WATCH EVER PRODUCED.

For full information please consult our advertisement in last July's issue of THE TRADER.

**DONT FAIL TO SEE THIS PAGE NEXT MONTH.**