

THE New Brunswick antimony mines at Lake George, near Fredericton, were, a short time ago, sold by public auction under a mortgage given by the mining company. The trustees bought them in for \$6,000, though they have no intention of working the mines.

A COMPANY is in process of organization which is to be known as the Nova Scotia Gold Mining & Smelting Co., for the purpose of treating some tailings at the head of the northwest arm of St. Mary's Bay. Capital stock, \$50,000, and the promoters state that the probable profits will be \$36,000 per year.

THE Summer School in connection with the School of Mining, Kingston, has been attended by an enthusiastic class of students, most of whom are teachers in high schools and collegiate institutes. E. C. Storey, M.A., (of Hawaii), and F. J. Pope, M.A., are engaged in original investigations. Others are studying mineralogy, assaying chemical, analysis, and crystallography.

Wm. McMillan, Mgr. Jno. S. Tower, Supt. H. S. Burrell, Sec.-Treas.

The Mac Machine Co.

BELLEVILLE, Ont.

Manufacturers of and Dealers in

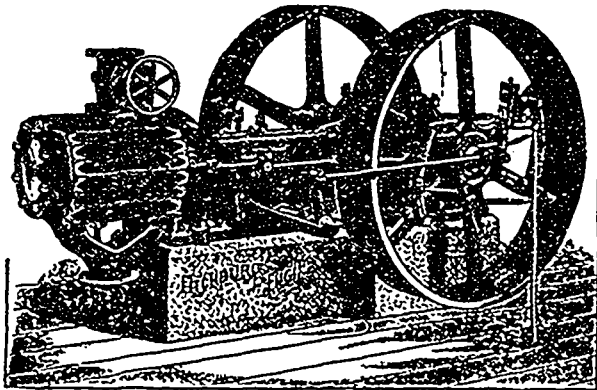
Rock Drills, Hoisting Engines, Boilers, Wire Rope
Rubber Hose and Couplings, Batteries, Fuses

COMPLETE PLANT OF

MINING, TUNNELING AND QUARRYING MACHINERY

Burrell-Johnson Iron Co., Ltd.

YARMOUTH, Nova Scotia



Sole Manufacturers for Canada of the

FITCHBURG AUTOMATIC HIGH-SPEED ENGINES

Closest Regulation. Closest Economy. Very Best Stock and Work.

Adapted for Electric Lighting and all places where a reliable High-Speed Engine can be advantageously used.

Of the Fitchburg Engine now running in the power house of the Yarmouth Street Railway Co., Mr. J. S. Skinner, engineer of the company, writes: "The Fitchburg engine installed by you is giving perfect satisfaction. It is very neat in appearance, strong and durable. It runs perfectly cool and noiseless, and as for workmanship and close regulation there is no better. Our voltage stands the same, let it be light or heavy loads. As all know the sudden change of load to which a street railway generator is liable, I think the engine gives as near perfect regulation as can be had."

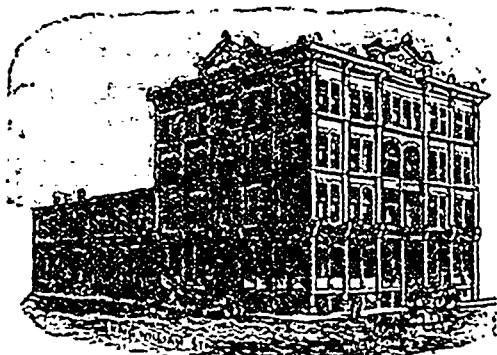
WOOD, VALLANCE & CO.

WHOLESALE HARDWARE MERCHANTS

Mechanics' Tools,

Plumbers' and Steam Fitters' Supplies,

Machinists' Fine Tools, etc.



HAMILTON, ONT.

LEANDER SHAW, of Hantsport, N.S., and E. W. McVicar, of Tennycupe, have purchased a mine near Kootenay Lake, in which the vein shows 14 to 18 inches wide of solid ore and about 2½ feet of poorer ore. Assays show 75 per cent lead, 40 oz. silver, and 5 to 7 dwts. gold to the ton, amounting in total value to about \$80.

THERE is every evidence to show that Carpenter creek is going to follow the lead of Four-mile creek. The near approach of the railway is causing a general revival of mining all over the country. Five additional men have been put to work on the Alamo, bringing the total at work on that property to seventeen. The Slocan Star is about to double its force. Byron White expects to have a hundred men at work during the coming winter. A force of men has been put on at the Blue Bird, under the direction of Mr. Taylor, who has a large interest in the property. The Idaho and the Dardanelles will both start up again within the week. Excavation for the foundation of the Alamo concentrator will be begun in a day or two.—Victoria Colonist

The Steam Boiler & Plate Glass Ins. Co. OF CANADA.

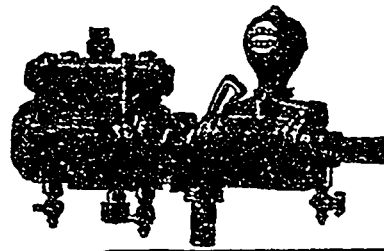
Head Office - LONDON
Subscribed Capital, \$200,000.00. Full Government Deposit.



DIRECTORS:
E. JONES PARKE, Q.C., President F. A. FITZGERALD, Esq., Vice-President
HON. DAVID MILLS, M.P. JOHN MORISON, Esq. T. H. PURDOM, Esq.
JAMES LAUT, Manager J. H. KILLEY, Consulting Engineer
JOHN FAIRGRIEVE, Chief Inspector

The unexpected generally happens. It pays to know that you are safe. Don't trust to luck. Have your boiler inspected and insured. Will your boiler stand the pressure at its weakest point? Inspection makes you safe; Insurance indemnifies you against loss.

The MARSH Steam Pump



... Specially adapted for Boiler Feeding. It returns its exhaust into feed water, heating it from 40 to 50 degrees. All sizes, and with capacity ranging from 200 to 1,500 gallons per hour. Send for Catalogue. We also manufacture Engines and Boilers, all sizes Grist and Saw Mill Machinery, Water Wheels, Shafting, Hangers and Pulleys, Steam Launches, Shipman & Acme Coal Oil Engines and Boilers, both Stationary and Marine.

... Write for Particulars ...

JOHN GILLIES & CO.

MANUFACTURERS

CARLETON PLACE, Ont.

CABLE AND TELEGRAMS,
"SMART, KIDWELLY."

ESTABLISHED
1874.

H. & H. E. SMART (FORMERLY GEORGE REDFORD & Co.),
KIDWELLY, SOUTH WALES.

"R. DINAS" FIRE BRICKS AND SILICA WORKS.

IMPORTANT NOTICE.

To all our friends using "Dinas" Fire Bricks, whether for Glass, Blast, or other Furnaces:—

Hearing other Silicate Fire Bricks are being pushed on your market bearing a similar brand, we respectfully desire you to note that we are the manufacturers of the original "R. DINAS" Brand of Silicate Fire Bricks.

Enquiries for Bricks, Gannister and Cement, may be sent to our sole agent,

R. E. H. GARDNER BUCKNER,
Toronto, Ont.

for prompt attention.

(Signed) H. & H. E. SMART,

Proprietors of the original "R. Dinas"
Silicate Fire Brick and Fire Clay,

KIDWELLY, Wales.