

Lord Kitchener, Johannesburg Morning Post reports the occurrence of skirmishes in the war fields. The at Amersfort, when Major W. J. S. Pens were in command Christian Opperman's drove the Boers after considerable which the Somerset suffered severely. 18 men were killed and 23 men were taken prisoner. Colenbrander surgeon Louw's laager at 5th, killing five 29. Lord Kitchener minor surprises several French reports Cape Colony are so as to require only a system to keep the week's totals of the 36 men killed, 9 prisoners and 72

The trial began here today of the Austrian cavalry of dividing military government, in he is alleged to 000. Captain Carina, and said he never access to the in he was accused of

WRECKAGE.

nt to Make a Tour of
vestigation.

SEND, WASH., Jan. 7.

revenue cutter Grant
ning for an extended
shores of the Straits of
and also along the coast
lattery, to examine the
of wreckage reported
during the past two
believed that many ves-
with disaster during the
which have prevailed
25th, as the Indians
to Neah Bay of new
shore south of Cape
Tonier of the Grant
ur of investigation for
ascertaining, if possible,
the vessels from which
ckage came. The steam-
de, arriving from Neah
ports last night's storm
as being of great vio-
Cape Flatly the wind
the velocity of a hurri-
cane in the vicinity of
the shelter in Port Angeles

TNEY'S HORSES.

as Atlantic Like Saloon
assengers.

an. 7.—The Atlantic

eamship Minnehaha ar-
aving on board William
Derby candidate Nas-
s Peg Woffington colt,
ated throughout the
saloon passengers, ar-
condition. The horse
tomorrow will be tak-
in to Newmarket. Cot-
racing prospects of it
es, the London S
Whitney's horses a-
ly in 1902, which, it
were not in 1901, though
Whitney nor his trainer
accountable for their
orm, there is no doubt
ictory, if he is the vic-
thoroughly popular.

ROSSLAND WEEKLY MINER.

Two Dollars a Year

ROSSLAND, B. C., THURSDAY, JANUARY 16, 1902

Seventh Year, Number 12

FIGURES GO HIGHER

THE OUTPUT FOR THE PAST WEEK SHOWS A GOODLY INCREASE.

HEAVY SHIPMENTS FOR LE ROI AND LE ROI NO. 2—CASCADE BEGINS.

The week ending last night showed a substantial increase in the ore shipments for the camp, the aggregate output being 5830 tons. Of this the Le Roi produced 4500 tons and the Le Roi No. 2 1300 tons. The Cascade mine on St. Thomas mountain enters the shipping list for the first time with 30 tons to its credit. The shipment was made on Friday, and the company figure on sending out 60 tons per week as long as the sleighing continues.

THE OUTPUT.

Mine	Week	Year
Le Roi	4500	7200
Le Roi No. 2	1300	1950
Cascade	30	30
Totals	5830	9180

Work has progressed steadily in all the mines. A feature of the week has been the introduction of a number of additional steel ore dumps to the rolling stock of the Red Mountain railway. This will enable the mines to increase their tonnage at will, the big cars having a substantially larger capacity than the ordinary rolling stock.

Le Roi.—The usual stoping and developing operations have been under way steadily, and excellent progress has been made. The drifts on the 900 foot level have been pushed ahead, and the preliminary work in the shaft at the 1050 foot level is almost completed. The latter feature will permit of the resumption of sinking at an early date. Men for the mine are now hired at the Black Bear tunnel at the hour specified in an advertisement appearing in another column.

Le Roi No. 2.—It will be seen from the shipping list for the week that stoping operations in the No. 1 and Josie mines of the Le Roi No. 2 group have been especially active, and that the average tonnage to be produced weekly for the next few months until another advance is made. Development has also been carried on steadily along the usual lines, those of opening up the ore bodies at the lower levels. The result of the development has been eminently satisfactory.

Nickle Plate.—Development work only has been carried on at the mine, but this has made steady progress and good results have been obtained. Kootenay.—About 20 men are employed at the property during the development by contract. The drifts on the 400 and 600 foot levels have gone ahead during the past week rapidly, and the ore bodies are showing up in a most satisfactory manner.

Centre Star.—The week's work has been confined to the leveling of the shaft, and special shipments will be resumed on or about the end of the month. The principal features of the development have been the extension of the east drift on the 600 foot level and the sinking of the shaft. In both respects marked advances have been made.

Sitzze.—A start has been made on the crosscut to the north on the 100 foot level. After the company has opened up the ore body as far as desired in this direction it is expected that sinking will be resumed at once, and the announcement of this effect may be looked for at an early date.

White Bear.—The operations have been confined exclusively to the shaft, and steady progress has been made without incident of special interest. New St. Elmo.—No work has been performed at the mine during the week, but special reference is made to the property elsewhere in this issue.

Abe Lincoln.—Reference is made to the Abe Lincoln elsewhere in this issue of the Miner.

Green Mountain.—Work has been started on the 200 foot level of the mine, and the shaft and this will be sunk without cessation to the 200 foot level. On the conclusion of this programme the company will, as has been stated, consider the question of the advisability of continuing to the 500 foot level without crosscutting.

ROBBED A POOL ROOM.

The Exploit of Two Young Men in Kansas City.

KANSAS CITY, Mo., Jan. 13.—Two young men with handkerchiefs tied across the lower portion of their faces entered Harry B. Chick's pool room this afternoon with drawn revolvers. They commanded the proprietor, the cashier and three others to lie down on the floor. They secured \$2000 and escaped. The proprietor and his assistants were the only persons in the place. The cashier's skull was fractured by a blow he received, and his injury is serious.

TROUBLE AT NEW CHWANG.

Russians are Indulging in Highhanded Proceedings.

PEKIN, Jan. 14.—Paul Lessar, Russian minister to China, has arranged for telegraphic communication between the United States minister here, Mr. Conger, and the consul of the United States at New Chwang. The consul at New Chwang has telegraphed that the Russians there are arresting American naval officers and sailors on groundless charges.

NEW ST ELMO MINE

CAREFULLY LOOKED OVER BY MR. LAKE, M. E., FOR THE SHAREHOLDERS.

A PROSPECT OF WORKING ON A MUCH LARGER SCALE THIS YEAR.

Unless something unforeseen occurs, the ensuing year is more than likely to be among the most prosperous in the history of the city. It is on the cards that not only will the present working mines increase their output and operate generally on a larger scale, but that several new ones will be started, among the most important will operate on such a scale as to substantially increase their value from the standpoint of citizens. Among the latter is the New St. Elmo.

Among the visitors to the camp during the week was Samuel Lake, mining engineer of New York, representing some of the most prominent shareholders of the New St. Elmo. Mr. Lake made an exhaustive examination of the mine and left yesterday for Nelson, where he has other business to attend to in connection with the interests of eastern clients. Mr. Lake did not make a statement for publication while in the city, but it is intimated that he was thoroughly satisfied and pleased with the outlook for the New St. Elmo, and that his report to his principals is likely to have an important effect on their future conduct of the mine. He is understood to have stated that the size and quality of the veins on the New St. Elmo were such as to indicate the presence of splendid ore deposits when the levels were reached at which such bodies might be expected to exist, and it is expected that he will recommend his principals to push the development of the property on a much larger scale than has heretofore been followed. In this event it is probable that when work is resumed it will be with a crew of 20 to 30 men, and that the development of the property will be gone into extensively, probably in the direction of sinking at the eastern end of the claim.

The New St. Elmo is so situated that with the construction of some 2,000 feet of tramway the ore could be delivered on either of the railroads at a cost of a few cents per ton for handling between the mine and railroad. The mine has already been developed with several thousand feet of horizontal workings, and the high grade copper ore already shown up gives promise of a bright future.

ON THE GOLDEN CROWN

A Good Strike of Ore—Force in Granby Mines Increased.

PHOENIX, Jan. 8.—Work on the Brandon and Golden Crown mine in Wellington camp is being carried on by Superintendent D. H. Duncanson and a force of 18 men. The property is looking well, and a strike of good ore was made at the 100-foot level the other day. The ore body is now ten feet wide, carrying values chiefly in gold, and cross-cutting is still being prosecuted, so far only one wall having been found. As soon as an equitable freight and treatment rate can be secured it is the intention to start shipping on a small scale at this rate of about a car a day. This can easily be done with the equipment on hand, and the returns will go a long way toward helping out the running expenses of the mine.

H. N. Galer, acting general manager of the Granby company, has been in town the last few days on a tour of inspection. Charles Bontor, who broke his collar bone while skating some little time ago, is progressing favorably. His many friends are glad to see the genial Charles about once more.

On Monday it is the intention of the Granby company to put on more men, as by that time the smelter will be in full blast and the ore shipments from here will have so materially increased to meet the enlarged smelter capacity. Daniel Rice, of Rice Bros., Grand Forks, who is on the road for a time for the Ingram-Muir company, was a visitor in town yesterday.

STRIKE ON THE CONTACT.

Another Promising Mine in the Gladstone District.

An important strike has recently been made on one of the properties owned by the Contact Consolidated Gold Mines, limited, in Contact Basin, near Gladstone. A crosscut tunnel was driven 230 feet, which cut the No. 1 vein at a depth of 163 feet, showing the vein to be at this point four feet in width, the whole of which carries good values in gold and silver. The ore is a quartz gangue carrying iron sulphides and gold and silver tellurides, with no copper. There is now practically in sight some 4,000 tons of high grade ore in this vein alone, which could be ready for shipping in a short time were transportation facilities at hand. This property was once owned by the Mother Lode Mines, but now belongs to the Contact company, who have had a force of men working on it since June last.

A wagon road two and a half miles in length would give connection with the Columbia Western railway, and as there are quite a number of very promising properties in the Basin it is to be hoped one will be built this coming summer. This district seems to have a bright future in front of it. Lately the Cascade and the Roseland Bonanza mines started shipping, now we have the Contact about to enter the list also, and it is expected that one or two more will be added before the year 1902 goes out.

AT THE ABE LINCOLN TO SHIP THEIR ORE

THE EXPERIMENT WITH THE ELECTRIC DRILL PROVES A FAILURE.

MACHINE TRIED IS TOO LIGHT FOR THE WORK IN ROSSLAND CAMP.

The experiments at the Abe Lincoln mine with the Gardner electric drill have been concluded, and the result is not favorable to the machine, which will be taken out by the manufacturers. The experiments were inaugurated several weeks ago and the apparatus has been given a thorough test. The general diagnosis of the causes of the failure is that the drill tested was not heavy enough for the work to be done. It is the medium weight machine made by the company and is undoubtedly unsuited for the conditions existing in the Roseland camp. The same machine has been thoroughly tried in other camps and found to give every satisfaction, but the rock encountered in Roseland was too much for it, and it failed to do the work. The Gardner people sent an expert machinist, Mr. Rothschild, to set up the drill, and in his opinion the heavier pattern of the machine constructed by the company would answer the purposes of the Roseland camp.

The experiment conducted at the Abe Lincoln was of especial interest to mining men, as if successful the Gardner electric drill would have proved invaluable to many of the smaller properties in the camp. Its strong point is that no intermediate machinery is required beyond a minor contrivance for changing the current from alternating to direct, the cost of which is unimportant. The current is conducted to this apparatus and from it to the drill without further plant, and the drill is operated with the unusually low rate of two horsepower, while a compressor plant for a similar property would require probably not less than 50 horsepower.

While the drill was in operation at the Abe Lincoln the south drift on the 200-foot level was run in about 25 feet from the shaft. It is the intention to continue this drift by hand work in the meantime for some 280 feet altogether, for the purpose of tapping a known ore body at that distance. Later a drift may be run on the north side of the shaft.

HE CHOPPED IT DOWN

PREMIER DUNSMUIR WAGING WAR AGAINST MANAGER CROFT.

REPORT OF A SERIOUS ACCIDENT TO THE WAR VESSEL AMPHION.

VICTORIA, Jan. 13.—On Saturday night Superintendent Jos. Hunter of the E. & N. railway, with a gang of men from up the line, went down to Sicker Sliding and demolished the false work which Henry Croft had erected over the railway for the purpose of connecting the final spar connecting his railway down the mountain from the Lenora mine with the section already completed from the railway out to the new smelter at Osborne Bay. Lines from a locomotive were attached to the work, but the engine was unable to budge it so strongly was it built. The false work was 21 feet clear of the track, thus complying with the law. Mr. Dunsmuir has been bitter against Mr. Croft, who is his brother-in-law, since the latter got smelter men interested, thus depriving him of the carriage of \$7 a car on Lenora ore to Ladysmith, where it was formerly shipped to Tacoma. The Lenora is turning out more ore than ever, but the dump is being made at Sicker Sliding awaiting the completion of the smelter. Sympathy here is entirely with Croft, who has developed the Lenora into a fine property in the face of great difficulties. He expresses confidence that the railway committee will uphold him.

A special from Alberni states that the schooner lost off Carmanah, as reported by Lighthouse Keeper Daykin, was the schooner Nannie E. Paine. There is no such vessel known here. The Annie E. Paint belongs to this port, but she has not yet gone out. The government has under consideration the appointment of a commission to inquire into the whole question of the salmon fisheries in British Columbia.

News has been received here by letter to the effect that H. M. S. Amphion struck a reef while on her way from Panama to Callao and was rather seriously damaged, but how badly the letters do not state. As the drydock at Callao was occupied she proceeded to Valparaiso for repairs. The steamers Rosalia and Majestic will hereafter call at Fort Angeles on their way to and from Victoria.

Geo. Riley was tonight nominated by the Liberals to contest Victoria in the bye-election for the Dominion house. Mr. Riley was defeated at the general election, and the other defeated Liberal candidate, Mr. Drury, nominated Mr. Riley at the convention tonight.

The Czar and Czarina inquired particularly concerning President Roosevelt, with whose career they showed themselves to be perfectly familiar. Their majesties expressed the highest opinion of Mr. Roosevelt's character and achievements.

THE MINES ON ST. THOMAS

MOUNTAIN COMING FORWARD RAPIDLY.

CASCADE NOW SHIPPING AND THE BONANZA GETTING INTO SHAPE.

E. J. Balfour, president, and H. W. C. Jackson, secretary-treasurer of the Roseland Bonanza company, returned yesterday from a trip of inspection to the Bonanza mine. Mr. Jackson said: "It was Mr. Balfour's first visit to the company's property, and he was very favorably impressed with the Bonanza and its neighbor, the Cascade. The Bonanza crew, which will be increased to six men by Tuesday, is stopping and sorting ore for shipment and has a nice lot of \$25 ore ready to market. The stope, which is about 60 feet long, is looking very well, the ore body being considerably wider than it was in the roof of the tunnel. It has about 100 feet of backs.

Shipments from the Bonanza will begin just as soon as the freighter has relieved the glut of ore at the Cascade. That property shipped its first car of ore today and has about 150 tons more sorted and ready for shipment which is now stored in the ore bins and in the upraise from the tunnel. Superintendent Purcell has 12 miners at work and will put on a few more as soon as the upraise is cleared of ore, when the mine ventilation will be much better than it is at present. "The wagon road is in first class shape and Mr. Nesbitt, the freighter, is hauling 150 tons at a load with each four-horse team. He intends to put on a third team right away."

BIG LOSS BY FIRE.

Some Fine Buildings in Manchester, N. H., Destroyed.

MANCHESTER, N. H., Jan. 14.—The destruction of the Kennard, a granite structure considered to be the finest business office building in New England, north of Boston, proved to be the worst fire in many years, the loss being around half a million. Besides the Kennard, the Smythe block was practically ruined and considerable damage was done to the home of the Derryfield club. In the Smythe block were the Park theatre, occupied tonight by J. Z. Little's dramatic company, the World printing office and two banks. The fire started just about 9 o'clock in the clothing store of Allan & Kimball. The first warning that the occupants of the Kennard had was an explosion that resounded through the city like a cannonading. At the time the board of trade was in session, and the moment the explosion was heard a rush for the exits began. The heat was so intense that the men had to fall back and give their attention to the surrounding buildings. Despite all they could do, the flames jumped across the street and set fire to the Smythe block. When one of the rear walls of the Kennard fell, the roof of the extension of the Derryfield club main building. Much other adjoining property was considerably damaged by both fire and water.

The cause of the fire is believed to have been located in the new electrical connection in Allen & Kimball's store. The chief figures of loss are given as follows: The Kennard, \$250,000; Smythe block, \$20,000; Sicker Sliding and demolished the false work which Henry Croft had erected over the railway for the purpose of connecting the final spar connecting his railway down the mountain from the Lenora mine with the section already completed from the railway out to the new smelter at Osborne Bay. Lines from a locomotive were attached to the work, but the engine was unable to budge it so strongly was it built. The false work was 21 feet clear of the track, thus complying with the law. Mr. Dunsmuir has been bitter against Mr. Croft, who is his brother-in-law, since the latter got smelter men interested, thus depriving him of the carriage of \$7 a car on Lenora ore to Ladysmith, where it was formerly shipped to Tacoma. The Lenora is turning out more ore than ever, but the dump is being made at Sicker Sliding awaiting the completion of the smelter. Sympathy here is entirely with Croft, who has developed the Lenora into a fine property in the face of great difficulties. He expresses confidence that the railway committee will uphold him.

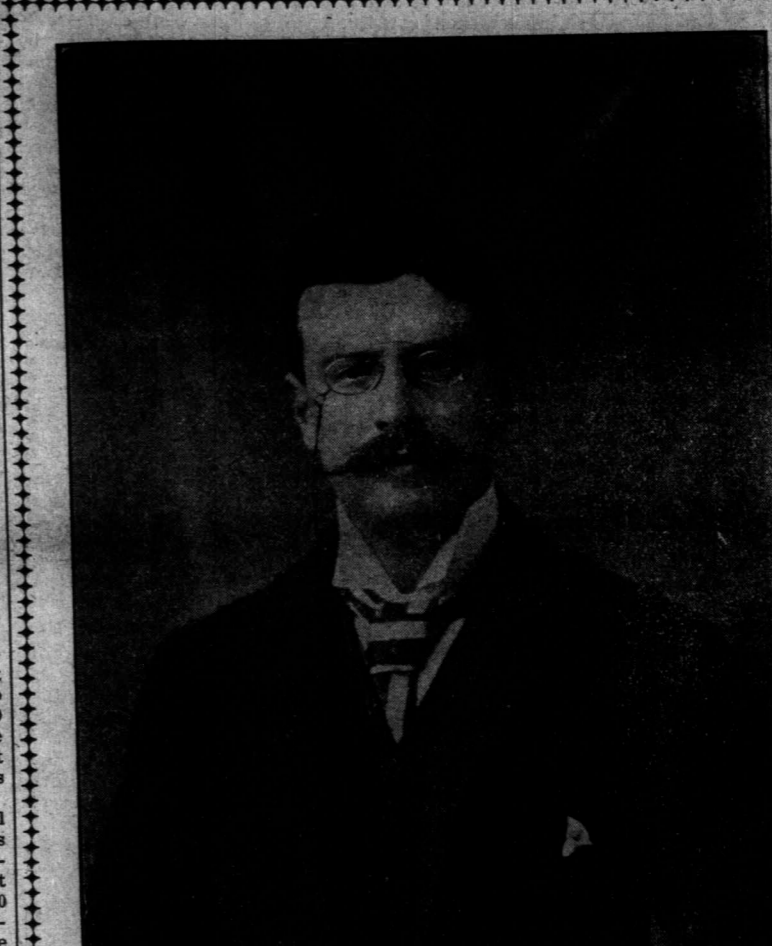
ACCUSED OF MURDER.

Serious Charge Laid Against a New Hampshire Farmer.

NEWPORT, N. H., Jan. 14.—George H. Briggs, an elderly prosperous farmer of Langdon, was placed on trial today charged with the murder of Mrs. Florence Jones, a neighbor. Two witnesses were called during the day, both children of the murdered woman, Cleveland Jones, 16 years old, said that on November 2, while in a field driving some stray cattle, Briggs, who was also there, accused him of murdering the case. He said that they called each other names, and Briggs threatened to shoot the whole Jones family. Later Briggs appeared at the Jones home with a revolver, and when Mrs. Jones went to the door property, she following her into the kitchen and firing two more shots into the prostrate woman. Annie Jones, aged 14, corroborated her brother's testimony. The trial will last some days, and interest in it is keen because no reason is known for Briggs' act except a dispute between neighbors over the right of way of a road.

STATES AND RUSSIA.

WASHINGTON, Jan. 14.—At the Russian New Year's reception, the Czar and Czarina took occasion to express to the United States ambassador, Clarence Tamm, the gratification which they felt at the reports of good feeling in the States toward Russia which they constantly received. Their majesties wished the Americans to understand that the feeling was reciprocated by both themselves and by the Russian people. The Czar and Czarina inquired particularly concerning President Roosevelt, with whose career they showed themselves to be perfectly familiar. Their majesties expressed the highest opinion of Mr. Roosevelt's character and achievements.



ALD. JOHN STILWELL CLUTE
Who will be Rossland's next Mayor.

THE TRAIL SMELTER IN THE OTHER CITIES

INSTALLATION OF THE NEW CANDIDATES FOR THE OFFICES OF MAYOR, ALDERMEN AND TRUSTEES.

WORK ALREADY COMMENCED ON THE SITE FOR THE LEAD REFINERY.

Operations are practically suspended at the Canadian Smelting Works pending the completion of the installing of the new sampler. In the meantime the payroll includes the men engaged in this work, the carpenters and masons, the complement of men required to operate eight hand roasters and a surface gang. The new machine is all on the ground, and good progress is being made with its installation. The apparatus is the most modern crusher manufactured, and will have a capacity of 1500 tons in ten hours. This will place the plant in a much more efficient condition than could be attained with the old sampler, which could not be forced beyond a speed of 1000 tons in 24 hours. All the automatic appliances evolved in recent years are included in the new sampler, from the upper section, into which a carload of raw ore is dumped from the elevated railroad track, to the exit through which the crushed material emerges.

A surface gang has started work on the site for the refinery, on which work is to be rushed ahead as rapidly as possible. The refinery will be located some 400 yards from the main works, and will be connected therewith by a tramway operated by electricity, over which the matte will be transported to undergo the refining process. The changes at the smelter proper are being conducted rapidly, and the plant should be in readiness to blow in its copper and lead furnaces by the first of the month, when the War Eagle and Centre Star will commence shipments on a large scale.

DEBENTURES SOLD.

NEW YORK, Jan. 14.—It was stated at the office of J. F. Morgan & Co. today that the entire issue of \$30,000,000 in new four per cent debenture bonds of the Atchison, Topeka and Santa Fe company had been sold.

TO COMMENCE SHIPPING.

The Miner is informed that it is the intention of the management of the Centre Star and War Eagle mines to commence shipments on a large scale to the Canadian Smelting Works at Trail on or about the first of February. The doubt as to the exact date of commencing shipments arises from the fact that alterations are being made to the smelter plant in the hope of improved machinery, and it is not definitely determined as to whether these changes will be completed on the date specified. The fact that two more of Rossland's big mines are to re-enter the shipping list within a fortnight will be received with great pleasure. Last year during the six months in which shipping was continued the Centre Star and War Eagle sent out over 70,000 tons of ore, and it has been estimated that their joint production for the ensuing year should easily reach 130,000 tons.

A BUILDER—ARE YOU LOSING WEIGHT?

"The D. & L." Emulsion will always help and build you up. Restores proper digestion and brings back health. Manufactured by the Davis & Lawrence Co., Ltd.