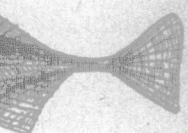


Police in Ontario and
Enough has been
if any proof were
with the fact that
country finds itself
important and essential
means of enforcing the
do not come within
es.
in this war as pro-
le? If not the reason
uate system of law-
good example. Can

y.
A.
own Miramichi Bay
across some things
nature. We went
we found quite an
were attached either
and they were to be
k to some consider-
On climbing the
h were carved into
and entering the
ound several species
the Bay-breasted
molia Warbler, and
common, or fairly
outhern portions of
orth to breed. The
ight blue back and
th a band of burnt
uite abdomen, was
g tufts of the lichen
red to as "hanging
on on the Spruces
Provinces, and is
fellow refers in the
ngeline, where he
and the hemlocks,
shes and the White-
on and singing as
s northern country.



pin.



ack.

Baie de Vin and
orning we made a
of the Vin River
spined Sculpins,
Eel, and a large
is a very common
pearance, as may
d the long spines
the deep. It is
gest of scientific
us, a name
es to be "taken to
" and "cottus,"
and the second
Of the Stickle-
n our haul three
onest being the
2. The Stickle-
water and they
breeding habits.
globular hollow
ts, built in the
the female has
le stands guard
great ferocity,
ly set.
reds of salmon-
g out from the
tside the islands
in drifting for
ng of a gill-net,
to any stakes,
at is made fast
for some hours.
and some idea
i Bay may be
lay the steamer
y of the points
salmon. And
ught that day,
ht miles up the
m are collected
ately has been
ounds.



The Beginning of Harvest.