

"And, thank God, we take our own horses!" said Brammle fervently.

"Bet you a thousand the other end's Marseilles!" said Warrington. "We're it luck. They'd have mounted us on bus-horses if we hadn't brought our own; we'd have had to ring a bell to start and stop a squadron. Who wouldn't be light cavalry?"

Kirby put the sealed letter in an inside pocket.

"I'm going to sleep," said Brammle, yawning. "Night, sir!"

"Night!" said Kirby; but Warrington stayed on. He went and stood near the window, and when Kirby had seen Brammle to the door, he joined him there.

"What now, Warrington?"

"Caught 'em grooming Ranjoor Singh's charger in the dark!"

"Why?"

"Said it was an order from Ranjoor Singh!"

"I'm getting tired of this. I don't know what to make of it."

"That isn't nearly the worst, sir. Listen to this! Long before Yasmini promised us—before we—knew to save his life and honor—Ranjoor Singh had sent a message to his squadron guaranteeing to be with 'em before the blood runs! Specific guarantee, and no conditions!"

"Then—"

"Exactly, sir!"

"She fooled us, eh?"

"D'you suppose she's for or against the government, sir?"

"I don't know. Thank God we've got our marching orders! Go and wash your head! And, Warrington—hold your tongue!"

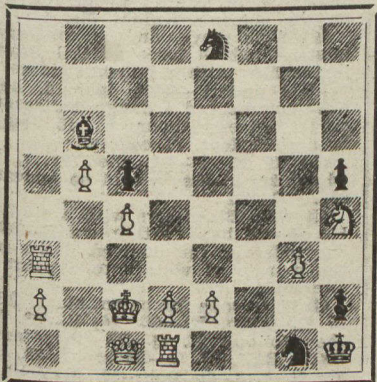
Warrington held up his right hand.

"So help me, sir!" he grinned. "But will she hold hers?"

(To be continued.)



PROBLEM NO. 188, by F. Kohnlein.
Akad. Monatsheft, 1908.
(Annihilation theme.)
Black.—Seven Pieces.



White.—Eleven Pieces.

White to play and mate in three.

Problem No. 189, by Karel Traxler.
Second Prize, Cesky spolek sachovni, 1900.
(Theme: Chameleon Echo.)

White: K at KKt8; Q at Ksq; Bs at QB5 and KKt4; Kt at Q7; Ps at QR3, KB2 and KB4. Black: K at K5; B at QB2; Ps at QKt5, Q6, K7, KKt2 and KR3.

White mates in three.

A FINE SUI-MATE.

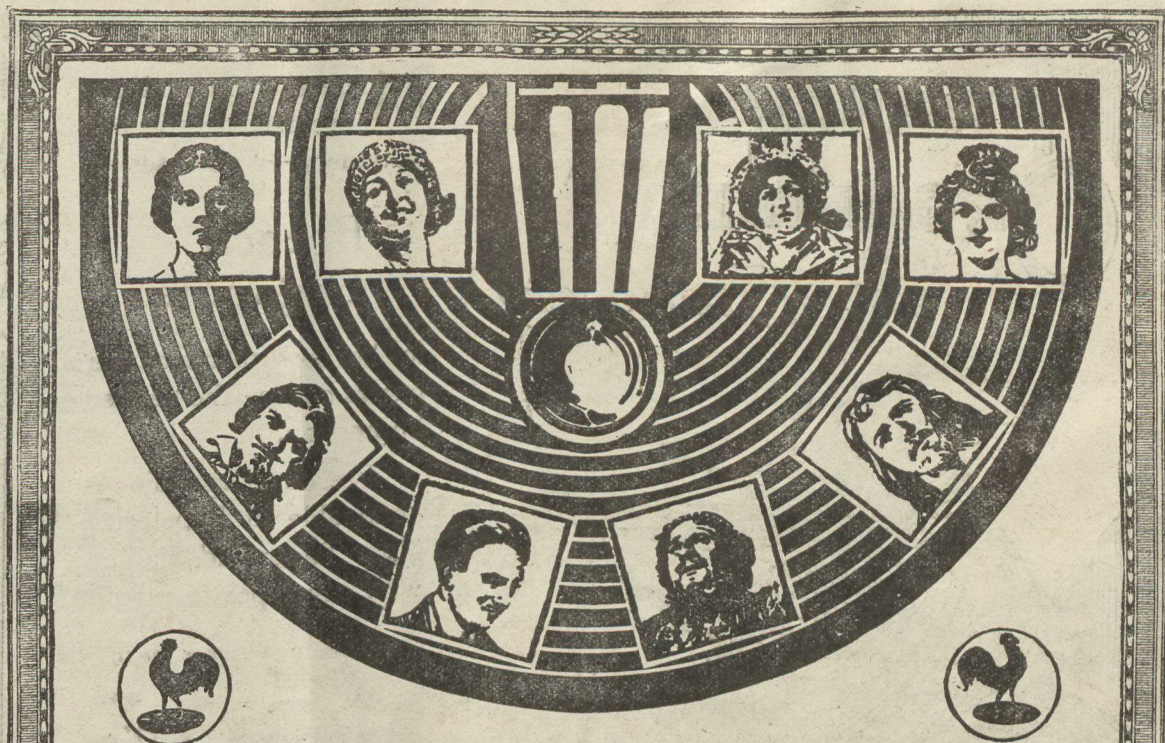
The following is a remarkable fine echo self-mate in no less than eight moves. It captured first prize in the "Sunny South" tourney, 1890-91.

By C. L. Fitch.

White: K at Q4; Q at KR2; Rs at QKt3 and QKt4; B at QR5; Kts at KB7 and KR6; Ps at QR6, QKt2 and KB5. Black: K at KB6; Kt at QB6; Ps at QR2, QKt4, KB3 and KR2. Self-mate in eight.
1. K—Q3! Kt—Q4; 2. K—Q2ch, Kt—K6; 3. R—Q4; 4. R (Kt3)—Q3; 5. Kt—Kt5ch; 6. K—Ksq; 7. B—Q2; 8. Q—B2ch, PxQ, mate. If 2... Kt—B6, then 3. K—B3; 4. Kt—K5; 5. Q—Kt2, P—K5; 6. B—B7; 7. Q—KB2; 8. Q—Q2ch, PxQ, mate. Black's moves, where omitted are all forced.

SOLUTIONS.

Problem No. 186, by J. J. de Rietveld.
1. Kt—Q2! BxKt; 2. RxB, any; 3. QxP, mate.



Famous Artists on Pathe' Records

THERE are very few of the world's celebrated artists who, at one time or another in their career have not made a little journey to the recording laboratories of Pathe' Freres Phonograph Co. to lay their offerings of song and music in the lap a far of wider public than they can reach on opera and concert stages.

Among the present day celebrities who have made records for Pathe'—most of them exclusively—are:

Lucien Muratore
Claudia Muzio
Adamo Didur
Kathleen Howard
Edmond Clement
Jacques Thibaud
Rudolf Ganz
Lina Cavalieri
Paul Althouse
Eleanora de Cisneros
Margarethe Ober
Leo Slezak
A. Giorgini
Anna Fitziu
David Bispham
and many others.

During the 20 odd years of its existence the Pathe' Company has been distinguished more than any other talking machine concern by the number of famous musicians who have selected them to perpetuate for all time their art and genius. Great artists have found that only with the exclusive and secret Pathe' method of recording can the full, rich, natural, vibrant tones of the human voice be reproduced.

Pathe' Records

In addition to the voluminous American catalogue, Pathe' has an enormous repertoire of European selections, made by artists of the front rank who have never appeared here.

If you are interested in the unusual in music, write for this special catalogue. It will be sent free upon request.

THE PATHE FRERES PHONOGRAPH CO. OF CANADA, Limited
4-6-8 Clifford Street - TORONTO, Ont.
Montreal Office: 1004 New Birks Bldg.

14

**Canadian
Government
Railways**

NEARING THE MILLION MARK

**Canadian
Government
Railways**

**OVER
700,000
SOLDIER LADS
HAVE TRAVELLED THIS
ROUTE WITHOUT A HISSAP**

THROUGH EXPRESS TRAINS

WINNIPEG	TORONTO
WINNIPEG	QUEBEC
MONTREAL	HALIFAX
HALIFAX	SYDNEY
HALIFAX	ST JOHN

H.H. MELANSON, PASSENGER TRAFFIC MGR. MONCTON, N.B.