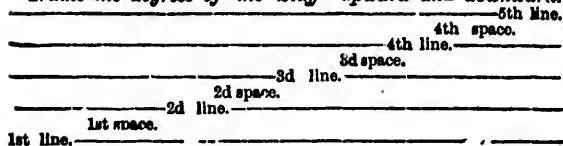


*Name the degrees of the Staff—upward and downward.*



*How are the letters applied to the Staff?*

By a Clef or Key, placed at the beginning.

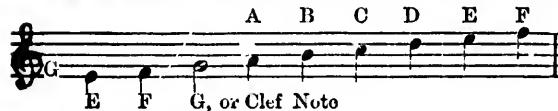
*What Clefs are in general use?*

The Treble, or G Clef, and the Bass, or F Clef.

*On what line is the Treble Clef placed?*

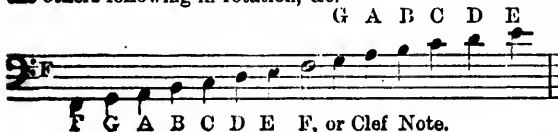
On the 2d line, thus giving the letter G to that line, the others following in rotation above and below.

*Name the letters on the Staff, commencing with the Clef note.*



*On what line is the Bass Clef placed?*

On the fourth line, thus giving the letter F to that line, the others following in rotation, &c.



*Where are higher or lower notes written?*

On added lines, and in the spaces between them, placed above and below the Staff.

*Name the degrees thus produced above the Staff.*



*Name the degrees thus produced below the Staff.*



These Scales should be thoroughly committed to memory, so that they can be repeated with equal facility, ascending, or descending, taking care always to name the line or space before naming the letter.