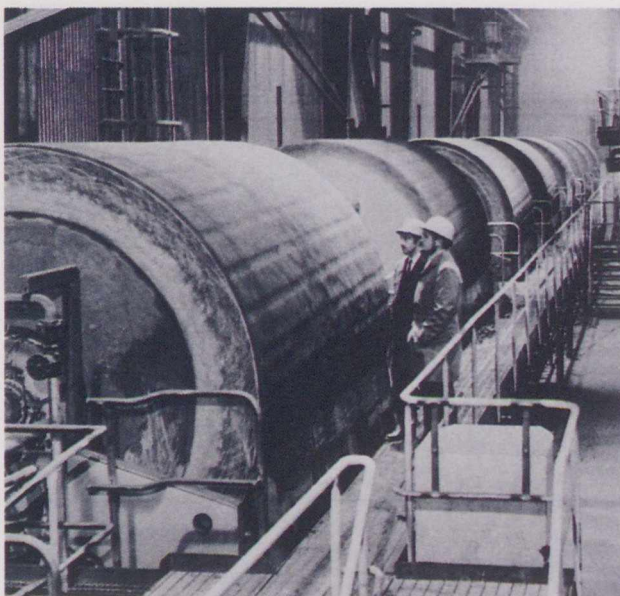


CAPABILITY GUIDE



Sala Machine Works Ltd.

3136 Mavis Road,
Mississauga,
Ontario
L5C 1T8

For information:
Telephone: (416) 270-2170
Telex: 06-961182 SALAMACH CKVL
Facsimile: (416) 270-9996

The Sala organization designs and manufactures heavy duty equipment for mineral processing, pulp and paper and other process industries. For the pulp and paper industry Sala provides equipment for effluent treatment including mechanical bar screens, peripheral drive clarifiers, sludge thickeners, vacuum filters and other dewatering equipment, high-speed surface aerators and pumps. The line of centrifugal pumps includes vertical sump pumps with cantilevered shaft, submersible pumps, horizontal pumps and vertical slurry pumps with integral tank. The various pumps are available with channel or vortex impellers to suit different operating conditions and in a number of different corrosion and abrasion-resistant materials. Sala also manufactures high-gradient magnetic filters for steam condensate polishing.



Sandwell Swan Wooster Inc.

700- 1190 Hornby St.
Vancouver
British Columbia
V6Z 2H6

For information:
Telephone: (604) 684-9311
Telex: 04-51275 SWANCO VCR
Facsimile: (604) 688-5913

Sandwell Swan Wooster Inc., founded in 1986, combines the experience and resources of Sandwell and Co. Ltd. and Swan Wooster Engineering Co. Ltd., two Canadian-based consulting engineering firms, resulting in the formation of one of the largest and strongest engineering companies in Canada. The combined organization provides professional services to governments and private sector clients in the fields of pulp and paper and other areas. Sandwell Swan Wooster's services range from the preparation of prefeasibility studies to management of major project developments including planning, economic and financial analysis, detailed design, procurement, quality control, construction, commissioning, operations and training.