

ATLAS ASSURANCE CO'Y, OF LONDON, ENGLAND.

FOUNDED - - - 1808.

CAPITAL, - - - £1,200,000 Stg.

JOINT MANAGERS:

OWEN MURPHY, M.P.P. LOUIS H. BOULT.
Montreal.

WOOD & MACDONALD,
Agents for Toronto, - 92 King Street East
Agents required in unrepresented towns

NATIONAL ASSURANCE CO'Y OF IRELAND.

Incorporated - - - 1822.

CAPITAL, - - - £1,000,000 Stg.

CHIEF AGENTS:

OWEN MURPHY, M.P.P. LOUIS H. BOULT.
Montreal.

WOOD & MACDONALD,
Agents for Toronto, - 92 King Street East.
Agents required in unrepresented towns.

ELIAS ROGERS & CO.

BEST
Quality
COAL
&
WOOD.
—
LOWEST
PRICES.



TELEPHONE
Com-
muni-
cation
with all
Offices.

J. R. WALKER,

15 COMMON ST., MONTREAL,
IMPORTER AND DEALER IN

Cotton & Woollen Rags, Paper Stock

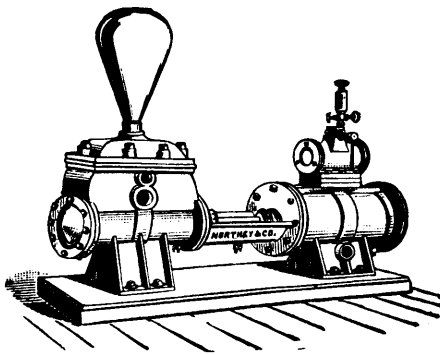
AND SCRAP METALS.

Cash buyers of Peddlers' Rags, Tailors' Clippings, Old Rubber, &c.

TORONTO BRANCH: OTTAWA BRANCH:
Toronto Mill Stock & Alexander Dackus,
Metal Co., 257 Cumberland St.,
Esplanade St., Toronto. Ottawa, Ont.

SINGLE & DUPLEX

—Steam & Power Pumps



For Boiler feeding, Fire Protection, Water Supply, Mining Use, etc.

All our Pumps are of the latest and best design, the result of long and valuable experience in the Canadian pump trade.

Independent Air Pump Condensers | For prices and particulars - write for Catalogue -

NORTHEY & CO., TORONTO, ONT.
Office & Works:
COR. FRONT & PARLIAMENT STS.

ETNA LIFE INSURANCE COMPANY,

OF HARTFORD, CONN.

THIRTY-NINTH ANNUAL REPORT,

JANUARY 1, 1889.

ASSETS, January 1st, 1888, at Cost

\$31,234,520 72

Premiums in 1888

RÉCEIPTS.

Interest, and from other sources in 1888

\$3,204,964 16
1,730,120 97
5,135,085 13

DISBURSEMENTS.

Death Claims

Matured Endowments

Dividends to Policy-holders and for Surrendered Policies

Commissions

Agency Expenses, Medical Examinations, and other expenses

Dividends on Stock, earned in Stock Department

Taxes, \$90,989.15; Re-insurance, \$1,207.80

\$1,509,984 71
778,161 59
893,120 99
401,884 69
245,088 38
123,000 00
92,187 95
4,045,408 26
\$32,324,197 69

Assets, December 31st, 1888, at cost

ASSETS.

Real Estate

Office Building

Cash on hand and in banks

United States Bonds

Railroad and other Stocks and Bonds

Bank Stocks

State, County, City, and Town Bonds

Mortgages secured by Real Estate valued at over \$58,500,000 00

Loans on Collaterals (market value \$759,165.00)

Loans on Personal Security

Loans on existing Policies, valued at over \$5,000,000.00

Balances due from Agents

\$ 832,404 70
250,000 00
3,737,601 66
975,875 00
798,058 13
1,000,074 04
72 2,403 74
15,723,590 77
540,788 31
2,901 23
1,747,978 09
2,445 92

Assets, December 31st, at cost price

Interest due and accrued, December 31, 1888

Premiums in course of collection

Quarterly and semi-annual Premiums

Market value of securities over cost

\$ 531,606 94
93,891 37
189,947 85
679,391 22
\$32,324,197 69
1,494,837 59
\$33,819,034 97

Gross Assets, January 1, 1889

LIABILITIES.

Losses and Claims awaiting further proof, and not yet due

Dividends to Policy-holders, not due

Premiums paid in advance

Reserve for Re-insurance on existing Premiums

All other Liabilities

\$ 252,020 00
150,762 88
6,221 95
27,773 285 90
70,678 00
\$28,232,979 73

SU PLUS AS REGARDS POLICY-HOLDERS.

By Conn., Mass., and New York Standard

By Standard of many other States and Canada

\$5,566,055 24
7,325,000 00

Policies in force January 1, 1889, 67,749, insuring

Policies issued in 1888, 8,083, insuring

\$101,904,303 44
16,094,587 00

MORGAN G. BULKELEY, President.

J. C. WEBSTER, Vice-President.

J. L. ENGLISH, Secretary.

H. W. ST. JOHN, Actuary.

W. H. ORR & SONS, Managers, Toronto.

STANDARD CHOPPING MILLS.

USES BEST FRENCH BURR

MILLSTONES

FINEST CRINDER IN THE

WORLD NO RENEWING

PLATES AS IN IRON MILLS

STONES WILL
LAST A
LIFE TIME

SPEED 500

WATEROUS

ENGINE WORK

BRANTFORD

CANADA

20

INCH

STANDARD

CHOPPER

WATEROUS

E. W. CO.

BRANTFORD, CANADA.

20

INCH

STANDARD

CHOPPER

WATEROUS

E. W. CO.

BRANTFORD, CANADA.

20

INCH

STANDARD

CHOPPER

WATEROUS

E. W. CO.

BRANTFORD, CANADA.

20

INCH

STANDARD

CHOPPER

WATEROUS

E. W. CO.

BRANTFORD, CANADA.

20

INCH

STANDARD

CHOPPER

WATEROUS

E. W. CO.

BRANTFORD, CANADA.

20

INCH

STANDARD

CHOPPER

WATEROUS

E. W. CO.

BRANTFORD, CANADA.

20

INCH

STANDARD

CHOPPER

WATEROUS

E. W. CO.

BRANTFORD, CANADA.

20

INCH

STANDARD

CHOPPER

WATEROUS

E. W. CO.

BRANTFORD, CANADA.

20

INCH

STANDARD

CHOPPER

WATEROUS

E. W. CO.

BRANTFORD, CANADA.

20

INCH

STANDARD

CHOPPER

WATEROUS

E. W. CO.

BRANTFORD, CANADA.

20

INCH

STANDARD

CHOPPER

WATEROUS

E. W. CO.

BRANTFORD, CANADA.

20

INCH

STANDARD

CHOPPER

WATEROUS

E. W. CO.

BRANTFORD, CANADA.

20

INCH

STANDARD

CHOPPER

WATEROUS

E. W. CO.

BRANTFORD, CANADA.

20

INCH

STANDARD

CHOPPER

WATEROUS

E. W. CO.

BRANTFORD, CANADA.

20

INCH

STANDARD

CHOPPER

WATEROUS

E. W. CO.

BRANTFORD, CANADA.

20

INCH

STANDARD

CHOPPER

WATEROUS

E. W. CO.

BRANTFORD, CANADA.

20

INCH

STANDARD

CHOPPER

WATEROUS

E. W. CO.

BRANTFORD, CANADA.

20

INCH

STANDARD

CHOPPER

WATEROUS

E. W. CO.

BRANTFORD, CANADA.

20

INCH

STANDARD

CHOPPER

WATEROUS

E. W. CO.

BRANTFORD, CANADA.

20

INCH

STANDARD

CHOPPER

WATEROUS

E. W. CO.

BRANTFORD, CANADA.

20

INCH

STANDARD

CHOPPER

WATEROUS

E. W. CO.

BRANTFORD, CANADA.

20

INCH

STANDARD

CHOPPER

WATEROUS

E. W. CO.

BRANTFORD, CANADA.

20

INCH

STANDARD

CHOPPER

WATEROUS

E. W. CO.

BRANTFORD, CANADA.

20

INCH

STANDARD

CHOPPER

WATEROUS

E. W. CO.

BRANTFORD, CANADA.

20

INCH

STANDARD

CHOPPER

WATEROUS

E. W. CO.

BRANTFORD, CANADA.

20

INCH

STANDARD

CHOPPER

WATEROUS

E. W. CO.

BRANTFORD, CANADA.

20

INCH

STANDARD

CHOPPER

WATEROUS

E. W. CO.

BRANTFORD, CANADA.

20

INCH

STANDARD

CHOPPER

WATEROUS

E. W. CO.

BRANTFORD, CANADA.

20

INCH

STANDARD

CHOPPER

WATEROUS

E. W. CO.

BRANTFORD, CANADA.

20

INCH

STANDARD

CHOPPER

WATEROUS

E. W. CO.

BRANTFORD, CANADA.

20

INCH

STANDARD

CHOPPER

WATEROUS

E. W. CO.

BRANTFORD, CANADA.