

dwelling, Fourth Avenue, cost \$1,200; the Russell House Company, alterations to hotel building for a cafe, cost \$5,000; David MacLaren, solid brick addition to house and stable, Frank street, cost \$2,000.

MONTREAL, QUE.—The C. P. R. will it is said, invite tenders this week for the construction of four car shops and some portions of the extensive works to be built by the company at Hochelaga. —Protestant School Commissioners of Verdun will at once invite tenders for the construction of a new school building, from plans prepared by Mr. James Wright. —There is a division of opinion among the aldermen with regard to accepting the offer of \$150,000 from Mr. Cunegie towards the erection of a library building. —The city declines to take the initiative in the construction of a tunnel under the C. P. R. tracks at Forsyth street, lest it should be held liable for the cost. —The council have received forty applications for permanent sidewalks representing an expenditure of \$27,000—Ald. Chausse has been instructed to invite tenders for repairs to the east end cattle yard. —An agreement has been approved between the Harbor Board and Grand Trunk Railway whereby the railway will erect an elevator at Windmill Point. —Work has been commenced on the construction of the Montreal Terminal Co's railway line. —Building permits have been granted as follows. —Edwin Hanson, alterations to one-storey house, cost \$10,000. (Architects, Hutchison & Wood, contractor, John Allan, J. Marchand, alteration to one-storey house, Rivet Lane, (Architect H. Bergeron); E. Major, five-storey house, store, warehouse, St. Catharine (Continued on page 6.)

JOSSON CEMENT .. Manufactured at. NIEL ON RUPELL

Is the Highest Grade Artificial Portland Cement and the Best for High Class Work Has been used largely for Government and Municipal Works. TO BE HAD FROM ALL CANADIAN DEALERS

C. I. de Sola, Manager in Canada 180 St. James Street, MONTREAL

SMITH
CONICAL
CONCRETE
MIXER



- 11 -

Different Sizes and Styles.

Mixes in Batches. Discharges by Tilting while Running. Mounted on Skids or Trucks.
Catalogue on Application.

— SOLE CANADIAN AGENTS —

W. H. C. Mussen & Co., 763 Craig St., MONTREAL

CANADIAN CONTRACTORS' HAND-BOOK

and Estimator.

Third Edition

Price \$1.50; to subscribers of the Canadian Architect and Builder, \$1.00.

SEND FOR A COPY

C. E. Mortimer Publishing Co. Toronto.

DEBENTURES

Municipalities contemplating the issue of Debentures will find it to their advantage to communicate with

G. A. STIMSON & CO.
Investment Dealers

24 and 26 King St. W. TORONTO

THE CRESCENT CONCRETE PAVING CO.

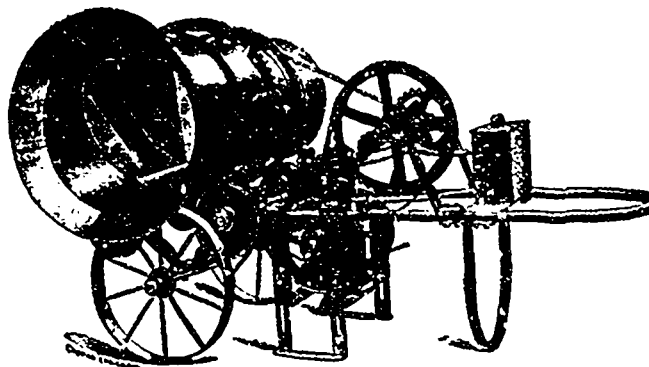
Contractors for all branches of

CONCRETE WORK

77 Victoria Street, TORONTO

Yards: 133-135 Wellington St. West.
Phone Main 1649.

McKelvey Concrete Machinery Co. CHICAGO



Manufacturers of the **McKelvey Concrete Mixers.**

Steam, hand and gasoline power.

Mixes continuously—no delays by mixing in batches.

W. A. McKelvey,
Manager Canadian Branch,
207 McKinnon Bldg., Toronto

The Canadian Bridge Co., Limited

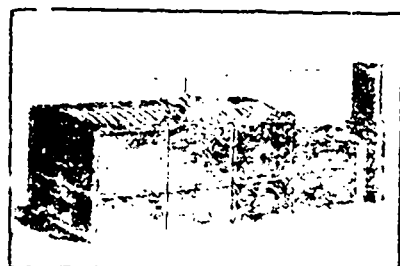
WALKERVILLE, ONT.

MANUFACTURERS OF

RAILWAY AND HIGHWAY BRIDGES

Locomotive Turn Tables,
Roofs, Steel Buildings and
Structural Iron Work of all descriptions.

PERFECTION STEEL-GLAD AND BRICK SET INCINERATORS



MANUFACTURED BY **Toronto Furnance & Crematory Co., LIMITED**
14 and 16 Queen St. East, TORONTO, CANADA.

Experts in sanitary disposal of dangerous wastes,

Garbage, Refuse, Night Soil, Dead Animals,

For Cities, Towns, Hospitals, Hotels, Abattoirs, etc.

The plants embody the newest features of modern practice and are constructed to meet the requirements of the smallest towns and the largest cities, capacities ranging from 4 to 100 tons daily. Correspondence invited.