

NEW OR LITTLE KNOWN SPECIES OF APHIDIDÆ.

BY JOHN J. DAVIS, BUREAU OF ENTOMOLOGY, WASHINGTON, D.C.

Macrosiphum creelii, n. sp.*Wingless viviparous female.* (Fig. 10.—Plate II, figs. 1, 2.)

Entire body pea green, excepting the head, which is a whitish green, and a narrow darker green median longitudinal line on dorsum of abdomen. Segments I and II of antenna concolorous with body; segments III, IV and basal half of V brownish, with darker

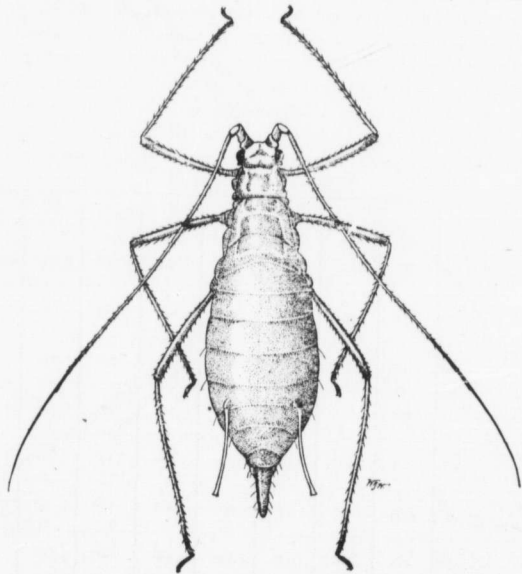


Fig. 10.

tips and the distal half of V and all of VI black; filament of segment VI longest, reaching to or a little beyond tip of body; segment III with 3 to 5 circular sensoria in a row at base, and segments V and base of VI with the usual distal ones. Eyes blood red. Beak barely reaching coxæ of second pair of legs. Legs with femora

February, 1914