

The Canadian Entomologist.

VOL. XIII.

LONDON, ONT., MARCH, 1887.

No. 3

ENTOMOLOGY FOR BEGINNERS.

THE SATELLITE SPHINX—*Philampelus satellitia* Linn.

BY THE EDITOR.

This is one of the most beautiful of our Sphinx moths, a rare as well as lovely creature, and an object highly prized by collectors. It is found throughout the northern United States and occasionally in Canada, but is no where very common.

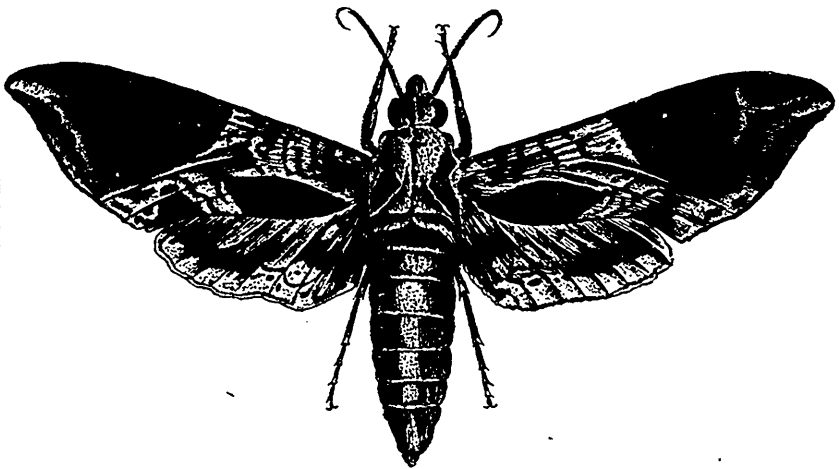


Fig. 4.

The moth (fig. 4), when its wings are expanded, will measure from four to four and a half inches across. Its color is of a light olive mixed with gray and varied with patches of a darker olive green, rich and velvety, and some portions with a rosy hue. The moths appear in July, when after pairing, the female deposits her eggs singly on the leaves of the grape-vine or Virginia creeper (*Ampelopsis quinquefolia*), where they shortly hatch into small green larvæ of a pinkish hue along the back and with a very long pink horn at the tail. As the caterpillar increases in size the tail becomes shorter, and after a while curves round as shown at