

ALLIS-CHALMERS CO.

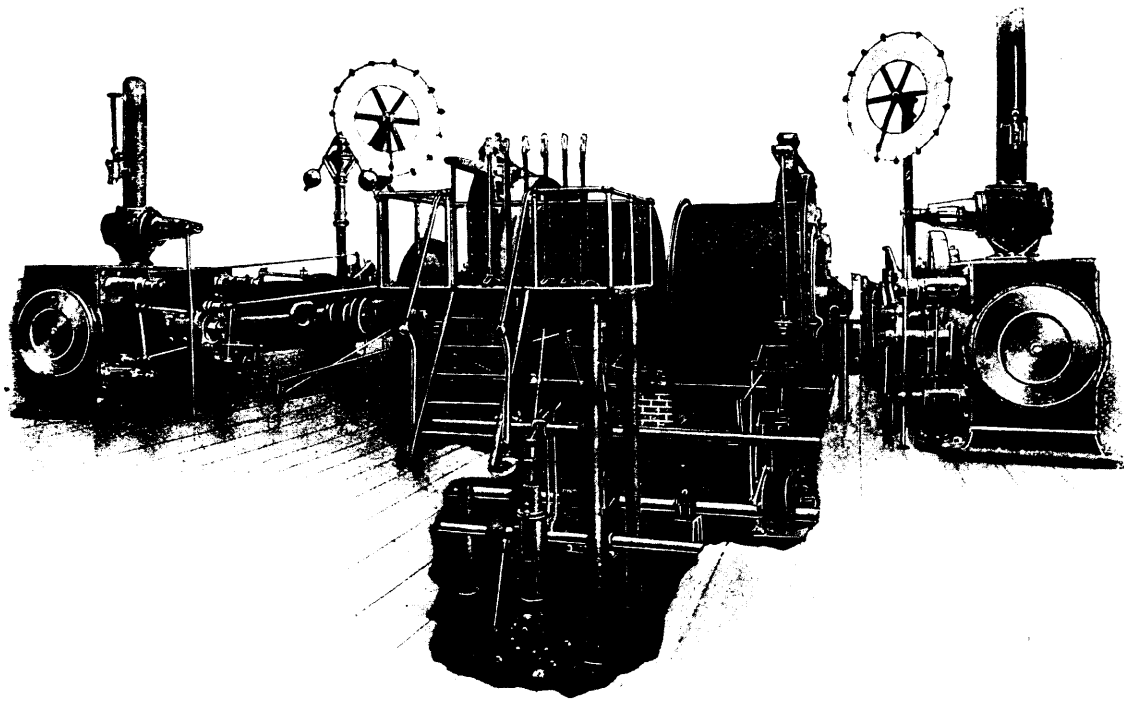
SUCCESSOR TO

THE EDWARD P. ALLIS CO. FRASER & CHALMERS. GATES IRON WORKS. DICKSON MFG. CO.
Milwaukee, Wis. Chicago, Ill. Chicago, Ill. Scranton, Pa.

BUILDERS OF

HOISTING ENGINES

(STANDARD AND SPECIAL DESIGN)



Description of Hoisting Engine built for the Le Roi Mining Company

This engine embodies the latest principles in hoisting engine construction, and consists of two 24 inch by 60 inch Corliss engines with two drums 10 ft. diameter by 5 ft. face mounted directly on the crank shaft. Each drum is equipped with a powerful band friction clutch and a powerful post brake operated by steam. The engine is provided with special valve gear for hoisting engine work, and is controlled by link reversing gear operated by an auxiliary engine. It is furnished with all devices for proper handling and safety. Maximum capacity 14,500 lbs. unbalanced load raised at 2,000 ft. per minute with 100 lbs. steam pressure.

BRANCH OFFICES:

NEW YORK, Broad Exchange Bldg.
PITTSBURGH, 1212 Frick Bldg.
MINNEAPOLIS, 116 Corn Exchange Bldg.
DENVER, 1649 Tremont St.

GENERAL

CHICAGO,



OFFICE:

ILL., U.S.A.

HOME INSURANCE BUILDING.

BRANCH OFFICES:

SALT LAKE CITY, Dooly Block.
SPOKANE, 512 First Ave.
SAN FRANCISCO, 623 Hayward Bldg.
LONDON, ENG., 160 Dashwood House