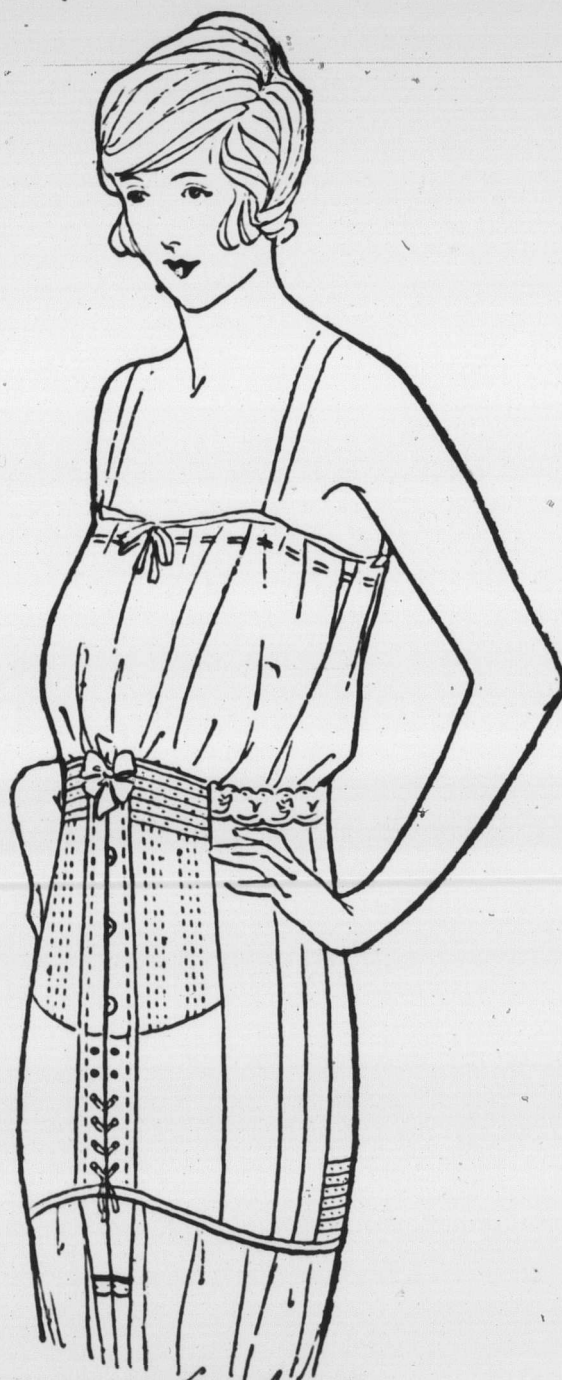


This Diafragm- Controlling Corset



NO. 530
\$5.00

Is designed to give the desired straight flat back, and controls any excess flesh that may have accumulated in front above the waistline, as it is so constructed that the flesh is not crowded over the top of the corset, but instead is covered by it. The model is made of strong pink contil, in sizes 25 to 36.

\$5.00 a pair

DRYSDALE'S CORSET SHOP

Second Floor

Gordon Drysdale
LIMITED

Store opens at 9 a.m.
and closes at 6 p.m.